



ITT

ROBOT PUMPS

Vortex pump

RW2110DA

50 Hz

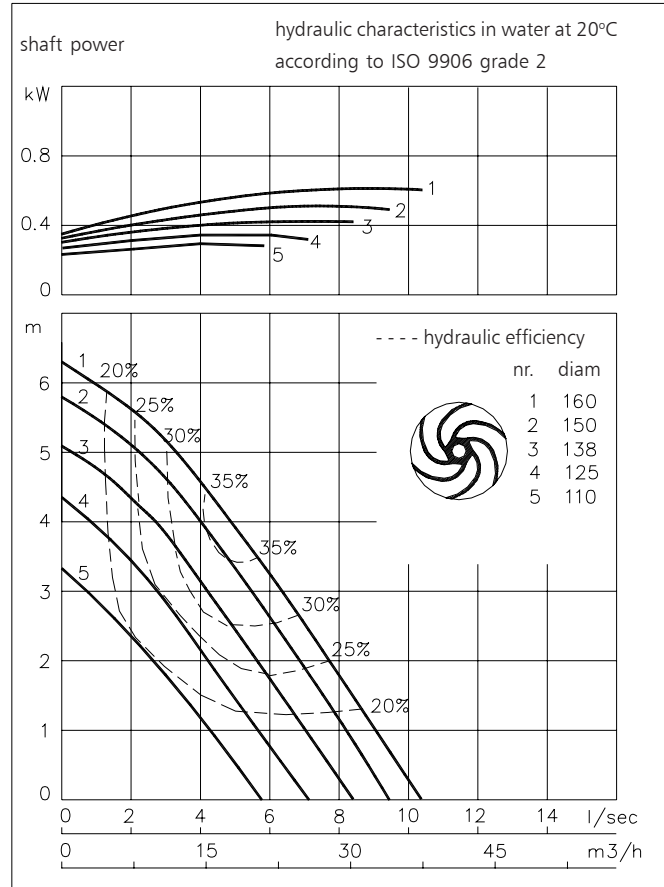
The vortex impeller pumps are designed to pump a wide variety of solids contaminated liquids in many applications. Vortex pumps are used for sewage and other waste water applications. Hydraulic components are available in special materials.

Pump

solids passage : 50 mm
 suction diameter : 50 mm
 discharge diameter : 50 mm
 impeller diameters : 160-110 mm
 recommended min. flow : 1.5 l/s (5 m³/h)

Motor

3 phase 1 phase
 rated shaft power : 0.65 kW 0.65 kW
 rated electrical power : 0.94 kW 0.95 kW
 mains : 50 Hz
 nominal speed : 1450 rpm
 rated efficiency : 69 % 68 %
 rated power factor (cos phi) : 0.79 0.97
 degree of protection : IP 68
 isolation class : H (180 °C)
 max. water temperature : 40 °C
 (higher temperatures on request)
 standard cable length : 10 m



Pump curves are for cast iron only.

Materials

motor housing	: 1
seal housing	: 1
volute	: 1 5 6
impeller	: 2 5 6 11
shaft	: 3 5
bolts	: 4 5
elastomers	: 8+9 10
electrical cable	: 9
seal lubrication	: oil
pump seal	: silicon carbide-silicon carbide
motor seal	: carbon-ceramic
primer	: Alkyd primer
top coating	: Two component high-build polyurethane coating

1	cast iron	EN-GJL-250
2	sg cast iron	EN-GJS-400-15
3	stainless steel 431	X20 CrNi 17 2
4	stainless steel 304	X5 CrNi 18 10
5	stainless steel 316	X5 CrNiMo 17 12 2
6	stainless steel 329	X4 CrNiMoN 27 5 2
7	wear resistant sg iron	HB 500
8	nitrile	(NBR)
9	neoprene	(CR)
10	viton	(FPM)
11	Nihard 4	G-X300CrNiSi 9 5 2

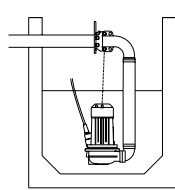
www.robotpumps.com

Engineered for life

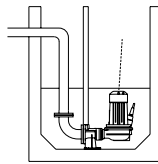


Installation options

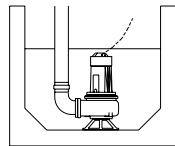
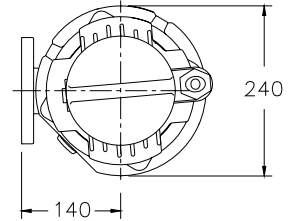
RW2110DA



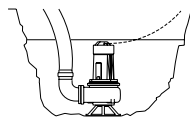
H
Header coupling:
Type HK65 or HK80



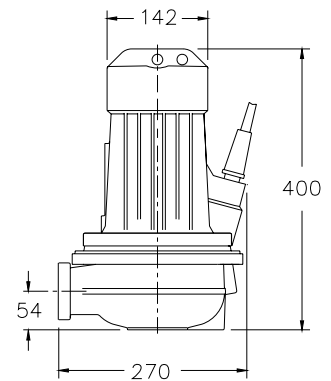
V
Guide bar coupling:
Type V50



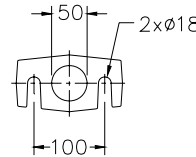
F
Freestanding:
With support and
50 or 75mm hose adapter
or G2" or 3" threaded
connection



T
Transportable:
With support and
50 or 75mm hose adapter
or G2" or 3" threaded
connection



The motor is cooled by the surrounding water.



Version

B Basic

M 1 phase motor

Standard with thermostiches

Weight

36 kg

38 kg

Optional:

Thermostiches in motorwindings

Flexible protective sheating for cable
(AISI 316)

Water detector in motor and oil housing

Motor connection details: 1 phase motor

		number of cables x number of cores x cross section [mm ²]			
voltage [V]*	rated current[A]	with thermostiches			
			condensator		
220	4.5	1x7x1.5	20 μF / 450 V		
230	4.3	1x7x1.5	20 μF / 450 V		
240	4.1	1x7x1.5	20 μF / 450 V		

starting current : 2.5 x rated current

* other voltages on request

Motor connection details 3 phase motor

		number of cables x number of cores x cross section [mm ²]			
voltage [V]*	rated current[A]			with waterdetector and/or thermostiches	
		DOL-start		DOL-start	
220	3.1	1x4x1.5		1x7x1.5	
380	1.8	1x4x1.5		1x7x1.5	
400	1.7	1x4x1.5		1x7x1.5	
415	1.7	1x4x1.5		1x7x1.5	
500	1.4	1x4x1.5		1x7x1.5	

starting current DOL-start : 3.7 x rated current

* other voltages on request

We reserve the right to alter specifications without prior notice.