



ITT

ROBOT PUMPS

Vortex pump

RW2120DA

50 Hz

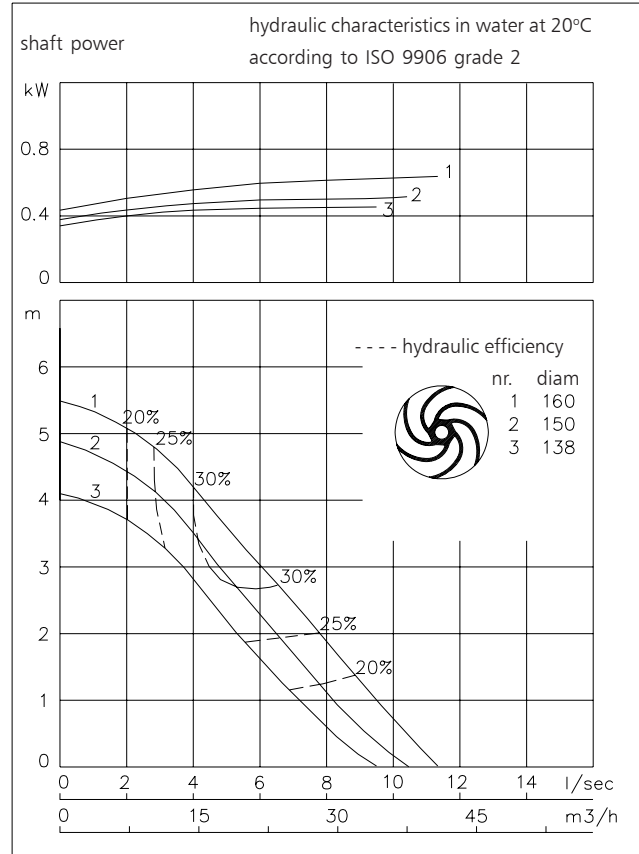
The vortex impeller pumps are designed to pump a wide variety of solids contaminated liquids in many applications. Vortex pumps are used for sewage and other waste water applications. Hydraulic components are available in special materials.

Pump

solids passage : 65 mm
 suction diameter : 65 mm
 discharge diameter : 65 mm
 impeller diameters : 160 -138 mm
 recommended min. flow : 2 l/s (8 m³/h)

Motor

	3 phase	1 phase
rated shaft power	: 0.65 kW	0.65 kW
rated electrical power	: 0.94 kW	0.95 kW
mains	: 50 Hz	50 Hz
nominal speed	: 1450 rpm	1450 rpm
rated efficiency	: 69 %	68 %
rated power factor (cos phi)	: 0.79	0.97
degree of protection	: IP 68	IP 68
isolation class	: H (180 °C)	H (180 °C)
max. water temperature	: 40 °C	40°C
(higher temperatures on request)		
standard cable length	: 10 m	10 m



Pump curves are for cast iron only.

Materials

motor housing	: 1
seal housing	: 1
volute	: 1 5 6
impeller	: 2 5 6 11
shaft	: 3 5
bolts	: 4 5
elastomers	: 8+9 10
electrical cable	: 9
seal lubrication	: oil
pump seal	: silicon carbide-silicon carbide
motor seal	: carbon-ceramic
primer	: Alkyd primer
top coating	: Two component high-build polyurethane coating

1	cast iron	EN-GJL-250
2	sg cast iron	EN-GJS-400-15
3	stainless steel 431	X20 CrNi 17 2
4	stainless steel 304	X5 CrNi 18 10
5	stainless steel 316	X5 CrNiMo 17 12 2
6	stainless steel 329	X4 CrNiMoN 27 5 2
7	wear resistant sg iron	HB 500
8	nitrile	(NBR)
9	neoprene	(CR)
10	viton	(FPM)
11	Nihard 4	G-X300CrNiSi 9 5 2

www.robotpumps.com

Engineered for life

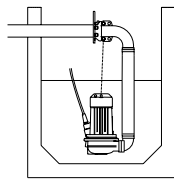


ITT

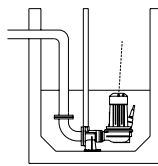
ROBOT PUMPS

Installation options

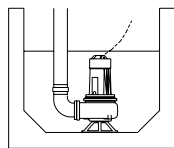
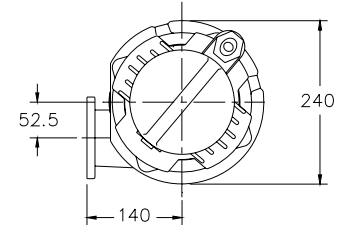
RW2120DA



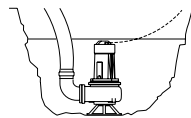
H
Header coupling:
Type HK65 or HK80



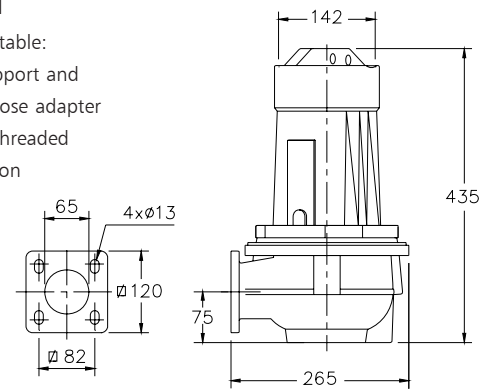
V
Guide bar coupling:
Type V65 or V80



F
Freestanding:
With support and
75mm hose adapter
or G3" threaded
connection



T
Transportable:
With support and
75mm hose adapter
or G3" threaded
connection



The motor is cooled by the surrounding water.

Version

Weight

B Basic

36 kg

M 1 phase motor

38 kg

Standard with thermostiches

Optional:

Thermostiches in motorwindings

Flexible protective sheating for cable
(AISI 316)

Water detector in motor and oil housing

Motor connection details: 1 phase motor

voltage [V]*	rated current[A]	number of cables x number of cores x cross section [mm ²]	
		with thermostiches	condensator
220	4.5	1x7x1.5	20µF / 450V
230	4.3	1x7x1.5	20µF / 450V
240	4.1	1x7x1.5	20µF / 450V

starting current : 2.5 x rated current

* other voltages on request

Motor connection details 3 phase motor

voltage [V]*	rated current[A]	number of cables x number of cores x cross section [mm ²]	
		DOL-start	with waterdetector and/or thermostiches
220	3.1	1x4x1.5	1x7x1.5
380	1.8	1x4x1.5	1x7x1.5
400	1.7	1x4x1.5	1x7x1.5
415	1.7	1x4x1.5	1x7x1.5
500	1.4	1x4x1.5	1x7x1.5

starting current DOL-start : 3.7 x rated current

* other voltages on request

We reserve the right to alter specifications without prior notice.