



Vortex pump

RW2120BB

50 Hz

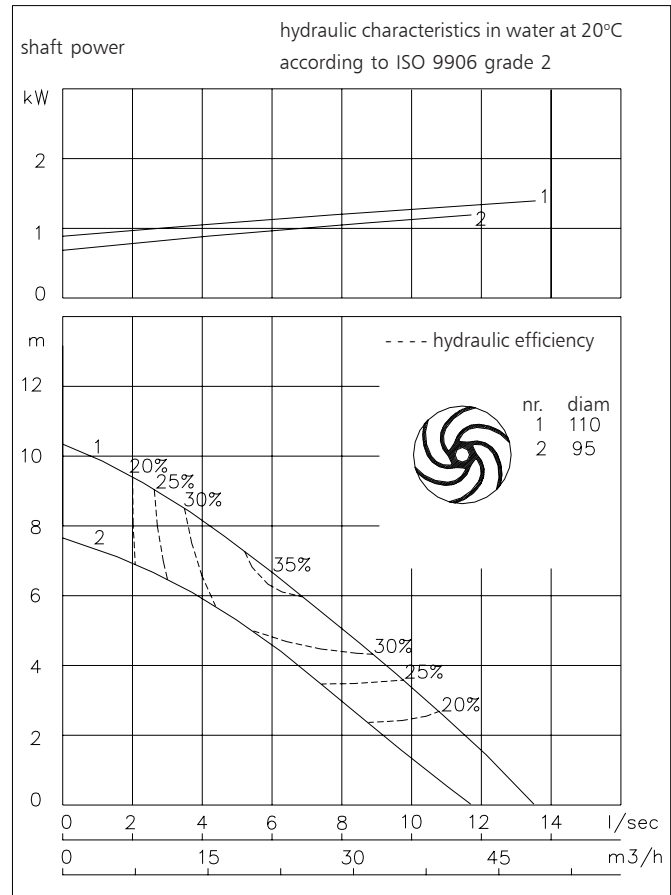
The vortex impeller pumps are designed to pump a wide variety of solids contaminated liquids in many applications. Vortex pumps are used for sewage and other waste water applications. Hydraulic components are available in special materials.

Pump

solids passage : 65 mm
 suction diameter : 65 mm
 discharge diameter : 65 mm
 impeller diameters : 110 - 95 mm
 recommended min. flow : 2 l/s (8 m³/h)

Motor

rated shaft power : 1.5 kW
 rated electrical power : 2.1 kW
 mains : 50 Hz - 3 phase
 nominal speed : 2790 rpm
 rated efficiency : 69 %
 rated power factor (cos phi) : 0.91
 degree of protection : IP 68
 isolation class : H (180 °C)
 max. water temperature : 40 °C
 (higher temperatures on request)
 standard cable length : 10 m



Pump curves are for cast iron only.

Materials

motor housing : 1
 seal housing : 1
 volute : 1 5 6
 impeller : 2 5 6 11
 shaft : 3 5
 bolts : 4 5

elastomers : 8+9 10
 electrical cable : 9
 seal lubrication : oil
 pump seal : silicon carbide-silicon carbide
 motor seal : carbon-ceramic
 primer : Alkyd primer
 top coating : Two component high-build polyurethane coating

| | | |
|----|------------------------|--------------------|
| 1 | cast iron | EN-GJL-250 |
| 2 | sg cast iron | EN-GJS-400-15 |
| 3 | stainless steel 431 | X20 CrNi 17 2 |
| 4 | stainless steel 304 | X5 CrNi 18 10 |
| 5 | stainless steel 316 | X5 CrNiMo 17 12 2 |
| 6 | stainless steel 329 | X4 CrNiMoN 27 5 2 |
| 7 | wear resistant sg iron | HB 500 |
| 8 | nitrile | (NBR) |
| 9 | neoprene | (CR) |
| 10 | viton | (FPM) |
| 11 | Nihard 4 | G-X300CrNiSi 9 5 2 |

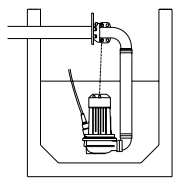


ITT

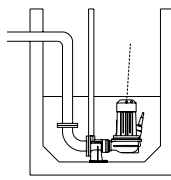
ROBOT PUMPS

Installation options

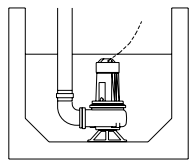
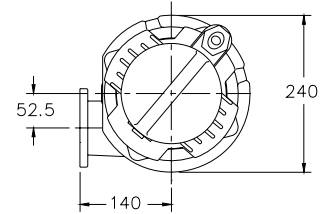
RW2120BB



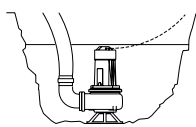
H
Header coupling:
Type HK65 or HK80



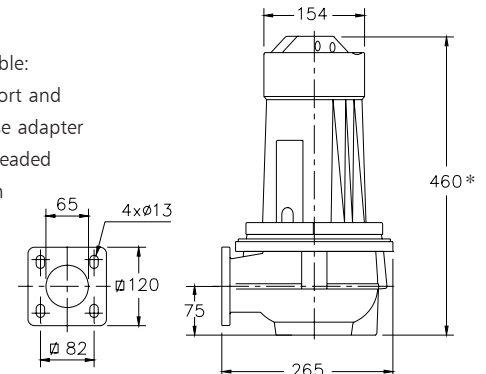
V
Guide bar coupling:
Type V65 or V80



F
Freestanding:
With support and
75mm hose adapter
or G3" threaded
connection



T
Transportable:
With support and
75mm hose adapter
or G3" threaded
connection



* version E: 560

The motor is cooled by the surrounding water.

| Version | Weight |
|---|--------|
| B Basic | 36 kg |
| E Explosion proof version Certified according to: II 2 G Ex de IIB c T4 | 49 kg |

Optional:

- Thermoswitches** in motorwindings
Standard for explosion proof version (2 sets)
- Flexible protective sheating for cable**
(AISI 316)
- Water detector** in motor and oil housing
(for explosion proof version only in oil housing with external cable)

Motor connection details

| voltage [V]* | rated current[A] | number of cables x number of cores x cross section [mm ²] | | | | | |
|-----------------|---------------------|---|--|--|--|-------------------------|--|
| | | DOL-start | | with waterdetector and/or thermoswitches | | explosion proof version | |
| 220 | 6.1 | 1x4x1.5 | | 1x7x1.5 | | 1x7x2.5 | |
| 380 | 3.5 | 1x4x1.5 | | 1x7x1.5 | | 1x7x2.5 | |
| 400 | 3.3 | 1x4x1.5 | | 1x7x1.5 | | 1x7x2.5 | |
| 415 | 3.2 | 1x4x1.5 | | 1x7x1.5 | | 1x7x2.5 | |
| 500 | 2.7 | 1x4x1.5 | | 1x7x1.5 | | 1x7x2.5 | |

starting current DOL-start : 4.8 x rated current

* other voltages on request

We reserve the right to alter specifications without prior notice.