



# ITT

## ROBOT PUMPS

### Vortex pump

### RW2130DC

### 50 Hz

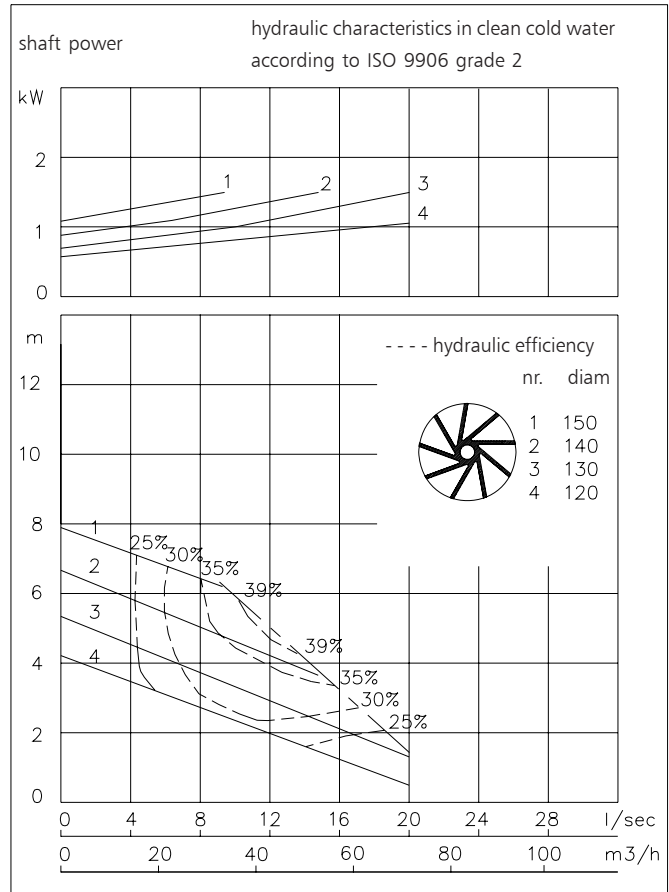
The vortex impeller pumps are designed to pump a wide variety of solids contaminated liquids in many applications. Vortex pumps are used for sewage and other waste water applications. Hydraulic components are available in special materials.

#### Pump

solids passage : 80 mm  
 suction diameter : 80 mm  
 discharge diameter : 100 mm  
 impeller diameters : 150-120 mm  
 recommended min. flow : 3.5 l/s (13 m<sup>3</sup>/h)

#### Motor

rated shaft power : 1.5 kW  
 rated electrical power : 2.1 kW  
 mains : 50 Hz - 3 phase  
 nominal speed : 1420 rpm  
 rated efficiency : 71 %  
 rated power factor (cos phi) : 0.84  
 degree of protection : IP 68  
 isolation class : H (180 °C)  
 max. water temperature : 40 °C  
 (higher temperatures on request)  
 standard cable length : 10 m



Pump curves are for cast iron only.

#### Materials

motor housing : 1  
 seal housing : 1  
 volute : 1  
 impeller : 2 5  
 shaft : 3 5  
 bolts : 4 5

elastomers : 8+9 10  
 electrical cable : 9  
 seal lubrication : oil  
 pump seal : silicon carbide-silicon carbide  
 motor seal : carbon-ceramic  
 primer : Alkyd primer  
 top coating : Two component high-build polyurethane coating

1	cast iron	EN-GJL-250
2	sg cast iron	EN-GJS-400-15
3	stainless steel 431	X20 CrNi 17 2
4	stainless steel 304	X5 CrNi 18 10
5	stainless steel 316	X5 CrNiMo 17 12 2
6	stainless steel 329	X4 CrNiMoN 27 5 2
7	wear resistant sg iron	HB 500
8	nitrile	(NBR)
9	neoprene	(CR)
10	viton	(FPM)
11	Nihard 4	G-X300CrNiSi 9 5 2

[www.robotpumps.com](http://www.robotpumps.com)

*Engineered for life*

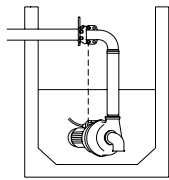


# ITT

## ROBOT PUMPS

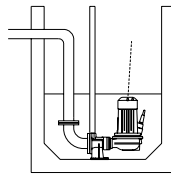
### Installation options

### RW2130DC



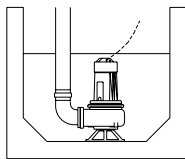
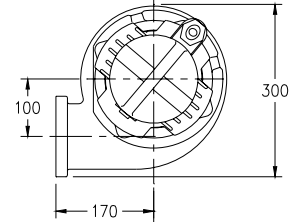
**H**

Header coupling:  
Type HK100 or HK80



**V**

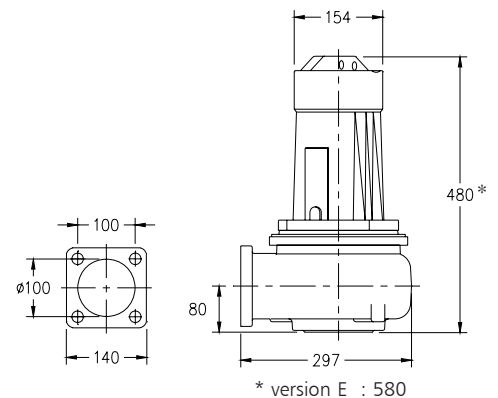
Guide bar coupling:  
Type V100



**F**

Freestanding:  
With support and  
100mm or 75mm hose  
adapter

The motor is cooled by the surrounding water.



Version	Weight
<b>B Basic</b>	43 kg
<b>E Explosion proof version</b> Certified according to: II 2 G Ex de IIB c T4	55 kg

**Optional:**

- Thermoswitches** in motorwindings  
Standard for explosion proof version (2 sets)
- Flexible protective sheathing for cable**  
(AISI 316)
- Water detector in motor and oil housing** (for explosion proof version only in oil housing with external cable)

### Motor connection details

voltage [V]*	rated current[A]	number of cables x number of cores x cross section [mm <sup>2</sup> ]					
		DOL-start		with waterdetector and/or thermoswitches		explosion proof version	
220	6.6	1x4x1.5		1x7x1.5		1x7x2.5	
380	3.8	1x4x1.5		1x7x1.5		1x7x2.5	
400	3.6	1x4x1.5		1x7x1.5		1x7x2.5	
415	3.5	1x4x1.5		1x7x1.5		1x7x2.5	
500	2.9	1x4x1.5		1x7x1.5		1x7x2.5	

starting current DOL-start : 4.8 x rated current

\* other voltages on request

We reserve the right to alter specifications without prior notice.