



# ITT

## ROBOT PUMPS

### Vortex pump

### RW2130DD

### 50 Hz

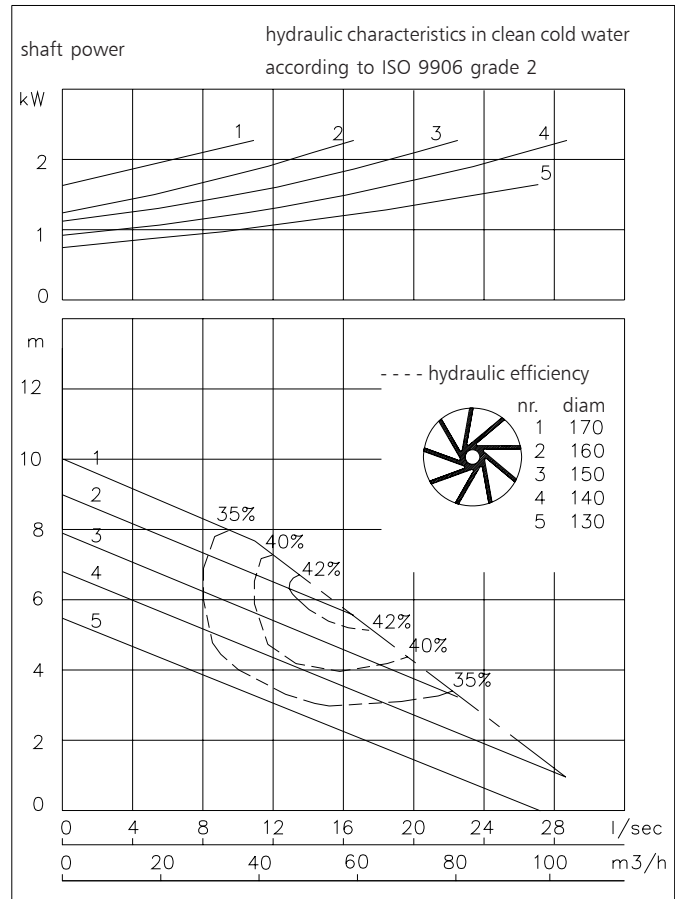
The vortex impeller pumps are designed to pump a wide variety of solids contaminated liquids in many applications. Vortex pumps are used for sewage and other waste water applications. Hydraulic components are available in special materials.

#### Pump

solids passage : 80 mm  
 suction diameter : 80 mm  
 discharge diameter : 100 mm  
 impeller diameters : 170-130 mm  
 recommended min. flow : 3.5 l/s (13 m<sup>3</sup>/h)

#### Motor

rated shaft power : 2.2 kW  
 rated electrical power : 3.0 kW  
 mains : 50 Hz - 3 phase  
 nominal speed : 1375 rpm  
 rated efficiency : 71 %  
 rated power factor (cos phi) : 0.89  
 degree of protection : IP 68  
 isolation class : H (180 °C)  
 max. water temperature : 40 °C  
 (higher temperatures on request)  
 standard cable length : 10 m



Pump curves are for cast iron only.

#### Materials

motor housing	: 1
seal housing	: 1
volute	: 1
impeller	: 2 5
shaft	: 3 5
bolts	: 4 5
elastomers	: 8+9 10
electrical cable	: 9
seal lubrication	: oil
pump seal	: silicon carbide-silicon carbide
motor seal	: carbon-ceramic
primer	: Alkyd primer
top coating	: Two component high-build polyurethane coating

1	cast iron	EN-GJL-250
2	sg cast iron	EN-GJS-400-15
3	stainless steel 431	X20 CrNi 17 2
4	stainless steel 304	X5 CrNi 18 10
5	stainless steel 316	X5 CrNiMo 17 12 2
6	stainless steel 329	X4 CrNiMoN 27 5 2
7	wear resistant sg iron	HB 500
8	nitrile	(NBR)
9	neoprene	(CR)
10	viton	(FPM)
11	Nihard 4	G-X300CrNiSi 9 5 2

[www.robotpumps.com](http://www.robotpumps.com)

*Engineered for life*

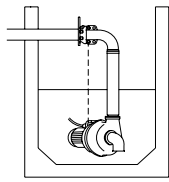


# ITT

## ROBOT PUMPS

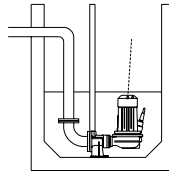
### Installation options

### RW2130DD



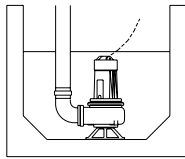
**H**

Header coupling:  
Type HK100 or HK80



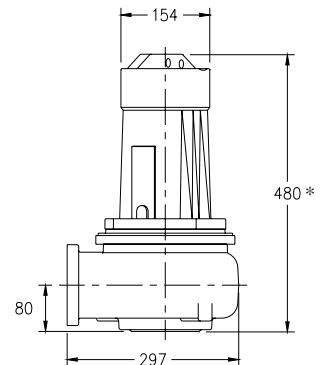
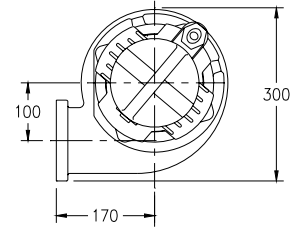
**V**

Guide bar coupling:  
Type V100



**F**

Freestanding:  
With support and  
100mm or 75mm hose  
adapter



\* version E : 580

The motor is cooled by the surrounding water.

Version	Weight
<b>B Basic</b>	52 kg
<b>E Explosion proof version</b> Certified according to: II 2 G Ex de IIB c T4	64 kg

**Optional:**

- Thermoswitches** in motorwindings  
Standard for explosion proof version (2 sets)
- Flexible protective sheathing for cable**  
(AISI 316)
- Water detector in motor and oil housing** (for explosion proof version only in oil housing with external cable)

### Motor connection details

voltage [V]*	rated current[A]	number of cables x number of cores x cross section [mm <sup>2</sup> ]					
				with waterdetector and/or thermoswitches		explosion proof version	
		DOL-start	YD-start	DOL-start	YD-start	DOL-start	YD-start
220	9.1	1x4x1.5	1x7x1.5	1x7x1.5	1x10x1.5	1x7x2.5	-
380	5.3	1x4x1.5	1x7x1.5	1x7x1.5	1x10x1.5	1x7x2.5	-
400	5.0	1x4x1.5	1x7x1.5	1x7x1.5	1x10x1.5	1x7x2.5	-
415	4.8	1x4x1.5	1x7x1.5	1x7x1.5	1x10x1.5	1x7x2.5	-
500	4.0	1x4x1.5	1x7x1.5	1x7x1.5	1x10x1.5	1x7x2.5	-

starting current DOL-start : 3.4x rated current  
starting current YD-start : 1.1x rated current

\* other voltages on request

We reserve the right to alter specifications without prior notice.