



# ITT

## ROBOT PUMPS

### Vortex Pump

### RW2112DC

60 c/s

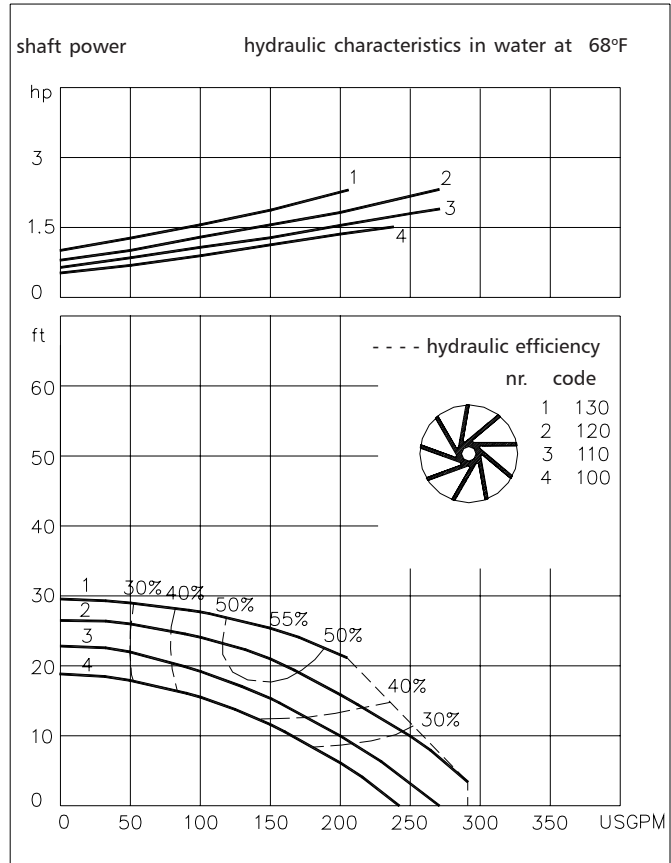
The vortex impeller pumps are designed to pump a wide variety of solids contaminated liquids in many applications. Vortex pumps are used for sewage and other waste water applications. Hydraulic components are available in special materials.

#### Pump

solids passage : 2"  
 suction diameter : 2 1/2"  
 discharge diameter : 2 1/2"  
 impeller code : 130-100  
 recommended minimum flow : 32 USGPM

#### Motor

rated horse power : 2.3 hp  
 rated electrical power : 2.4 kW  
 rated kVA : 2.8 kVA  
 mains : 60 c/s  
 speed : 1750 rpm  
 rated efficiency : 71 %  
 rated power factor (cos phi) : 0.85  
 degree of protection : IP 68  
 isolation class : F (311 °F)  
 max. water temperature : 104 °F  
 (higher temperatures on request)  
 standard cable length : 33 ft  
 max. submersion depth : 66 ft



Pump curves are for cast iron only.

15.9 USGPM = 1 l/s    1 hp = 0.746 kW    1 ft = 0.3 m    1 lb = 0.45 kg

#### Materials

motor housing : 1  
 seal housing : 1  
 volute : 1 5  
 impeller : 2 5 6  
 shaft : 3 5  
 bolts : 4 5

elastomers : 8+9 10  
 electrical cable : 9  
 seal lubrication : oil  
 pump seal : silicon carbide-silicon carbide  
 motor seal : carbon-ceramic  
 primer : Alkyd primer  
 top coating : Two component high-build polyurethane coating

1	cast iron	ASTM A-48 Cl.35
2	sg cast iron	ASTM A445 Gr.60-46-18
3	stainless steel	AISI 431
4	stainless steel	AISI 304
5	stainless steel	AISI 316
6	stainless steel	AISI 329
7	wear resistant sg iron	HB500
8	nitrile	(NBR)
9	neoprene	(CR)
10	viton	(FPM)

www.ittwwwalphen.com

*Engineered for life*

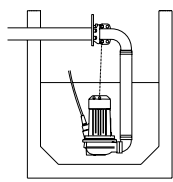


# ITT

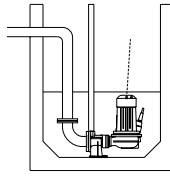
## ROBOT PUMPS

### Installation options

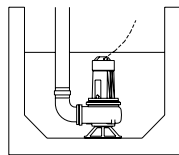
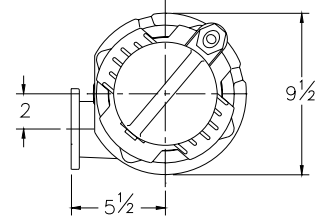
### RW2112DC



**H**  
Header coupling:  
Type HK65 or HK80

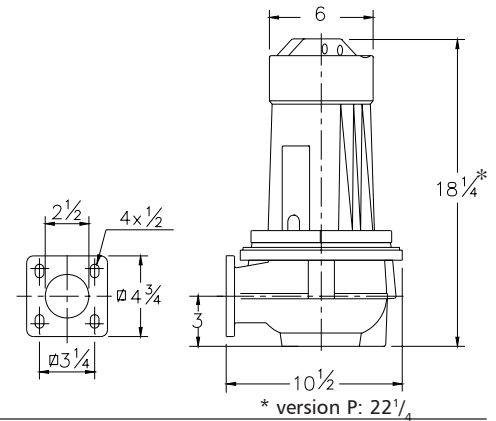


**V**  
Guide bar coupling:  
Type V65 or V80



**F**  
Freestanding:  
With support and  
3" hose adapter  
or NPT threaded  
connection

The motor is cooled by the surrounding water.



### Versions

### Weight

**B Basic version**

95 lbs

**P FM approved version**

121 lbs

Certified according to:  
Class I, Division I, Groups C&D T4  
Standard with thermostats and  
waterdetector in motorhousing.

### Optional:

**Thermostiches** in motorwindings  
Standard for FM approved version

**Flexible protective sheating for cable**  
(AISI 316)

**Water detector in motor and oil housing**(for flame proof version only in oil housing with external cable)

### Motor connection details

voltage [V]*	rated current[A]	electrical cable size					
		DOL-start		with waterdetector and/or thermostiches		FM approved version	
220	7.4	1xAWG16/4		1xAWG16/7		1xAWG14/8	
380	4.3	1xAWG16/4		1xAWG16/7		1xAWG14/8	
440	3.6	1xAWG16/4		1xAWG16/7		1xAWG14/8	
460	3.5	1xAWG16/4		1xAWG16/7		1xAWG14/8	
575	2.8	1xAWG16/4		1xAWG16/7		1xAWG14/8	

starting current DOL-start

: 4.8 x rated current

\* other voltages on request

*We reserve the right to alter specifications without prior notice.*