



# ITT

## ROBOT PUMPS

### Vortex Pump

### RW2130DC

60 c/s

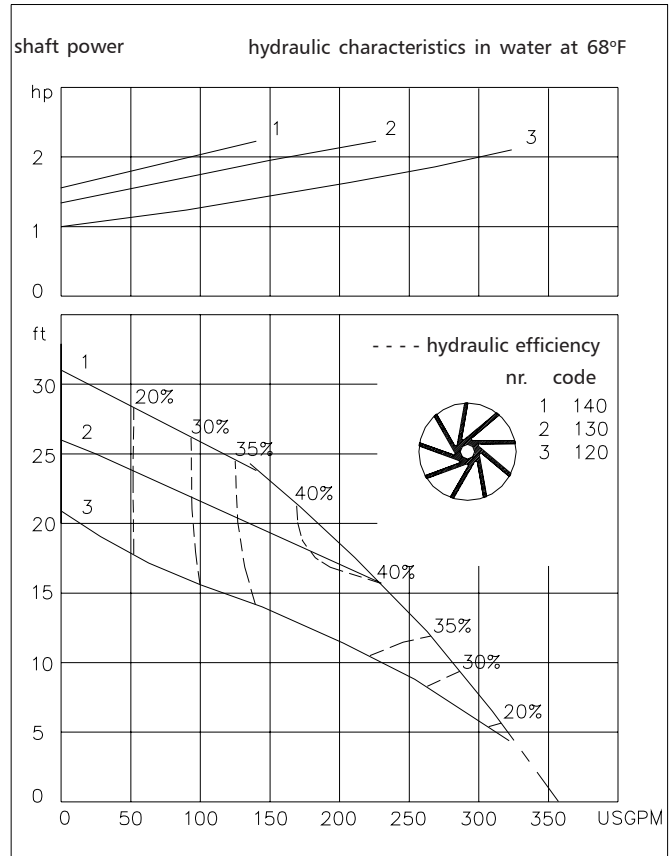
The vortex impeller pumps are designed to pump a wide variety of solids contaminated liquids in many applications. Vortex pumps are used for sewage and other waste water applications. Hydraulic components are available in special materials.

#### Pump

solids passage : 3"  
 suction diameter : 3"  
 discharge diameter : 4"  
 impeller code : 140-120  
 recommended minimum flow : 55 USGPM

#### Motor

rated horse power : 2.3 hp  
 rated electrical power : 2.4 kW  
 rated kVA : 2.8 kVA  
 mains : 60 c/s - 3 phase  
 speed : 1750 rpm  
 rated efficiency : 71 %  
 rated power factor (cos phi) : 0.85  
 degree of protection : IP 68  
 isolation class : H (356 °F)  
 max. water temperature : 104 °F  
 (higher temperatures on request)  
 standard cable length : 33 ft  
 max. submersion depth : 66 ft



Pump curves are for cast iron only.

15.9 USGPM = 1 l/s    1 hp = 0.746 kW    1 ft = 0.3 m    1 lb = 0.45 kg

#### Materials

motor housing : 1  
 seal housing : 1  
 volute : 1  
 impeller : 2 5  
 shaft : 3 5  
 bolts : 4 5

elastomers : 6+7 8  
 electrical cable : 7  
 seal lubrication : oil  
 pump seal : silicon carbide-silicon carbide  
 motor seal : carbon-ceramic  
 primer : Alkyd primer  
 top coating : Two component high-build polyurethane coating

1	cast iron	ASTM A-48 Cl.35
2	sg cast iron	ASTM A445 Gr.60-46-18
3	stainless steel	AISI 431
4	stainless steel	AISI 304
5	stainless steel	AISI 316
6	stainless steel	AISI 329
7	wear resistant sg iron	HB500
8	nitrile	(NBR)
9	neoprene	(CR)
10	viton	(FPM)

[www.robotpumps.com](http://www.robotpumps.com)

*Engineered for life*

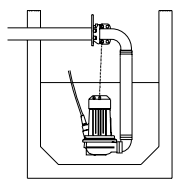


# ITT

## ROBOT PUMPS

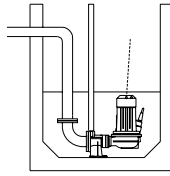
### Installation options

### RW2130DC



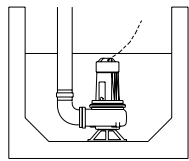
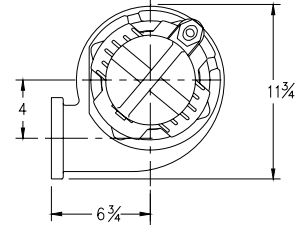
**H**

Header coupling:  
Type HK100 or HK80



**V**

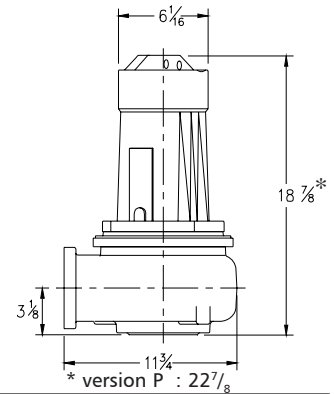
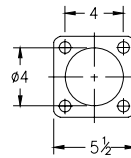
Guide bar coupling:  
Type V100



**F**

Freestanding:  
With support and  
3" or 4" hose adapter  
or 4" NPT threaded  
connection

The motor is cooled by the surrounding water.



### Versions

### Weight

**B Basic version**

114 lbs

**P FM approved version**

141 lbs

Certified according to:  
Class I, Division I, Groups C&D T4  
Standard with thermostats and  
waterdetector in motorhousing.

### Optional:

**Thermostiches** in motorwindings  
Standard for FM approved version

**Flexible protective sheathing for cable**  
(AISI 316)

**Water detector in motor and oil housing** (for FM approved version only in oil housing with external cable)

### Motor connection details

		electrical cable size					
voltage [V]*	rated current[A]			with waterdetector and/or thermostiches		FM approved version	
		DOL-start	YD-start	DOL-start	YD-start	DOL-start	YD-start
220	7.4	1xAWG16/4	1xAWG16/7	1xAWG16/7	1xAWG16/10	1xAWG14/8	1xAWG14/12
380	4.3	1xAWG16/4	1xAWG16/7	1xAWG16/7	1xAWG16/10	1xAWG14/8	1xAWG14/12
440	3.7	1xAWG16/4	1xAWG16/7	1xAWG16/7	1xAWG16/10	1xAWG14/8	1xAWG14/12
460	3.5	1xAWG16/4	1xAWG16/7	1xAWG16/7	1xAWG16/10	1xAWG14/8	1xAWG14/12
575	2.8	1xAWG16/4	1xAWG16/7	1xAWG16/7	1xAWG16/10	1xAWG14/8	1xAWG14/12

starting current DOL-start : 4.8 x rated current

\* other voltages on request

starting current YD-start : 1.6 x rated current

We reserve the right to alter specifications without prior notice.