



ITT

ROBOT PUMPS

Dry Installed Vortex Slurry Pump

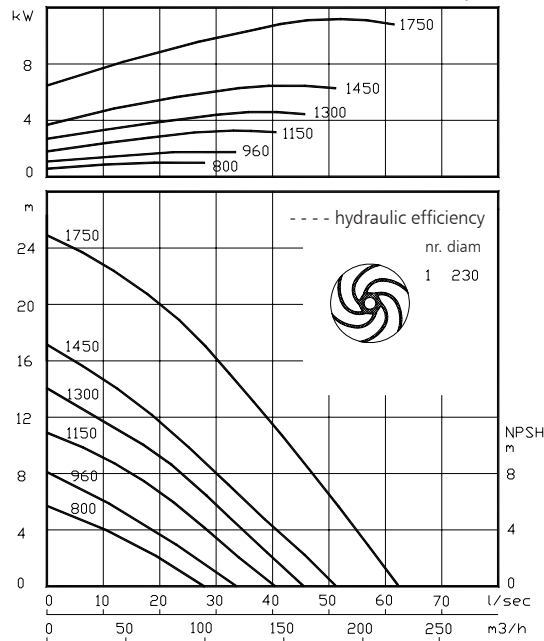
BD4030

The Vortex impeller pumps in wear resistant Nihard 4 are designed to pump a wide variety of highly abrasive solids contaminated liquids in many applications. These pumps are designed for a stationary dry installation of pump and motor.

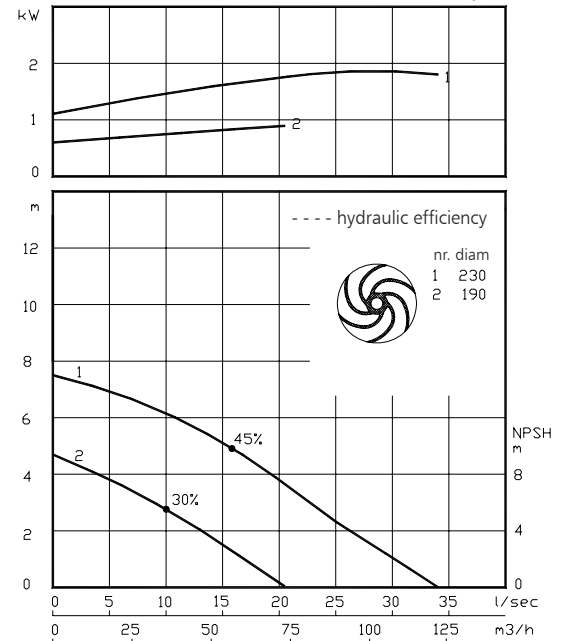
solids passage : 80 mm **50 Hz**
 discharge flange : NW 100
 suction flange : NW 100
 impeller diameter : 230 and 190 mm
 recommended min. flow : 6 l/s (21 m³/h)

hydraulic characteristics in clean cold water according to ISO 9906 grade 2

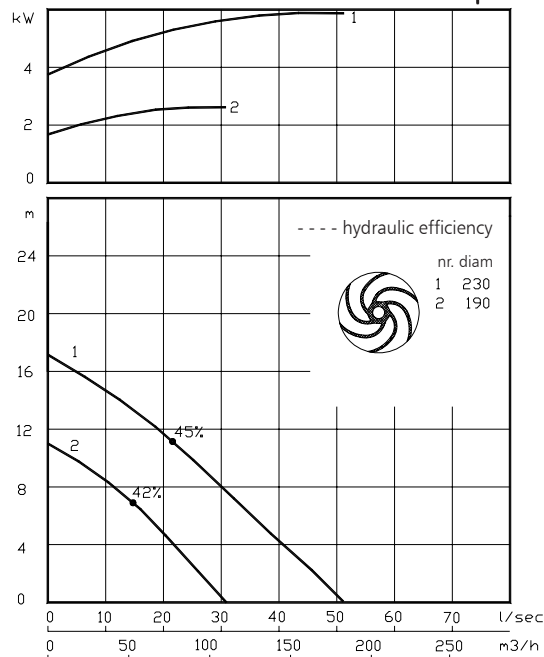
shaft power **1450 rpm**



shaft power **960 rpm**



shaft power **800-1750 rpm**



Available electric motors Degree of protection IP55		
Class	kW	[rpm]
IEC 132S	3.0	960
	5.5	1450
IEC 132M	4.0	960
	7.5	1450
IEC 160M	11.0	1450
IEC 160L	15.0	1450

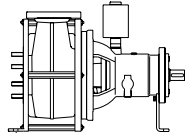
www.robotpumps.com

Engineered for life



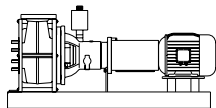
Installation options

BD4030



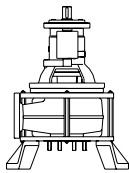
H

Horizontal installation:
Bare shaft



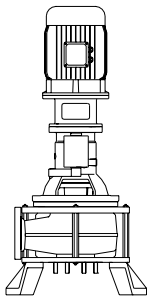
HM

Horizontal installation:
With foundation plate
and electric motor.



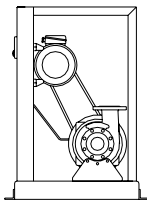
V

Vertical installation:
Bare shaft



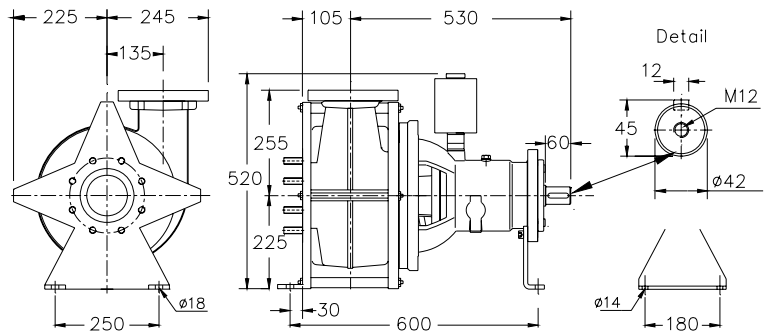
VM

Vertical installation:
With support and electric
motor.



K

V-belt driven:
Frame construction.
For motors IEC100L-200L.



Flange connections

Standard

DIN 2501 PN10/PN16

p.c.d. Number of holes

Discharge NW 100 180 8x M16

Suction NW 100 180 8x M16

Weight (H version): 110 kg.

Optional:

- seal flushing

Other options and materials upon request

Materials

sealhousing	: 1
wear plate	: 6
pump casing	: 6
impeller	: 6
pump shaft	: 3 5
bearing housing	: 1
bolts	: 4 5
elastomer	: 8+9 10
seal lubrication	: oil
pump seal	: silicon carbide-silicon carbide
secondary seal	: carbon - ceramic
primer	: alkyd primer
top coating	: two components high-build polyurethane coating

1	cast iron	EN-GJL-250
2	sg cast iron	EN-GJS-400-15
3	stainless steel 431	X20 CrNi 17 2
4	stainless steel 304	X5 CrNi 18 10
5	stainless steel 316	X5 CrNiMo 17 12 2
6	Nihard 4	G-X300CrNiSi 9 5 2
7	wear resistant sg iron	HB 500
8	nitrile	(NBR)
9	neoprene	(CR)
10	viton	(FPM)

We reserve the right to alter specifications without prior notice.