



# ITT

## ROBOT PUMPS

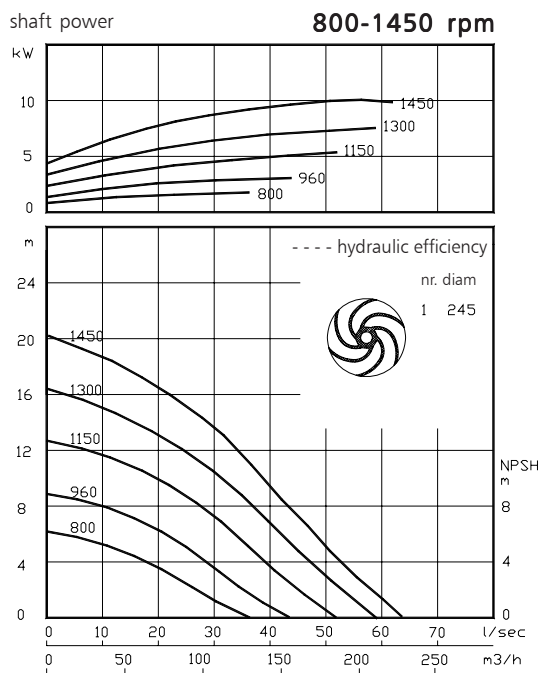
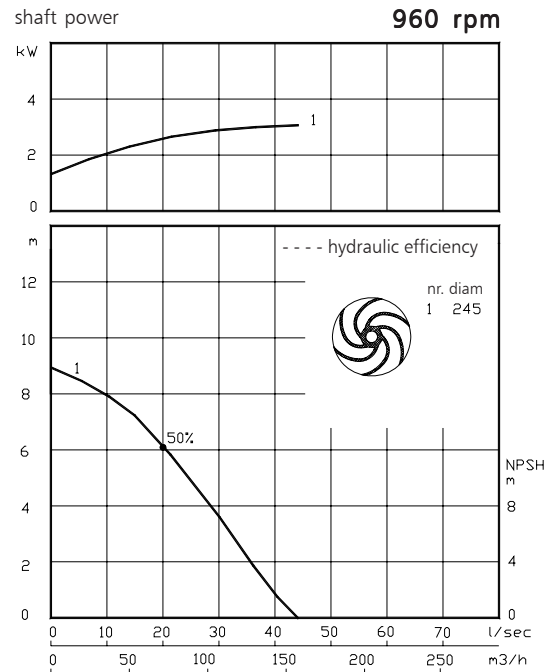
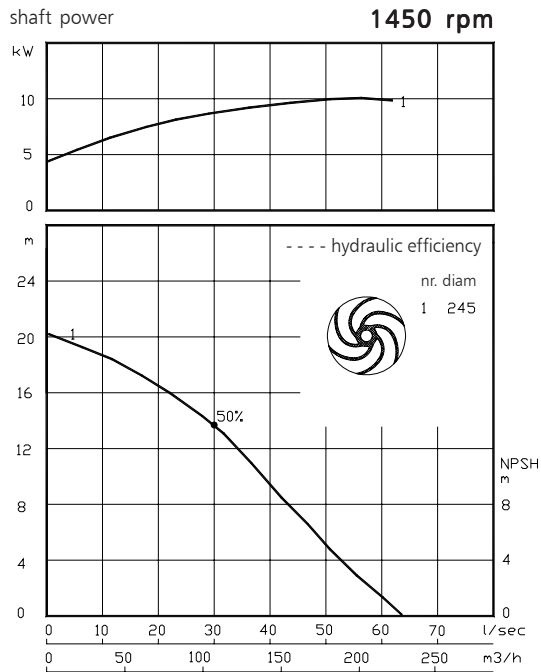
### Dry Installed Vortex Slurry Pump

### BD4041

The Vortex impeller pumps in wear resistant Nihard 4 are designed to pump a wide variety of highly abrasive solids contaminated liquids in many applications. These pumps are designed for a stationary dry installation of pump and motor.

solids passage : 100 mm **50 Hz**  
 discharge flange : NW 100  
 suction flange : NW 100  
 impeller diameter : 245 mm  
 recommended min. flow : 6 l/s (21 m<sup>3</sup>/h)

hydraulic characteristics in clean cold water according to ISO 9906 grade 2



Available electric motors Degree of protection IP55		
Class	kW	[rpm]
IEC 132S	3.0	960
	5.5	1450
IEC 132M	4.0	960
	5.5	960
	7.5	1450
IEC 160M	11.0	1450
IEC 160L	15.0	1450

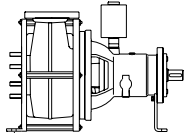
[www.robotpumps.com](http://www.robotpumps.com)

*Engineered for life*



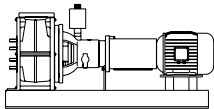
### Installation options

### BD4041



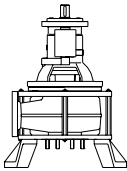
#### H

Horizontal installation:  
Bare shaft



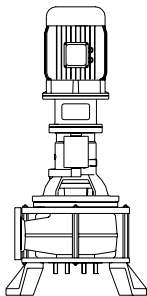
#### HM

Horizontal installation:  
With foundation plate  
and electric motor.



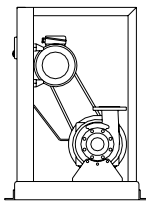
#### V

Vertical installation:  
Bare shaft



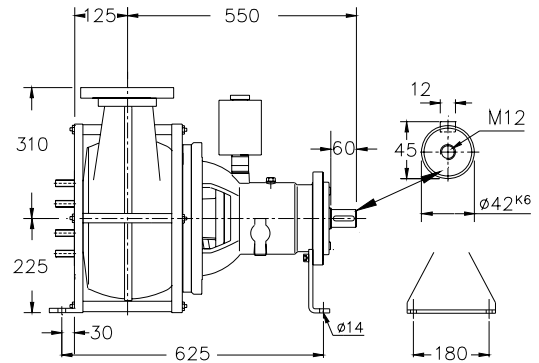
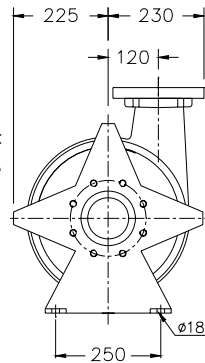
#### VM

Vertical installation:  
With support and electric  
motor.



#### K

V-belt driven:  
Frame construction.  
For motors IEC100L-200L.



#### Flange connections

Standard

DIN 2501 PN10/PN16

p.c.d. Number of holes

Discharge NW 100 180 8x M16

Suction NW 100 180 8x M16

Weight (H version): 135 kg.

#### Optional:

- seal flushing

*Other options and materials upon request*

### Materials

sealhousing	: 1
wear plate	: 6
pump casing	: 6
impeller	: 6
pump shaft	: 3 5
bearing housing	: 1
bolts	: 4 5
elastomer	: 8+9 10
seal lubrication	: oil
pump seal	: silicon carbide-silicon carbide
secondary seal	: carbon - ceramic
primer	: alkyd primer
top coating	: two components high-build polyurethane coating

1	cast iron	EN-GJL-250
2	sg cast iron	EN-GJS-400-15
3	stainless steel 431	X20 CrNi 17 2
4	stainless steel 304	X5 CrNi 18 10
5	stainless steel 316	X5 CrNiMo 17 12 2
6	Nihard 4	G-X300CrNiSi 9 5 2
7	wear resistant sg iron	HB 500
8	nitrile	(NBR)
9	neoprene	(CR)
10	viton	(FPM)

We reserve the right to alter specifications without prior notice.