



# ITT

## ROBOT PUMPS

### Turbotex Pump

### RT4040DL

### 50 Hz

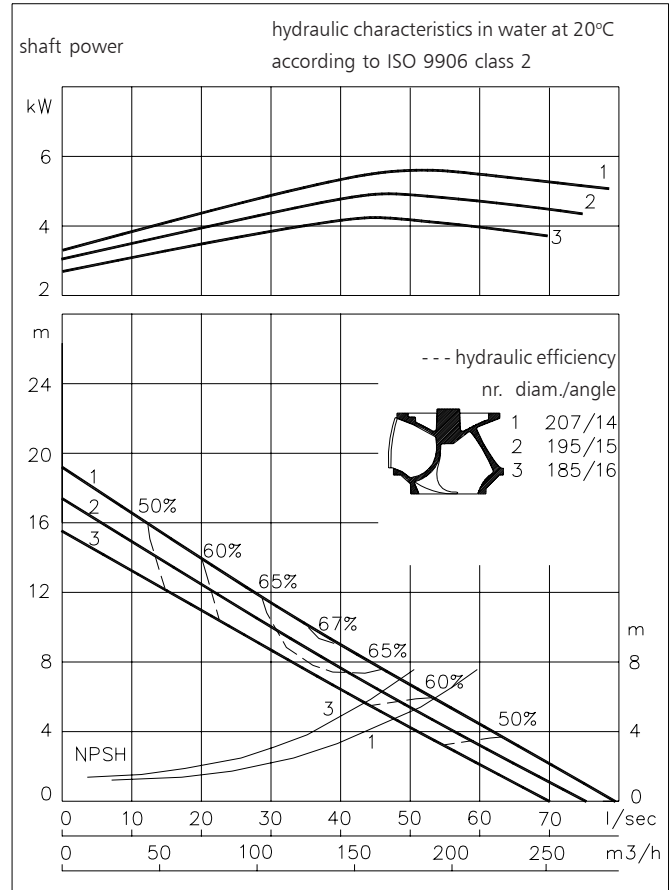
Turbotex pumps are auto cleaning solids handling pumps. The impeller leading edge is almost parallel with the direction of the flow and leads into the impeller passage. Turbotex pumps are first choice for raw unscreened sewage as well as for lightly contaminated liquids.

#### Pump

solids passage : 100 mm  
 suction diameter : 120 mm  
 discharge diameter : 100 mm  
 impeller diameter : 207-185 mm  
 recommended minimum flow : 6 l/s (21 m<sup>3</sup>/h)

#### Motor

rated shaft power : 6.0 kW  
 rated electrical power : 7.7 kW  
 mains : 50 Hz - 3 phase  
 nominal speed : 1395 rpm  
 motor efficiency : 78%  
 rated power factor (cos phi) : 0.85  
 degree of protection : IP 68  
 isolation class : H (180 °C)  
 max. water temperature : 40 °C  
 (higher temp. on request)  
 standard cable length : 10 m



#### Materials

motor housing : 1  
 seal housing : 1  
 volute : 1  
 impeller : 2 7  
 shaft : 3 5  
 bolts : 4 5  
 cooling jacket : 5  
 elastomers : 8+9 10  
 electrical cable : 9  
 seal lubrication : oil  
 pump seal : silicon carbide-silicon carbide  
 motor seal : silicon carbide-silicon carbide  
 primer : Alkyd primer  
 top coating : Two component high-build polyurethane coating

1	cast iron	EN-GJL-250
2	sg cast iron	EN-GJS-400-15
3	stainless steel 431	X20 CrNi 17 2
4	stainless steel 304	X5 CrNi 18 10
5	stainless steel 316	X5 CrNiMo 17 12 2
6	stainless steel 329	X4 CrNiMoN 27 5 2
7	wear resistant sg iron	HB 500
8	nitrile	(NBR)
9	neoprene	(CR)
10	viton	(FPM)

[www.robotpumps.com](http://www.robotpumps.com)

*Engineered for life*

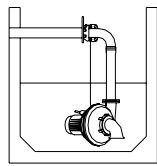


# ITT

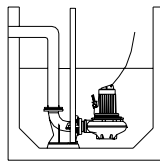
## ROBOT PUMPS

### Installation options

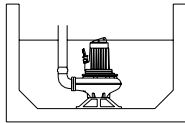
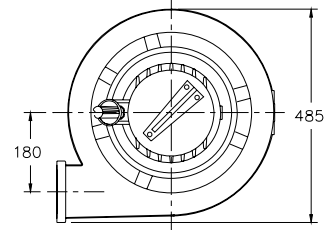
### RT4040DL



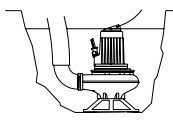
**H**  
Header coupling:  
Type HK100



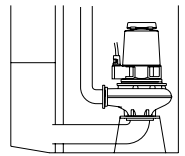
**V**  
Guide bar coupling:  
Type V100



**F**  
Freestanding:  
With support and  
100 mm hose adapter

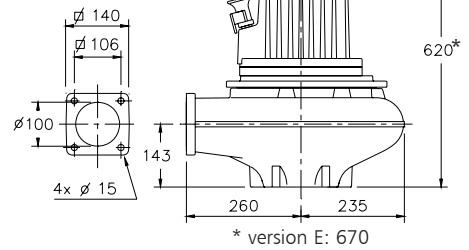


**T**  
Transportable:  
With support and  
100 mm hose adapter



**A**  
Immersible:  
vertical or horizontal  
with cooling system and  
support.  
Discharge: 100 mm  
Suction: 125 mm

The motor is cooled by the surrounding water.  
With cooling version the motor can run continuously above the waterlevel



### Versions

**B Basic**

Weight:  
106 kg

**E Explosion proof version**

Certified according to: II 2 G Ex de IIB c T4  
Standard with 2 sets of thermostiches.

121 kg

**C Version with cooling system**

Internal or external circulation  
(external cooling water min. flow 0.15 l/s)

121 kg

### Optional:

**Thermostiches** in motorwindings  
Standard for explosion proof version (2 sets) and  
version with cooling system.

**Flexible protective sheathing for cable**  
(AISI 316)

**Water detector in motor and oil housing** (for explosion proof version only in oil housing with external cable)

### Motor connection details

voltage [V]*	rated current[A]	number of cables x number of cores x cross section [mm²]					
				with waterdetector and/or thermostiches		explosion proof version	
		DOL-start	YD-start	DOL- start	YD-start	DOL- start	YD-start
220	240	1x4x4	1x7x2.5	1x4x4+1x4x2.5**	1x7x2.5+1x4x2.5**	1x4x4+1x4x2.5	1x7x2.5 + 1x4x2.5
380	13.8	1x4x2.5	1x7x1.5	1x7x1.5	1x10x1.5	1x7x2.5	1x7x2.5 + 1x4x2.5
400	13.1	1x4x2.5	1x7x1.5	1x7x1.5	1x10x1.5	1x7x2.5	1x7x2.5 + 1x4x2.5
415	12.6	1x4x2.5	1x7x1.5	1x7x1.5	1x10x1.5	1x7x2.5	1x7x2.5 + 1x4x2.5
500	10.4	1x4x2.5	1x7x1.5	1x7x1.5	1x10x1.5	1x7x2.5	1x7x2.5 + 1x4x2.5

starting current DOL start : 4.2 x rated current

starting current YD-start : 1.4 x rated current

\*other voltages on request

\*\* not possible for basic version

We reserve the right to alter specifications without prior notice.