



ITT

ROBOT PUMPS

Turbotex Pump

RT4040FH

50 Hz

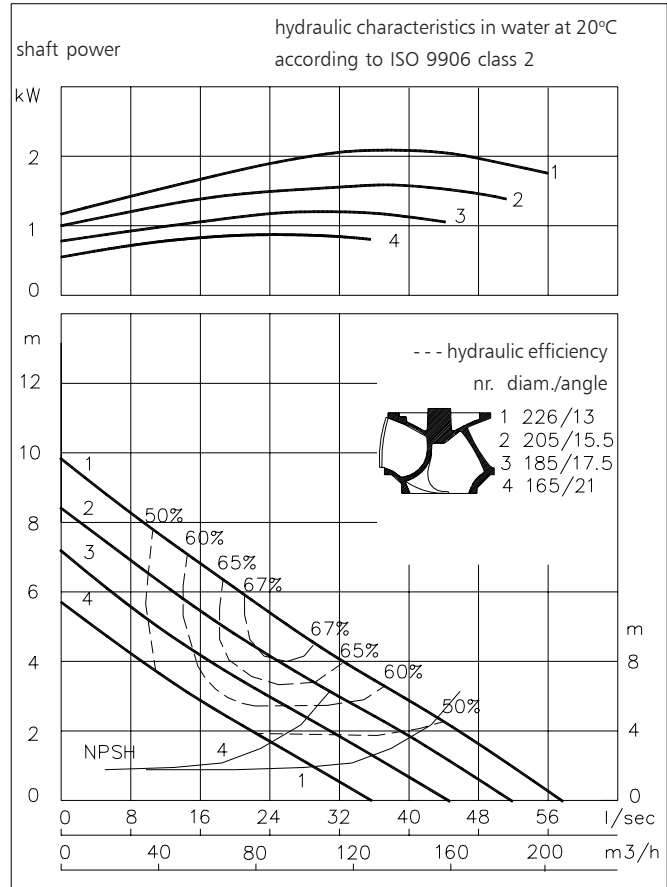
Turbotex pumps are auto cleaning solids handling pumps. The impeller leading edge is almost parallel with the direction of the flow and leads into the impeller passage. Turbotex pumps are first choice for raw unscreened sewage as well as for lightly contaminated liquids.

Pump

solids passage : 100 mm
 suction diameter : 120 mm
 discharge diameter : 100 mm
 impeller diameter : 226 -165 mm
 recommended minimum flow : 6 l/s (21 m³/h)

Motor

rated shaft power : 4.0 kW
 rated electrical power : 5.3 kW
 mains : 50 Hz - 3 phase
 nominal speed : 930 rpm
 motor efficiency : 75%
 rated power factor (cos phi) : 0.75
 degree of protection : IP 68
 isolation class : H (180 °C)
 max. water temperature : 40 °C
 (higher temp. on request)
 standard cable length : 10 m



Materials

motor housing	: 1
seal housing	: 1
volute	: 1
impeller	: 2 7
shaft	: 3 5
bolts	: 4 5
elastomers	: 8+9 10
electrical cable	: 9
seal lubrication	: oil
pump seal	: silicon carbide-silicon carbide
motor seal	: silicon carbide-silicon carbide
primer	: Alkyd primer
top coating	: Two component high-build polyurethane coating

1	cast iron	EN-GJL-250
2	sg cast iron	EN-GJS-400-15
3	stainless steel 431	X20 CrNi 17 2
4	stainless steel 304	X5 CrNi 18 10
5	stainless steel 316	X5 CrNiMo 17 12 2
6	stainless steel 329	X4 CrNiMoN 27 5 2
7	wear resistant sg iron	HB 500
8	nitrile	(NBR)
9	neoprene	(CR)
10	viton	(FPM)

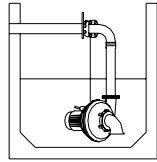
www.robotpumps.com

Engineered for life

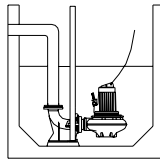


Installation options

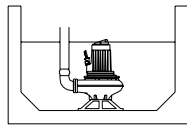
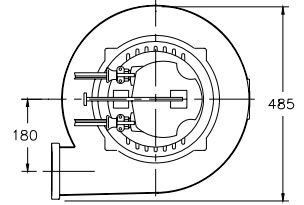
RT4040FH



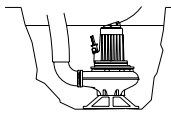
H
Header coupling:
Type HK100



V
Guide bar coupling:
Type V100

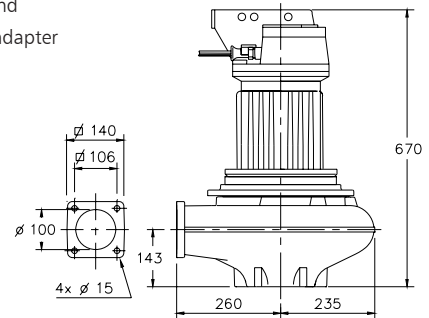


F
Freestanding:
With support and
100 mm hose adapter



T
Portable:
With support and
100 mm hose adapter

The motor is cooled by the surrounding water.



Versions

E Explosion proof version

Certified according to: II 2 G Ex de IIB c T4
Standard with 2 sets of thermostiches.

Weight:

126 kg

Optional:

Flexible protective sheating for cable
(AISI 316)

Water detector in oil housing
(with external cable)

Motor connection details

voltage [V]*	rated current[A]	number of cables x number of cores x cross section [mm²]			
		explosion proof version			
		DOL-start	YD-start		
220	18.7	1x7x2.5	1x7x2.5 + 1x4x2.5		
380	10.8	1x7x2.5	1x7x2.5 + 1x4x2.5		
400	10.3	1x7x2.5	1x7x2.5 + 1x4x2.5		
415	9.9	1x7x2.5	1x7x2.5 + 1x4x2.5		
500	8.2	1x7x2.5	1x7x2.5 + 1x4x2.5		

starting current DOL start

: 5.5 x rated current

*other voltages on request

starting current YD-start

: 1.8 x rated current

We reserve the right to alter specifications without prior notice.