



Turbotex Pump

RT4042FH

50 Hz

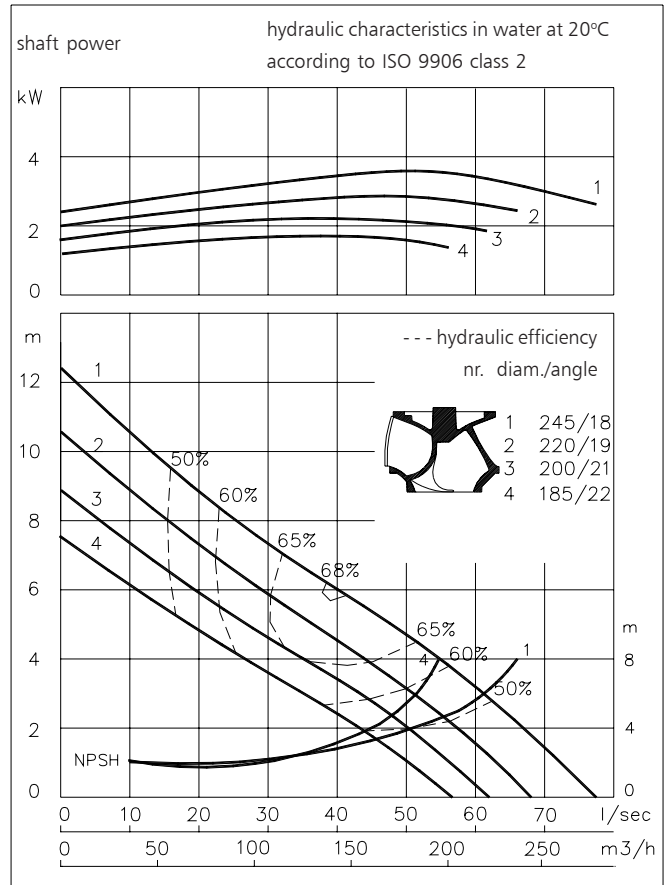
Turbotex pumps are auto cleaning solids handling pumps. The impeller leading edge is almost parallel with the direction of the flow and leads into the impeller passage. Turbotex pumps are first choice for raw unscreened sewage as well as for lightly contaminated liquids.

Pump

solids passage : 100 mm
 suction diameter : 150 mm
 discharge diameter : 150 mm
 impeller diameter : 245-185 mm
 recommended minimum flow : 13 l/s (47 m³/h)

Motor

rated shaft power : 4.0 kW
 rated electrical power : 5.3 kW
 mains : 50 Hz - 3 phase
 nominal speed : 930 rpm
 motor efficiency : 75%
 rated power factor (cos phi) : 0.75
 degree of protection : IP 68
 isolation class : F (155 °C)
 max. water temperature : 40 °C
 (higher temp. on request)
 standard cable length : 10 m



Materials

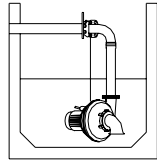
motor housing : 1
 seal housing : 1
 volute : 1
 impeller : 2 7
 shaft : 3 5
 bolts : 4 5
 cooling jacket : 5
 elastomers : 8+9 10
 electrical cable : 9
 seal lubrication : oil
 pump seal : silicon carbide-ceramic
 motor seal : carbon - ceramic
 primer : Alkyd primer
 top coating : Two component high-build polyurethane coating

1	cast iron	EN-GJL-250
2	sg cast iron	EN-GJS-400-15
3	stainless steel 431	X20 CrNi 17 2
4	stainless steel 304	X5 CrNi 18 10
5	stainless steel 316	X5 CrNiMo 17 12 2
6	stainless steel 329	X4 CrNiMoN 27 5 2
7	wear resistant sg iron	HB 500
8	nitrile	(NBR)
9	neoprene	(CR)
10	viton	(FPM)

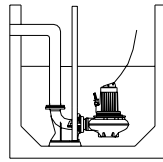


Installation options

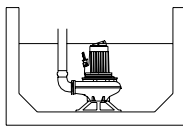
RT4042FH



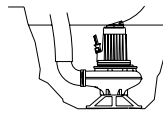
H
Header coupling:
Type HK150



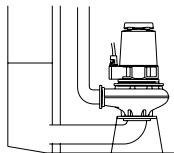
V
Guide bar coupling:
Type V150N



F
Freestanding:
With support and
150mm hose adapter

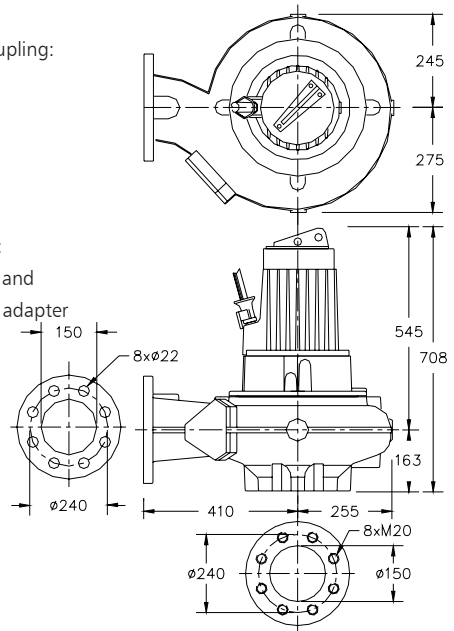


T
Transportable:
With support and
150mm hose adapter



A
Immersible:
vertical or horizontal
with cooling sytem and
support.
Discharge: 150mm
Suction: 150mm

The motor is cooled by the surrounding water.
With cooling version the motor can run continuously above the waterlevel



Versions

B Basic

Weight:

160 kg

C Version with cooling system

Internal or external circulation
(external cooling water min. flow 0.15 l/s)

172 kg

Optional:

Thermoswitches in motorwindings
Standard for version with cooling system.

Flexible protective sheathing for cable
(AISI 316)

Water detector in motor and oil housing

Motor connection details

voltage [V]*	rated current[A]	number of cables x number of cores x cross section [mm²]			
				with waterdetector and/or thermoswitches	
		DOL-start	YD-start	DOL-start	YD-start
220	18.7	1x4x2.5	1x7x1.5	1x7x2.5	1x10x1.5
380	10.8	1x4x2.5	1x7x1.5	1x7x2.5	1x10x1.5
400	10.3	1x4x2.5	1x7x1.5	1x7x2.5	1x10x1.5
415	9.9	1x4x2.5	1x7x1.5	1x7x2.5	1x10x1.5
500	8.2	1x4x2.5	1x7x1.5	1x7x2.5	1x10x1.5

starting current DOL start : 5.5 x rated current

starting current YD-start : 1.8 x rated current

*other voltages on request

We reserve the right to alter specifications without prior notice.