



ITT

ROBOT PUMPS

Turbotex Pump

RT4042DZ

60 c/s

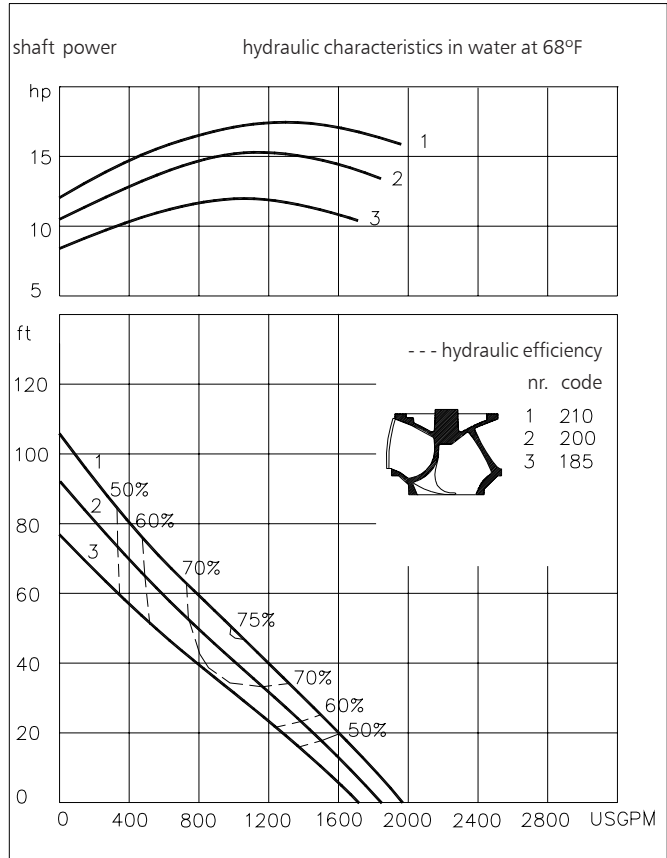
Turbotex pumps are auto cleaning solids handling pumps. The impeller leading edge is almost parallel with the direction of the flow and leads into the impeller passage. Turbotex pumps are first choice for raw unscreened sewage as well as for lightly contaminated liquids.

Pump

solids passage : 4"
 suction diameter : 6"
 discharge diameter : 6"
 impeller diameter : 210 - 185
 recommended minimum flow : 207 USGPM

Motor

rated horse power : 18.5 hp
 rated electrical power : 17.5 kW
 rated kVA : 20.8 kVA
 mains : 60 c/s - 3 phase
 speed : 1750 rpm
 rated efficiency : 78%
 rated power factor (cos phi) : 0.84
 degree of protection : IP 68
 isolation class : F (311 °F)
 max. water temperature : 104 °F
 (higher temperatures on request)
 standard cable length : 33 ft
 max. submersion depth : 66 ft



15.9 USGPM = 1 l/s 1 hp = 0.736 kW 1 ft = 0.3 m 1 lb = 0.45 kg

Materials

motor housing : 1
 seal housing : 1
 volute : 1
 impeller : 2 7
 shaft : 3 5
 bolts : 4 5
 cooling jacket : 5
 elastomers : 8+9 10
 electrical cable : 9
 seal lubrication : oil
 pump seal : silicon carbide-ceramic
 motor seal : carbon - ceramic
 primer : Alkyd primer
 top coating : Two component high-build polyurethane coating

1	cast iron	ASTM A-48 Cl.35
2	sg cast iron	ASTM A445 Gr.60-46-18
3	stainless steel	AISI 431
4	stainless steel	AISI 304
5	stainless steel	AISI 316
6	bronze	ASTM B 145 Gr. 4a
7	wear resistant sg iron	HB500
8	nitrile	(NBR)
9	neoprene	(CR)
10	viton	(FPM)

www.ittwwwalphen.com

Engineered for life

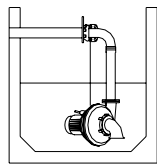


ITT

ROBOT PUMPS

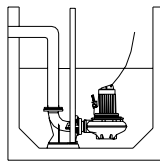
Installation options

RT4042DZ



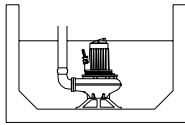
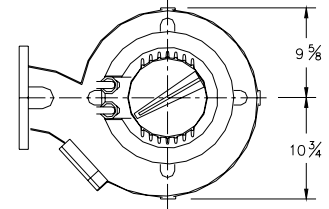
H

Header coupling:
Type HK150



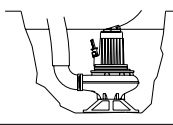
V

Guide bar coupling:
Type V150N



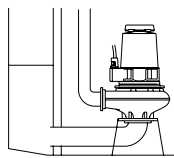
F

Freestanding:
With support and
6" hose adapter



T

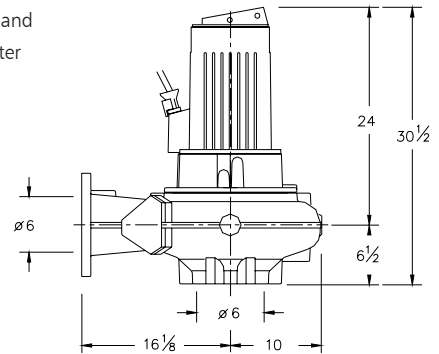
Portable:
With support and
6" hose adapter



A

Immersible:
vertical or horizontal
with cooling system and
support.
Discharge: 6"
Suction: 6"

The motor is cooled by the surrounding water.
With cooling version the motor can run continuously above the waterlevel



Versions

B Basic version

Weight

452 lbs

C Version with cooling system

Internal or external circulation
(ext. coolingwater min. flow 2.4 USGPM)

478 lbs

Optional:

Thermoswitches in motorwindings
Standard for version with cooling system.

Flexible protective sheathing for cable
(AISI 316)

Water detector in motor and oil housing

Motor connection details

voltage [V]*	rated curr.[A]	electronic cable size		with waterdetector and/or thermoswitches			
		DOL-start	YD-start	DOL- start	YD-start		
220	55.1	2xAWG 8/4	2xAWG 8/4	-	-		
380	31.9	1xAWG 8/4	2xAWG 12/4	1xAWG 8/4+1xAWG 14/4	-		
440	27.5	1xAWG 8/4	2xAWG 12/4	1xAWG 8/4+1xAWG 14/4	-		
460	26.3	1xAWG 8/4	2xAWG 12/4	1xAWG 8/4+1xAWG 14/4	-		
575	21.1	1xAWG 10/4	1xAWG 14/7	1xAWG 10/4+1xAWG 14/4	1xAWG 14/7+1xAWG 14/4		

starting current DOL start : 5.0 x rated current
starting current YD-start : 1.7 x rated current

*other voltages on request

We reserve the right to alter specifications without prior notice.