



ITT

ROBOT PUMPS

Turbotex Pump

RT4042FH

60 c/s

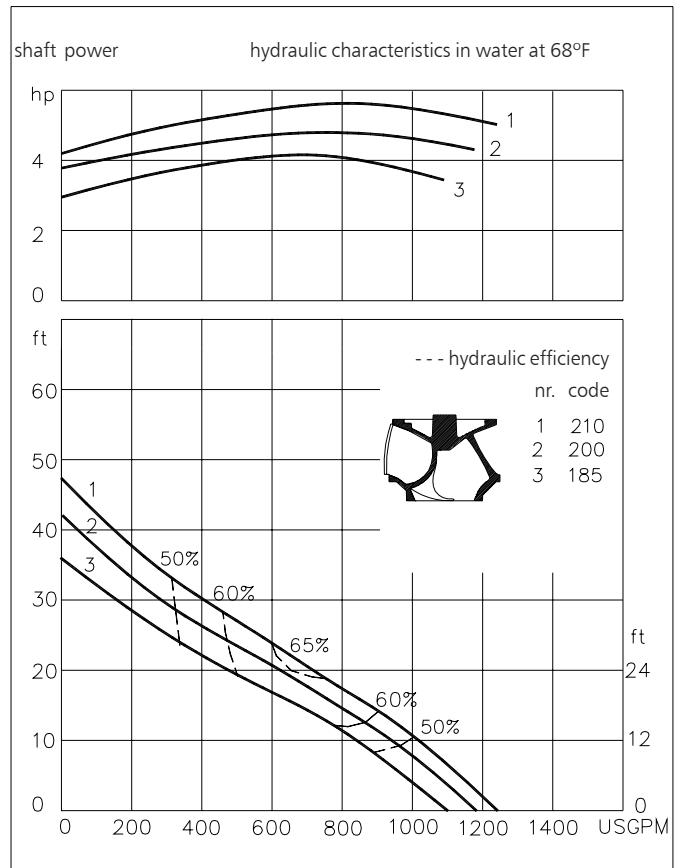
Turbotex pumps are auto cleaning solids handling pumps. The impeller leading edge is almost parallel with the direction of the flow and leads into the impeller passage. Turbotex pumps are first choice for raw unscreened sewage as well as for lightly contaminated liquids.

Pump

solids passage : 4"
 suction diameter : 6"
 discharge diameter : 6"
 impeller diameter : 210 - 185
 recommended minimum flow : 207 USGPM

Motor

rated horse power : 6.2 hp
 rated electrical power : 6.2 kW
 rated kVA : 8.3 kVA
 mains : 60 c/s - 3 phase
 speed : 1150 rpm
 rated efficiency : 75%
 rated power factor (cos phi) : 0.75
 degree of protection : IP 68
 isolation class : F (311°F)
 max. water temperature : 104 °F
 (higher temperatures on request)
 standard cable length : 33 ft
 max. submersion depth : 66 ft



15.9 USGPM = 1 l/s 1 hp = 0.736 kW 1 ft = 0.3 m 1 lb = 0.45 kg

Materials

motor housing : 1
 seal housing : 1
 volute : 1
 impeller : 2 7
 shaft : 3 5
 bolts : 4 5
 cooling jacket : 5
 elastomers : 8+9 10
 electrical cable : 9
 seal lubrication : oil
 pump seal : silicon carbide-ceramic
 motor seal : carbon - ceramic
 primer : Alkyd primer
 top coating : Two component high-build polyurethane coating

1	cast iron	ASTM A-48 Cl.35
2	sg cast iron	ASTM A445 Gr.60-46-18
3	stainless steel	AISI 431
4	stainless steel	AISI 304
5	stainless steel	AISI 316
6	bronze	ASTM B 145 Gr. 4a
7	wear resistant sg iron	HB500
8	nitrile	(NBR)
9	neoprene	(CR)
10	viton	(FPM)

www.ittwalphen.com

Engineered for life

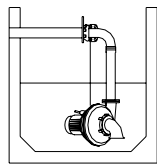


ITT

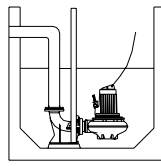
ROBOT PUMPS

Installation options

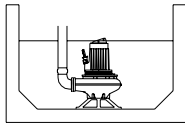
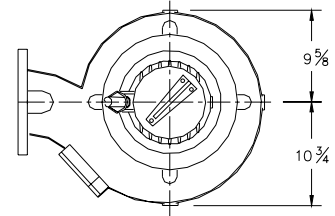
RT4042FH



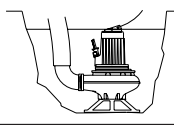
H
Header coupling:
Type HK150



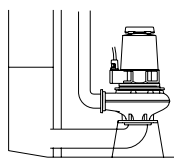
V
Guide bar coupling:
Type V150N



F
Freestanding:
With support and
6" hose adapter

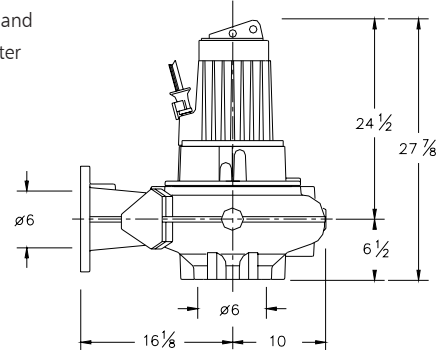


T
Transportable:
With support and
6" hose adapter



A
Immersible:
vertical or horizontal
with cooling sytem and
support.
Discharge: 6"
Suction: 6"

The motor is cooled by the surrounding water.
With cooling version the motor can run continuously above the waterlevel



Versions

Weight

- B Basic version** 353 lbs
- C Version with cooling system** 379 lbs
Internal or external circulation
(ext. coolingwater min. flow 2.4 USGPM)

Optional:

- Thermoswitches** in motorwindings
Standard for version with cooling system.
- Flexible protective sheating for cable**
(AISI 316)
- Water detector in motor and oil housing**

Motor connection details

voltage [V]*	rated curr.[A]	electrical cable size			
				with waterdetector and/or thermoswitches	
		DOL-start	YD-start	DOL- start	YD-start
220	21.5	1xAWG 10/4	1xAWG 14/7	-	-
380	12.4	1xAWG 14/4	1xAWG 16/7	1xAWG 14/7	1xAWG 16/10
440	10.8	1xAWG 14/4	1xAWG 16/7	1xAWG 14/7	1xAWG 16/10
460	10.3	1xAWG 14/4	1xAWG 16/7	1xAWG 14/7	1xAWG 16/10
575	8.2	1xAWG 16/4	1xAWG 16/7	1xAWG 16/7	1xAWG 16/10

starting current DOL start

: 5.5 x rated current

*other voltages on request

starting current YD-start

: 1.8 x rated current

We reserve the right to alter specifications without prior notice.