



# ITT

## ROBOT PUMPS

### Channel pump

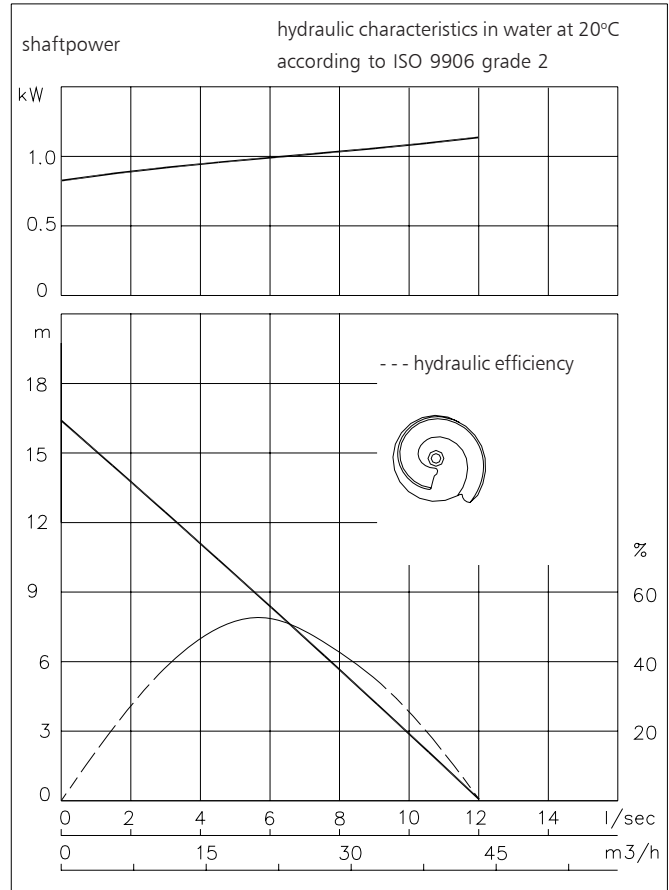
### RC2210AK

### 50 Hz

The channel impeller pumps are designed to pump lightly contaminated waste water at high efficiencies. RC pumps are equipped with an open channel impeller running against an adjustable suction cover.  
Excellent for drainage or leakage water.

<b>Pump</b>	1 channel
solids passage	: 30x50 mm
suction diameter	: 50 mm
discharge diameter	: 50 mm
impeller diameter	: 96 mm
recommended minimum flow	: 1.5 l/s (5 m <sup>3</sup> /h)

<b>Motor</b>	
rated shaft power	: 1.1 kW
rated electrical power	: 1.5 kW
mains	: 50 Hz - 3 phase
speed	: 2900 rpm
motor efficiency	: 73 %
rated power factor (cos phi)	: 0.87
degree of protection	: IP 68
isolation class	: F (155 °C)
max. water temperature (higher temp. on request)	: 40 °C
standard cable length	: 10 m



Pump curves are for cast iron only.

### Materials

motor housing	: 1
seal housing	: 1
volute	: 1
impeller	: 1
suction cover	: 1
shaft	: 3 5
bolts	: 4 5
elastomers	: 8+9 10
electrical cable	: 9
mechanical seals	: oil lubricated
pump seal	: silicon carbide-silicon carbide
motor seal	: carbon-ceramic
primer	: Alkyd primer
top coating	: Two component high-build polyurethane coating

1	cast iron	EN-GJL-250
2	sg cast iron	EN-GJS-400-15
3	stainless steel 431	X20 CrNi 17 2
4	stainless steel 304	X5 CrNi 18 10
5	stainless steel 316	X5 CrNiMo 17 12 2
6	stainless steel 329	X4 CrNiMoN 27 5 2
7	wear resistant sg iron	HB 500
8	nitrile	(NBR)
9	neoprene	(CR)
10	viton	(FPM)

[www.ittwalphen.com](http://www.ittwalphen.com)

*Engineered for life*

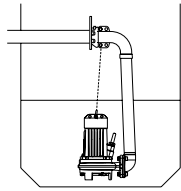


# ITT

## ROBOT PUMPS

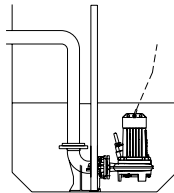
### Installation options

### RC2210AK



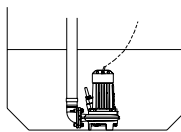
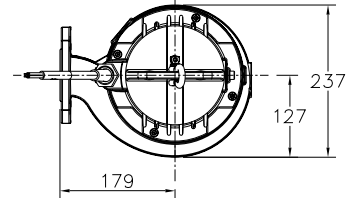
**H**

Header coupling:  
Type HK65 or HK80



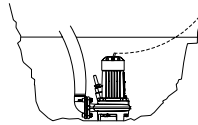
**V**

Guide bar coupling:  
Type V50 or V65-N



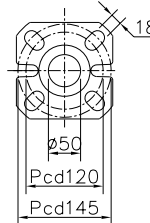
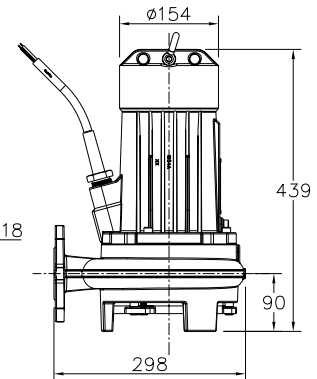
**F**

Freestanding:  
With 75mm hose adapter  
or R2.5" or R3" threaded  
connection



**T**

With 75mm hose adapter  
or R2.5" or R3" threaded  
connection



The motor is cooled by the surrounding water.

### Version

### Weight

**B Basic**

44 kg

### Optional:

**Thermoswitches** in motorwindings.

**Flexible protective sheathing for cable**  
(AISI 316)

**Water detector** in motor and oil housing

### Motor connection details

voltage [V]*	rated current[A]	number of cables x number of cores x cross section [mm <sup>2</sup> ]			
		DOL-start		with waterdetector and/or thermoswitches	
220	4.5	1x4x1.5		1x7x1.5	
380	2.6	1x4x1.5		1x7x1.5	
400	2.5	1x4x1.5		1x7x1.5	
415	2.4	1x4x1.5		1x7x1.5	
500	2.0	1x4x1.5		1x7x1.5	

starting current DOL-start

: 6.9 x rated current

\* other voltages on request

We reserve the right to alter specifications without prior notice.