



Slurry Pump

RD2110BE

50 Hz

Vortex impeller pump in wear resistant Nihard 4 for reliable transport of highly abrasive solids in high concentrations.

Pump

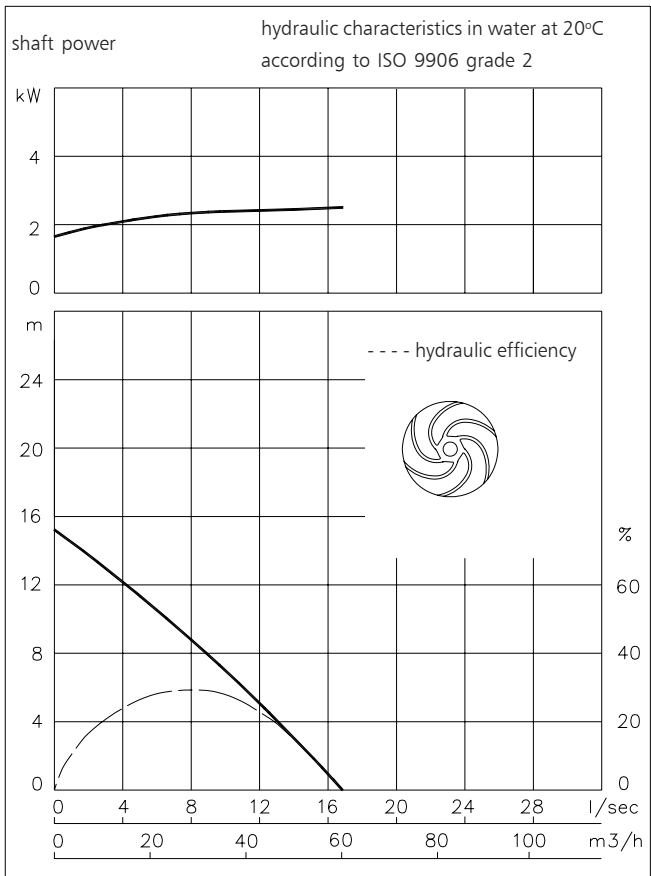
solids passage	: 55 mm
suction diameter	: 65 mm
discharge diameter	: 65 mm
impeller diameter	: 138 mm
recommended minimum flow	: 2 l/s (8 m ³ /h)

Motor

rated shaft power	: 2.6 kW
rated electrical power	: 3.5 kW
mains	: 50 Hz - 3 phase
nominal speed	: 2900 rpm
rated efficiency	: 74 %
rated power factor (cos phi)	: 0.90
degree of protection	: IP 68
isolation class	: F (155 °C)
max. water temperature	: 40 °C
(higher temperatures on request)	
standard cable length	: 10 m

Materials

motor housing	: 1
seal housing	: 7
volute	: 7
hose/flange adapter	: 1
impeller	: 7
shaft	: 3 5
bolts	: 4 5
elastomers	: 8+9 10
electrical cable	: 9
seal lubrication	: oil
pump seal	: silicon carbide-silicon carbide
motor seal	: carbon-ceramic
primer	: Alkyd primer
top coating	: Two component high-build polyurethane coating



1	cast iron	EN-GJL-250
2	sg cast iron	EN-GJS-400-15
3	stainless steel 431	X20 CrNi 17 2
4	stainless steel 304	X5 CrNi 18 10
5	stainless steel 316	X5 CrNiMo 17 12 2
6	stainless steel 329	X4 CrNiMoN 27 5 2
7	Nihard 4	G-X300CrNiSi 9 5 2
8	nitrile	(NBR)
9	neoprene	(CR)
10	viton	(FPM)

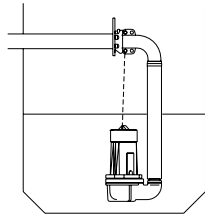


ITT

ROBOT PUMPS

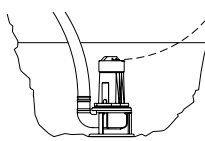
Installation options

RD2110BE



H

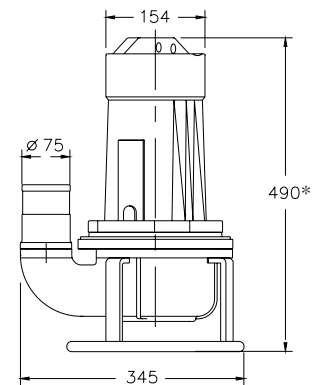
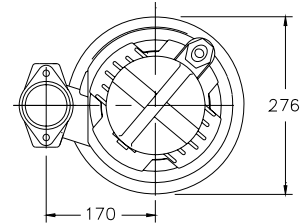
Header coupling:
Type HK65 or HK80
75mm hose adapter



T

Transportable:
With support and
75mm hose adapter
or G3" threaded
connection

The motor is cooled by the surrounding water.



* version E: 545

Version

B Basic

Weight:

45 kg

E Explosion proof version

Certified according to: II 2 G Ex de IIB c T4

55 kg

Optional:

Thermoswitches in motorwindings
Standard for explosion proof version (2 sets)

Flexible protective sheathing for cable
(AISI 316)

Water detector in motor and oil housing
(for explosion proof version only in oil housing with external cable)

Motor connection details

		number of cables x number of cores x cross section [mm ²]					
voltage [V]*	rated current[A]			with waterdetector and/or thermoswitches		explosion proof version	
		DOL-start	YD-start	DOL-start	YD-start	DOL-start	
220	10.2	1x4x2.5	1x7x1.5	1x7x1.5	1x10x1.5	1x7x2.5	
380	5.9	1x4x2.5	1x7x1.5	1x7x1.5	1x10x1.5	1x7x2.5	
400	5.6	1x4x2.5	1x7x1.5	1x7x1.5	1x10x1.5	1x7x2.5	
415	5.4	1x4x2.5	1x7x1.5	1x7x1.5	1x10x1.5	1x7x2.5	
500	4.5	1x4x2.5	1x7x1.5	1x7x1.5	1x10x1.5	1x7x2.5	

starting current DOL-start : 4.6 x rated current

* other voltages on request

starting current YD-start : 1.5 x rated current

We reserve the right to alter specifications without prior notice.