



# ITT

## ROBOT PUMPS

### Slurry Pump

### RD2110DC

60 c/s

Vortex impeller pump in wear resistant Nihard 4 for reliable transport of highly abrasive solids in high concentrations.

#### Pump

solids passage : 2"

suction diameter : 2 1/2"

discharge diameter : 2 1/2"

impeller diameter : 150

recommended minimum flow : 32 USGPM

#### Motor

rated horse power : 2.3 hp

rated electrical power : 2.4 kW

rated kVA : 2.8 kVA

mains : 60 c/s

speed : 1750 rpm

rated efficiency : 71 %

rated power factor (cos phi) : 0.85

degree of protection : IP 68

isolation class : F (311 °F)

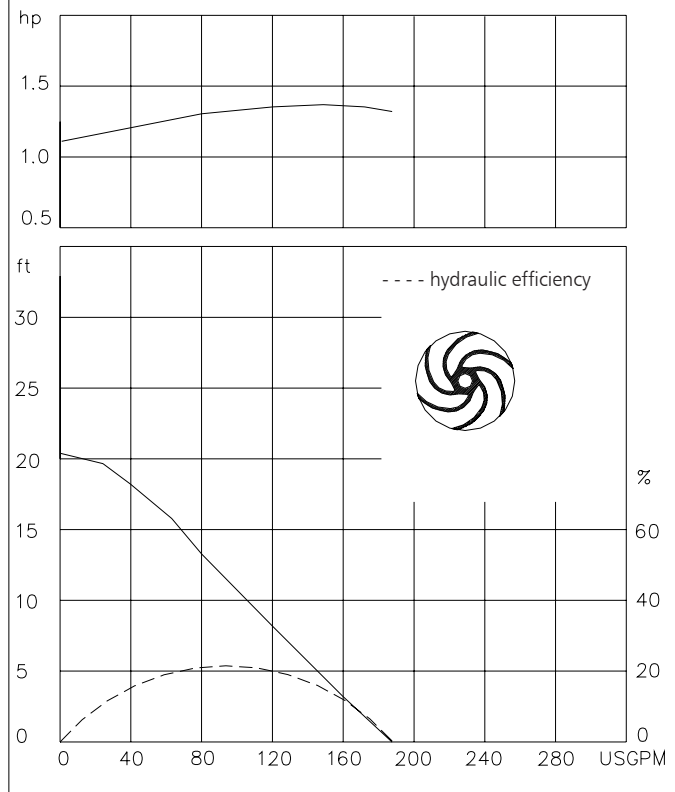
max. water temperature : 104 °F  
(higher temperatures on request)

standard cable length : 33 ft

max. submersion depth : 66 ft

shaft power

hydraulic characteristics in water at 68°F



15.9 USGPM = 1 l/s    1 hp = 0.736 kW    1 ft = 0.3 m    1 lb = 0.45 kg

#### Materials

motor housing : 1

seal housing : 7

volute : 7

hose adapter : 1

impeller : 7

shaft : 3 5

bolts : 4 5

elastomers : 8+9 10

electrical cable : 9

seal lubrication : oil

pump seal : silicon carbide-silicon carbide

motor seal : carbon-ceramic

primer : Alkyd primer

top coating : Two component high-build polyurethane coating

1	cast iron	ASTM A-48 Class 35
2	sg cast iron	ASTM A445 Gr.60-46-18
3	stainless steel	AISI 431
4	stainless steel	AISI 304
5	stainless steel	AISI 316
6	bronze	ASTM B145 Gr. 4a
7	Nihard 4	ASTM A532, class I, type D
8	nitrile	(NBR)
9	neoprene	(CR)
10	viton	(FPM)

[www.ittwwwalphen.com](http://www.ittwwwalphen.com)

*Engineered for life*

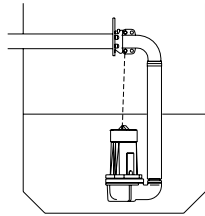


# ITT

## ROBOT PUMPS

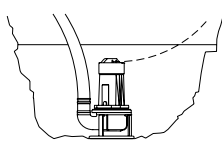
### Installation options

### RD2110DC



**H**

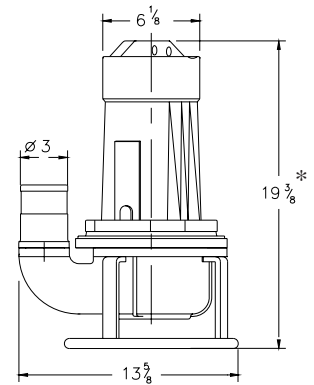
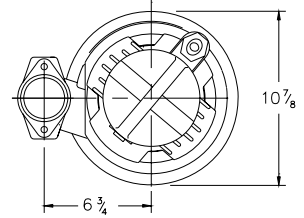
Header coupling:  
Type HK65 or HK80



**T**

Transportable:  
With support and  
3" hose adapter  
or NPT threaded  
connection

The motor is cooled by the surrounding water.



\* version P: 23 1/4

### Versions

**B Basic version**

**Weight**

95 lbs

**P FM approved version**

Certified according to:  
Class I, Division I, Groups C&D T4  
Standard with thermostats and  
waterdetector in motorhousing.

121 lbs

### Optional:

**Thermostiches** in motorwindings  
Standard for FM approved version

**Flexible protective sheathing for cable**  
(AISI 316)

**Water detector in motor and oil housing** (for explosion proof version only in oil housing with external cable)

### Motor connection details

voltage [V]*	rated current[A]	electrical cable size					
				with waterdetector and/or thermostiches		FM approved version	
		DOL-start		DOL-start		DOL-start	
220	7.4	1xAWG16/4		1xAWG16/7		1xAWG14/8	
380	4.3	1xAWG16/4		1xAWG16/7		1xAWG14/8	
440	3.6	1xAWG16/4		1xAWG16/7		1xAWG14/8	
460	3.5	1xAWG16/4		1xAWG16/7		1xAWG14/8	
575	2.8	1xAWG16/4		1xAWG16/7		1xAWG14/8	

starting current DOL-start : 4.8 x rated current

\* other voltages on request

We reserve the right to alter specifications without prior notice.