



# ITT

## ROBOT PUMPS

### Slurry Pump

### RD2110BE

60 c/s

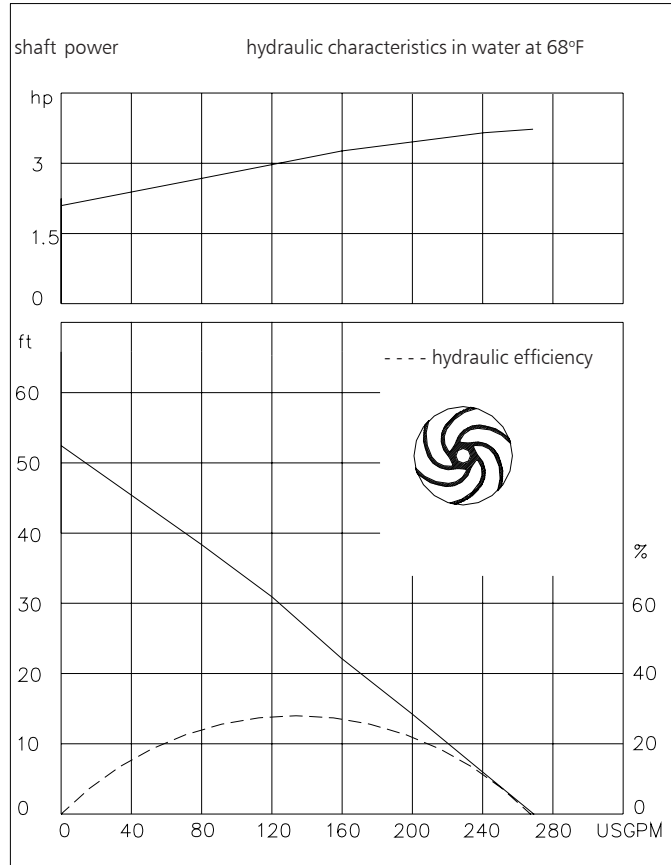
Vortex impeller pump in wear resistant Nihard 4 for reliable transport of highly abrasive solids in high concentrations.

#### Pump

- solids passage : 2"
- suction diameter : 2 1/2"
- discharge diameter : 2 1/2"
- impeller diameter : 115
- recommended minimum flow : 32 USGPM

#### Motor

- rated horse power : 4.0 hp
- rated electrical power : 4.0 kW
- rated kVA : 4.4 kVA
- mains : 60 c/s - 3 phase
- speed : 3500 rpm
- rated efficiency : 75 %
- rated power factor (cos phi) : 0.90
- degree of protection : IP 68
- isolation class : F (311 °F)
- max. water temperature : 104 °F  
(higher temperatures on request)
- standard cable length : 33 ft
- max. submersion depth : 66 ft



15.9 USGPM = 1 l/s    1 hp = 0.736 kW    1 ft = 0.3 m    1 lb = 0.45 kg

#### Materials

- motor housing : 1
- seal housing : 7
- volute : 7
- hose adapter : 1
- impeller : 7
  
- shaft : 3 5
- bolts : 4 5
  
- elastomers : 8+9 10
- electrical cable : 9
- seal lubrication : oil
- pump seal : silicon carbide-silicon carbide
- motor seal : carbon-ceramic
- primer : Alkyd primer
- top coating : Two component high-build polyurethane coating

1	cast iron	ASTM A-48 Class 35
2	sg cast iron	ASTM A445 Gr.60-46-18
3	stainless steel	AISI 431
4	stainless steel	AISI 304
5	stainless steel	AISI 316
6	bronze	ASTM B145 Gr. 4a
7	Nihard 4	ASTM A532, class I, type D
8	nitrile	(NBR)
9	neoprene	(CR)
10	viton	(FPM)

[www.ittwalphen.com](http://www.ittwalphen.com)

*Engineered for life*

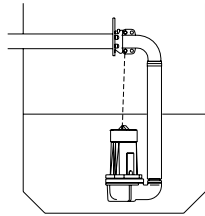


# ITT

## ROBOT PUMPS

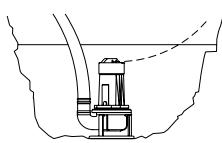
### Installation options

### RD2110BE



**H**

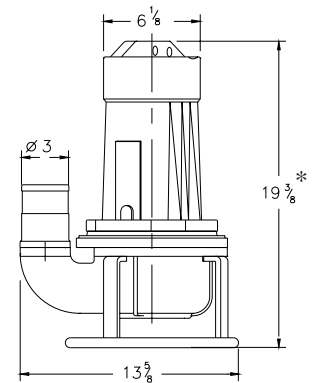
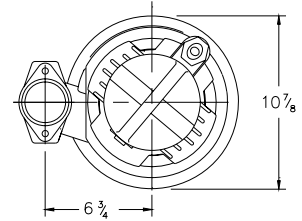
Header coupling:  
Type HK65 or HK80



**T**

Transportable:  
With support and  
3" hose adapter  
or NPT threaded  
connection

The motor is cooled by the surrounding water.



\* version P: 23 1/4

### Versions

**B Basic version**

**Weight**

95 lbs

**P FM approved version**

Certified according to:  
Class I, Division I, Groups C&D T4  
Standard with thermostats and  
waterdetector in motorhousing.

121 lbs

### Optional:

**Thermostatches** in motorwindings  
Standard for FM approved version

**Flexible protective sheathing for cable**  
(AISI 316)

**Water detector in motor and oil housing** (for explosion proof version only in oil housing with external cable)

### Motor connection details

voltage [V]*	rated current[A]	electrical cable size					
				with waterdetector and/or thermostatches		FM approved version	
		DOL-start	YD-start	DOL-start	YD-start	DOL-start	YD-start
220	11.7	1xAWG14/4	1xAWG16/7	1xAWG14/7	1xAWG16/10	1xAWG14/8	1xAWG14/12
380	6.8	1xAWG16/4	1xAWG16/7	1xAWG16/7	1xAWG16/10	1xAWG14/8	1xAWG14/12
440	5.9	1xAWG16/4	1xAWG16/7	1xAWG16/7	1xAWG16/10	1xAWG14/8	1xAWG14/12
460	5.6	1xAWG16/4	1xAWG16/7	1xAWG16/7	1xAWG16/10	1xAWG14/8	1xAWG14/12
575	4.5	1xAWG16/4	1xAWG16/7	1xAWG16/7	1xAWG16/10	1xAWG14/8	1xAWG14/12

starting current DOL-start : 4.6 x rated current

starting current YD-start : 1.5 x rated current

\* other voltages on request

We reserve the right to alter specifications without prior notice.