



# ITT

## ROBOT PUMPS

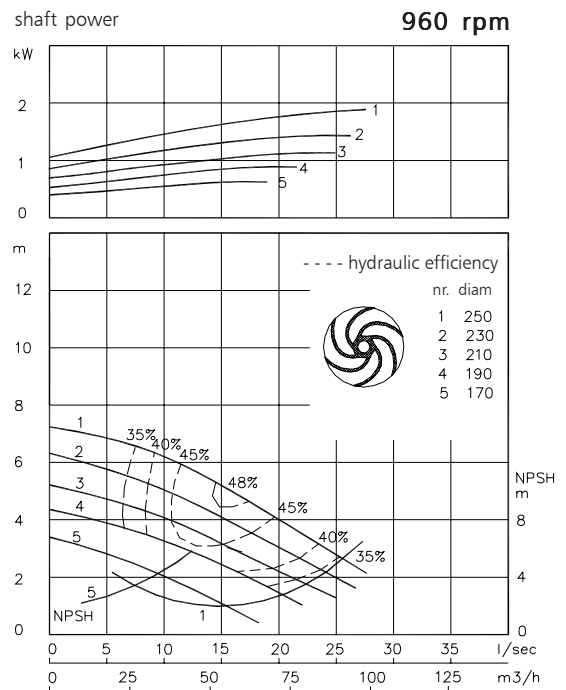
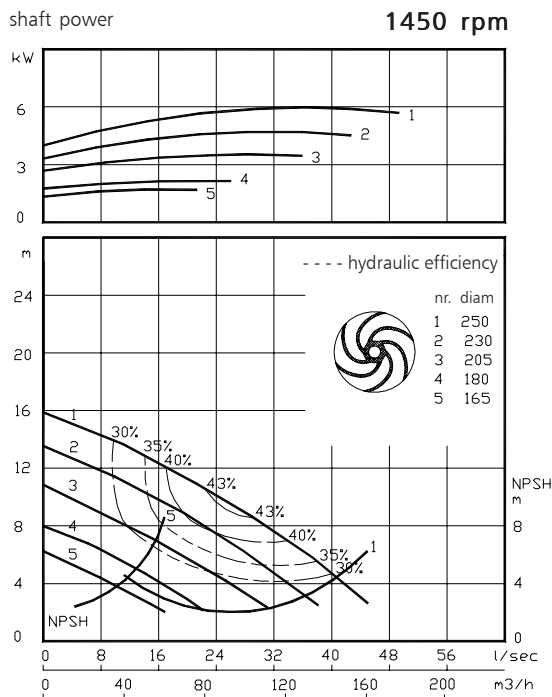
### Dry installed stainless steel vortex pump

### BW2040

The dry installed stainless steel vortex pumps are designed to pump a wide variety of solids contaminated liquids. They are used for sewage and other waste water applications. The pump can be used in aggressive applications pH = 1-13. Standard elastomers are in FPM (Viton).

solids passage	: 100 mm	<b>50 Hz</b>
discharge flange	: NW 100	
suction flange	: NW 100	
impeller diameter	: 252-170 mm	
recommended min. flow	: 6 l/s (21 m <sup>3</sup> /h)	

hydraulic characteristics in clean cold water according to ISO 9906 grade 2



Available electric motors Degree of protection IP55		
Class	kW	[rpm]
IEC 100L	1.5	960
	2.2	1450
	3.0	1450
IEC 112M	2.2	960
	4.0	1450
IEC 132S	3.0	960
	5.5	1450
IEC 132M	4.0	960
	5.5	960
	7.5	1450

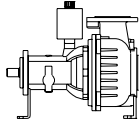
[www.robotpumps.com](http://www.robotpumps.com)

*Engineered for life*



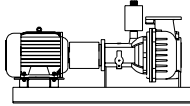
### Installation options

### BW2040



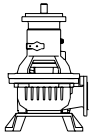
#### H

Horizontal installation:  
Bare shaft



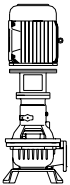
#### HM

Horizontal installation:  
With foundation plate  
and electric motor.



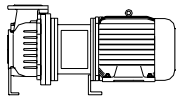
#### V

Vertical installation:  
Bare shaft



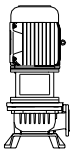
#### VM

Vertical installation:  
With support and electric  
motor.



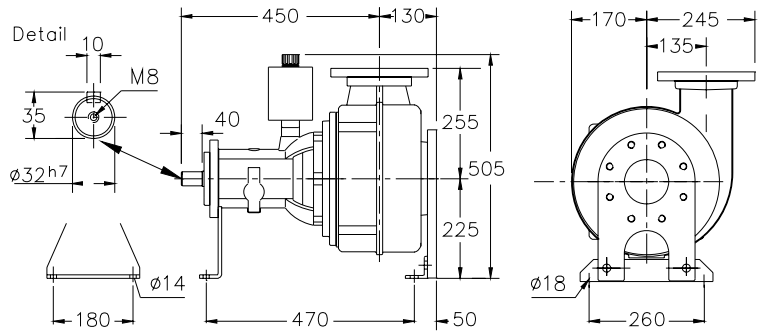
#### HS

Short coupled:  
Horizontal installation.



#### VS

Short coupled:  
Vertical installation.



#### Flange connections

	Standard	DIN 2501	PN10/PN16	p.c.d.	Number of holes
Discharge	NW 100	180	8x $\phi 19$		
Suction	NW 100	180	8x M16		

Weight (H version): 90 kg.

**Optional:**  
- seal flushing

*Other options and materials upon request*

### Materials

sealhousing	: 5
pump casing	: 5
impeller	: 5 6
pump shaft	: 5
bearing housing	: 1
bolts	: 4+5
elastomer	: 10
seal lubrication	: oil
pump seal	: silicon carbide-silicon carbide
secondary seal	: 1 radial lipseal
primer	: alkyd primer
top coating	: two components high-build polyurethane coating

1	cast iron	EN-GJL-250
2	sg cast iron	EN-GJS-400-15
3	stainless steel 431	X20 CrNi 17 2
4	stainless steel 304	X5 CrNi 18 10
5	stainless steel 316	X5 CrNiMo 17 12 2
6	stainless steel 329	X4 CrNiMoN 27 5 2
7	wear resistant sg iron	HB 500
8	nitrile	(NBR)
9	neoprene	(CR)
10	viton	(FPM)

We reserve the right to alter specifications without prior notice.