



ITT

ROBOT PUMPS

Vortex Pump

RW2110DA

60 c/s

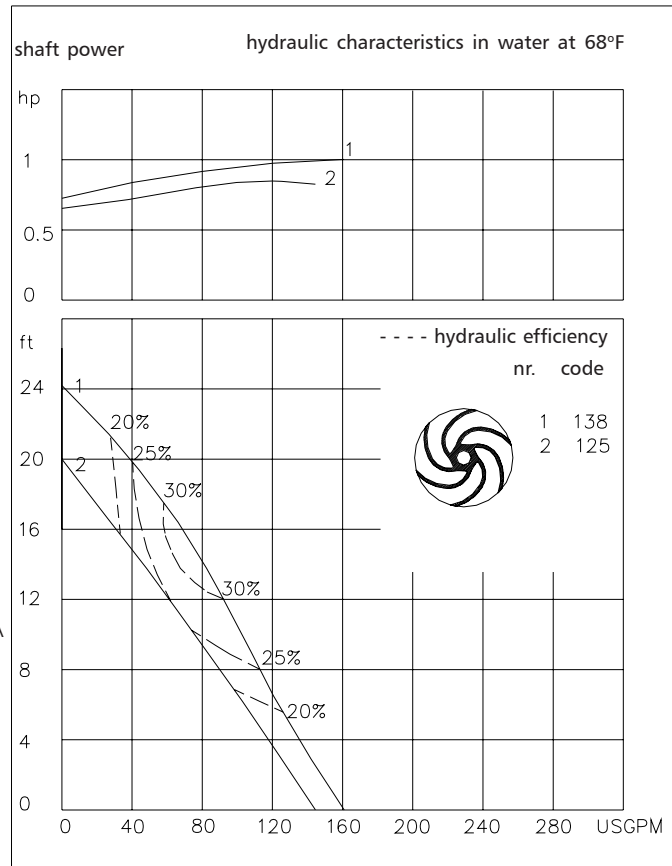
The vortex impeller pumps are designed to pump a wide variety of solids contaminated liquids in many applications. Vortex pumps are used for sewage and other waste water applications. Hydraulic components are available in special materials.

Pump

solids passage : 2"
 suction diameter : 2"
 discharge diameter : 2"
 impeller code : 138-125
 recommended minimum flow : 24 USGPM

Motor

	3 phase	1 phase
rated horse power	: 1.0 hp	1.0 hp
rated electrical power	: 1.1 kW	1.1 kW
rated kVA	: 1.4 kVA	1.1 kVA
mains	: 60 c/s	
speed	: 1750 rpm	
rated efficiency	: 68 %	68 %
rated power factor (cos phi)	: 0.78	0.99
degree of protection	: IP 68	
isolation class	: F (311 °F)	
max. water temperature	: 104 °F	
(higher temperatures on request)		
standard cable length	: 33 ft	
max. submersion depth	: 66 ft	



Pump curves are for cast iron only.

15.9 USGPM = 1 l/s 1 hp = 0.746 kW 1 ft = 0.3 m 1 lb = 0.45 kg

Materials

motor housing	: 1
seal housing	: 1 5
volute	: 1 5
impeller	: 2 5 6
shaft	: 3 5
bolts	: 4 5
elastomers	: 8+9 10
electrical cable	: 9
seal lubrication	: oil
pump seal	: silicon carbide-silicon carbide
motor seal	: carbon-ceramic
primer	: Alkyd primer
top coating	: Two component high-build polyurethane coating

1	cast iron	ASTM A-48 Cl.35
2	sg cast iron	ASTM A445 Gr.60-46-18
3	stainless steel	AISI 431
4	stainless steel	AISI 304
5	stainless steel	AISI 316
6	stainless steel	AISI 329
7	wear resistant sg iron	HB500
8	nitrile	(NBR)
9	neoprene	(CR)
10	viton	(FPM)

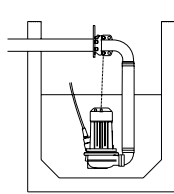
www.ittwalphen.com

Engineered for life

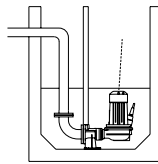


Installation options

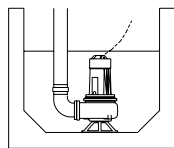
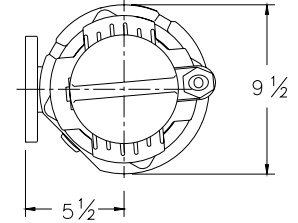
RW2110DA



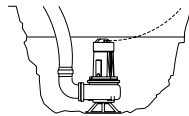
H
Header coupling:
Type HK65 or HK80



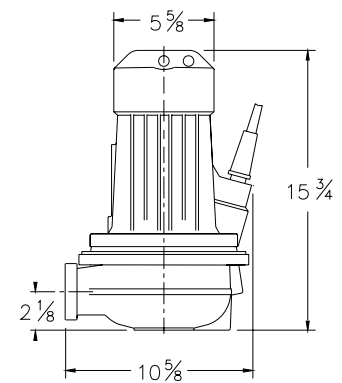
V
Guide bar coupling:
Type V50



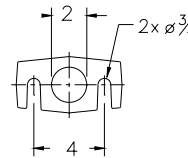
F
Freestanding:
With support and
2" or 3" hose adapter
or NPT threaded
connection



T
Transportable:
With support and
2" or 3" hose adapter
or NPT threaded
connection



The motor is cooled by the surrounding water.



Versions

B Basic version (3 phase)

Weight

79 lbs

M Basic version (1 phase)

83 lbs

Optional:

Thermoswitches in motorwindings standard for 1 phase motor

Flexible protective sheating for cable (AISI 316)

Water detector in motor and oil housing

Motor connection details: 1 phase motor

		electrical cable size					
voltage [V]*	rated current[A]	with thermoswitches					
			condensator				
115	10.5	1xAWG 14/4	50µF / 450V				
220	5.5	1xAWG 16/4	25µF / 450V				

starting current : 2.5 x rated current

* other voltages on request

Motor connection details 3 phase motor

		number of cables x number of cores x cross section [mm ²]					
voltage [V]*	rated current[A]			with waterdetector and/or thermoswitches			
		DOL-start		DOL-start			
220	3.7	1xAWG16/4		1xAWG16/7			
380	2.1	1xAWG16/4		1xAWG16/7			
440	1.9	1xAWG16/4		1xAWG16/7			
460	1.8	1xAWG16/4		1xAWG16/7			
575	1.4	1xAWG16/4		1xAWG16/7			

starting current DOL-start : 3.7 x rated current

* other voltages on request

We reserve the right to alter specifications without prior notice.