



ITT

ROBOT PUMPS

Slurry Pump

RD4021BR

50 Hz

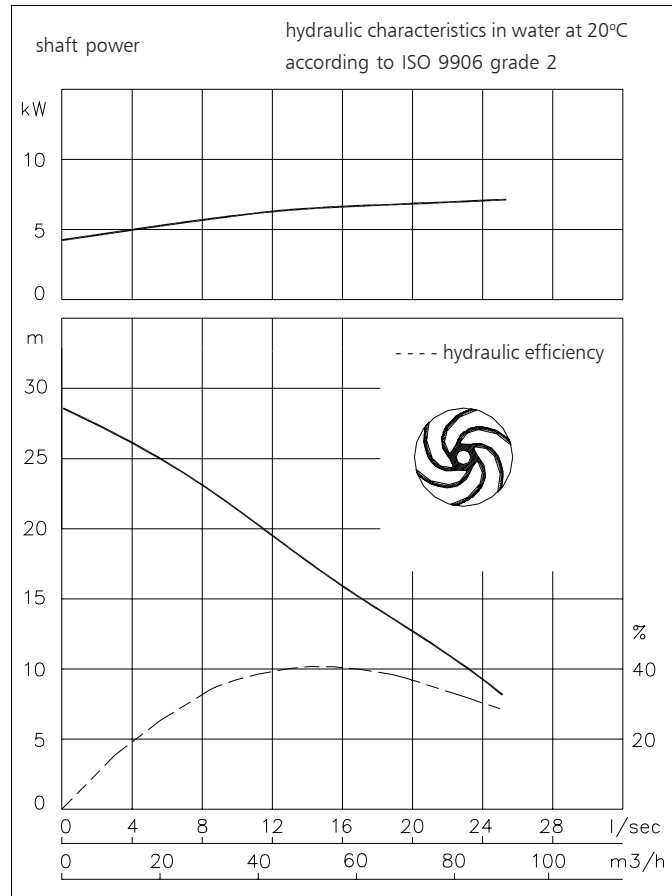
Vortex impeller pump in wear resistant Nihard 4 for reliable transport of highly abrasive solids in high concentrations.

Pump

solids passage	: 65 mm
suction diameter	: 72 mm
discharge diameter	: 67 mm
impeller diameter	: 170 mm
recommended minimum flow	: 3.5 l/s (13 m ³ /h)

Motor

rated shaft power	: 9.0 kW
rated electrical power	: 10.6 kW
mains	: 50 Hz - 3 phase
nominal speed	: 2900 rpm
rated efficiency	: 85 %
rated power factor (cos phi)	: 0.89
degree of protection	: IP 68
isolation class	: F (155 °C)
max. water temperature	: 40 °C
(higher temperatures on request)	
standard cable length	: 10 m



Materials

motor housing	: 1
seal housing	: 7
volute	: 7
hose/flange adapter	: 7
impeller	: 7
shaft	: 3 5
bolts	: 4 5
elastomers	: 8+9 10
electrical cable	: 9
seal lubrication	: oil
pump seal	: silicon carbide-silicon carbide
motor seal	: carbon-ceramic
primer	: Alkyd primer
top coating	: Two component high-build polyurethane coating

1	cast iron	EN-GJL-250
2	sg cast iron	EN-GJS-400-15
3	stainless steel 431	X20 CrNi 17 2
4	stainless steel 304	X5 CrNi 18 10
5	stainless steel 316	X5 CrNiMo 17 12 2
6	stainless steel 329	X4 CrNiMoN 27 5 2
7	Nihard 4	G-X300CrNiSi 9 5 2
8	nitrile	(NBR)
9	neoprene	(CR)
10	viton	(FPM)

www.ittwwwalphen.com

Engineered for life

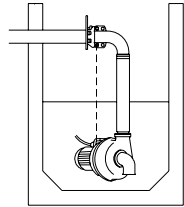


ITT

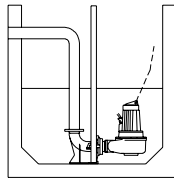
ROBOT PUMPS

Installation options

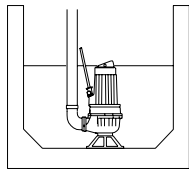
RD4021BR



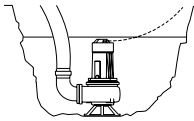
H
Header coupling:
Type HK80 with



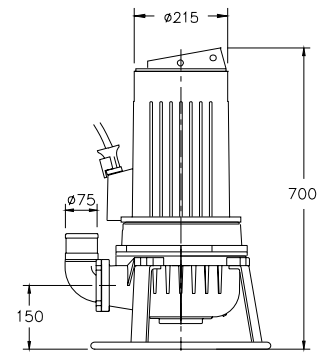
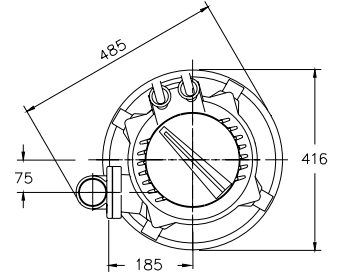
V
Guide bar coupling:
Type V80



F
Freestanding:
With support and
75mm hose adapter



T
Transportable:
With support and
75mm hose adapter



Without cooling system the motor is cooled by the surrounding water.

Version

B Basic

Standard with thermostiches

Weight:

117 kg

E Explosion proof version

Certified according to: II 2 G Ex de IIB c T4

142 kg

Optional:

Thermostiches in motorwindings

Flexible protective sheating for cable
(AISI 316)

Water detector in motor and oil housing

Motor connection details

		number of cables x number of cores x cross section [mm ²]					
voltage [V]*	rated current[A]			with waterdetector and/or thermostiches		explosion proof version	
		DOL-start	YD-start	DOL-start	YD-start	DOL-start	YD-start
220	31.2	1x4x6	1x7x2.5	1x4x6+1x4x2.5	1x7x2.5+1x4x2.5	1x4x6+1x4x2.5	1x7x2.5+1x4x2.5
380	18.1	1x4x2.5	1x7x1.5	1x7x2.5	1x10x1.5	1x7x2.5	1x7x2.5+1x4x2.5
400	17.2	1x4x2.5	1x7x1.5	1x7x2.5	1x10x1.5	1x7x2.5	1x7x2.5+1x4x2.5
415	16.6	1x4x2.5	1x7x1.5	1x7x2.5	1x10x1.5	1x7x2.5	1x7x2.5+1x4x2.5
500	13.7	1x4x2.5	1x7x1.5	1x7x2.5	1x10x1.5	1x7x2.5	1x7x2.5+1x4x2.5

starting current DOL-start : 6.3 x rated current

starting current YD-start : 2.1 x rated current

* other volages on request

We reserve the right to alter specifications without prior notice.