



ITT

ROBOT PUMPS

Slurry Pump

RD4021BR

60 c/s

Vortex impeller pump in wear resistant Nihard 4 for reliable transport of highly abrasive solids in high concentrations.

Pump

solids passage : 2 1/2"

suction diameter : 2 7/8"

discharge diameter : 2 1/2"

impeller diameter : 155

recommended minimum flow : 32 USGPM

Motor

rated horse power : 14.0 hp

rated electrical power : 12.2 kW

rated kVA : 14.7 kW

mains : 60 c/s - 3 phase

speed : 3500 rpm

rated efficiency : 82 %

rated power factor (cos phi) : 0.90

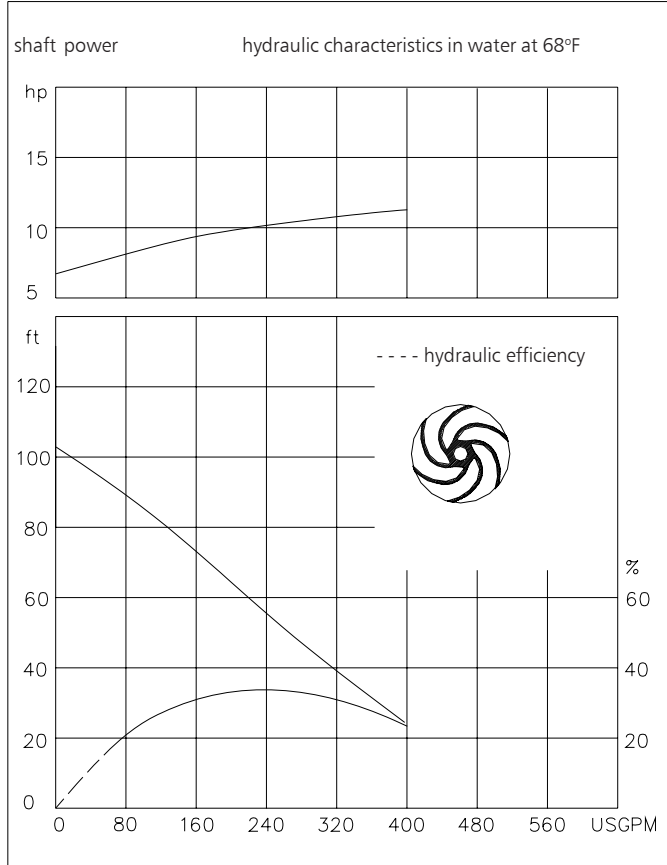
degree of protection : IP 68

isolation class : F (311 °F)

max. water temperature : 104 °F
(higher temperatures on request)

standard cable length : 33 ft

max. submersion depth : 66 ft



15.9 USGPM = 1 l/s 1 hp = 0.736 kW 1 ft = 0.3 m 1 lb = 0.45 kg

Materials

motor housing : 1

seal housing : 7

volute : 7

hose adapter : 7

impeller : 7

shaft : 3 5

bolts : 4 5

elastomers : 7+8 10

electrical cable : 8

seal lubrication : oil

pump seal : silicon carbide-silicon carbide

motor seal : carbon-ceramic

primer : Alkyd primer

top coating : Two component high-build polyurethane coating

1	cast iron	ASTM A-48 Class 35
2	sg cast iron	ASTM A445 Gr.60-46-18
3	stainless steel	AISI 431
4	stainless steel	AISI 304
5	stainless steel	AISI 316
6	bronze	ASTM B145 Gr. 4a
7	Nihard 4	ASTM A532, class I, type D
8	nitrile	(NBR)
9	neoprene	(CR)
10	viton	(FPM)

www.ittwwwalphen.com

Engineered for life

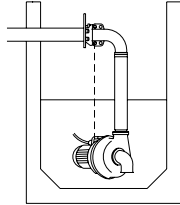


ITT

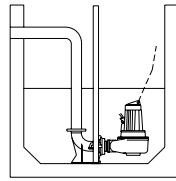
ROBOT PUMPS

Installation options

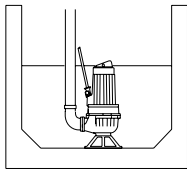
RD4021BR



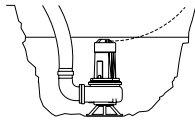
H
Header coupling:
Type HK80



V
Guide bar coupling:
Type V80

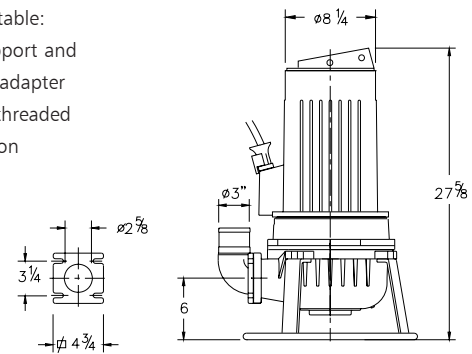
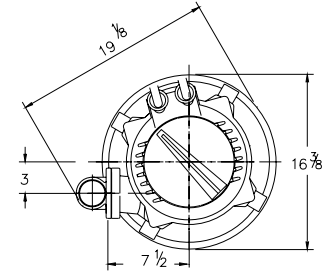


F
Freestanding:
With support and
3" hose adapter
or NPT threaded
connection



T
Transportable:
With support and
3" hose adapter
or NPT threaded
connection

Without cooling system the motor is cooled by the surrounding water.



Versions

B Basic version

Weight

258 lbs

Optional:

Thermoswitches in motor windings

Flexible protective sheathing for cable
(AISI 316)

Water detector in motor and oil housing

Motor connection details

voltage [V]*	rated current [A]	electrical cable size			
		without water detector and/or thermoswitches		with water detector and/or thermoswitches	
		DOL-start	YD-start	DOL-start	YD-start
220	36.2	2xAWG 8/4	2xAWG 10/4	-	-
380	21.0	1xAWG 10/4	1xAWG 14/7	1xAWG 10/4+1xAWG 14/4	1xAWG 14/7+1xAWG 14/4
440	18.1	1xAWG 12/4	1xAWG 16/7	1xAWG 12/4+1xAWG 14/4	1xAWG 14/7+1xAWG 14/4
460	17.3	1xAWG 12/4	1xAWG 16/7	1xAWG 12/4+1xAWG 14/4	1xAWG 14/7+1xAWG 14/4
575	13.8	1xAWG 14/4	1xAWG 16/7	1xAWG 14/7	11xAWG 14/7+1xAWG 14/4

starting current DOL-start : 6.3 x rated current

starting current YD-start : 2.1 x rated current

* other voltages on request

We reserve the right to alter specifications without prior notice.