



ITT

ROBOT PUMPS

Dry installed vortex pump

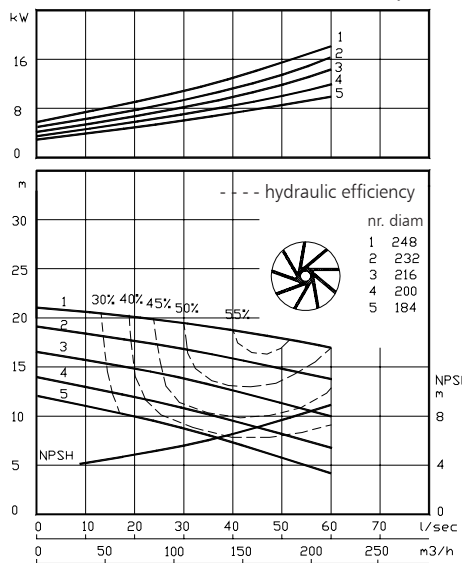
BW3000

The dry installed vortex pumps are designed to pump a wide variety of solids contaminated liquids. They are used for sewage and other waste water applications. These pumps are designed for a stationary dry installation of pump and motor.

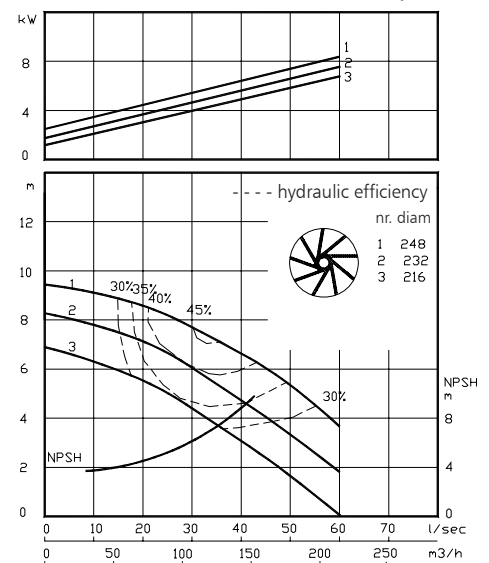
solids passage : 80 mm
 discharge flange : NW 100
 suction flange : NW 100
 impeller diameter : 248-152 mm
 recommended min. flow : 6 l/s (21 m³/h) **50 Hz**

hydraulic characteristics in clean cold water according to ISO 9906 grade 2

shaft power **1450 rpm**

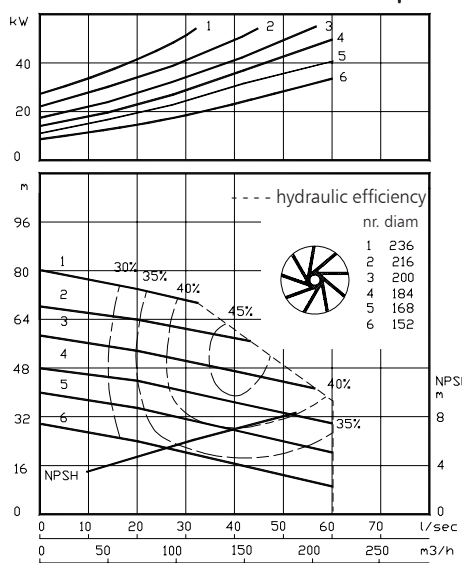


shaft power **960 rpm**

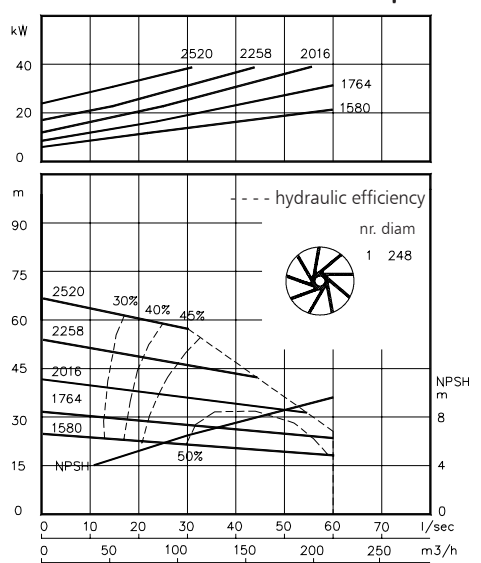


Available electric motors		
Degree of protection IP55		
Class	kW	[rpm]
IEC 132S	3.0	960
IEC 132M	4.0	960
	5.5	960
	7.5	1450
IEC 160M	7.5	960
	11.0	1450
	11.0	2900
	15.0	2900
	4.0	1450
IEC 160L	11.0	960
	15.0	1450
	18.5	2900
IEC 180M	18.5	1450
	22	1450
IEC 200L	30	2900
	37	2900
IEC 225M	45	2900
IEC 250M	55	2900

shaft power **2900 rpm**



shaft power **1580-2520 rpm**



www.robotpumps.com

Engineered for life

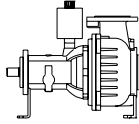


ITT

ROBOT PUMPS

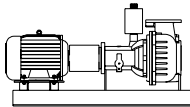
Installation options

BW3000



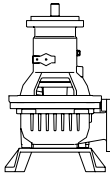
H

Horizontal installation:
Bare shaft.



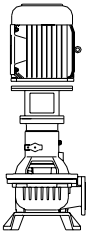
HM

Horizontal installation:
With foundation plate
and electric motor.



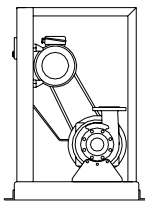
V

Vertical installation:
Bare shaft.



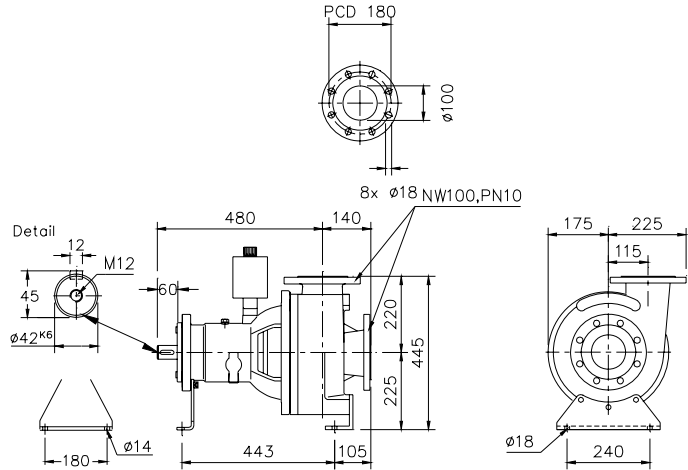
VM

Vertical installation:
With support and electric
motor.



K

V-belt driven:
Frame construction.
For motors IEC100L-200L.



Flange connections

Standard

DIN 2501 PN10/PN16

p.c.d. Number of holes

Discharge	NW 100	180	8x ø19
Suction	NW 100	180	8x ø19

Weight (H version): 110 kg.

Optional:

- seal flushing

Other options and materials upon request

Materials

sealhousing	: 1
pump casing	: 1
impeller	: 2
pump shaft	: 3 5
bearing housing	: 1
bolts	: 4 5
elastomer	: 8+9 10
seal lubrication	: oil
pump seal	: silicon carbide-silicon carbide
secondary seal	: 1 radial lipseal
primer	: alkyd primer
top coating	: two components high-build polyurethane coating

1	cast iron	EN-GJL-250
2	sg cast iron	EN-GJS-400-15
3	stainless steel 431	X20 CrNi 17 2
4	stainless steel 304	X5 CrNi 18 10
5	stainless steel 316	X5 CrNiMo 17 12 2
6	stainless steel 329	X4 CrNiMoN 27 5 2
7	wear resistant sg iron	HB 500
8	nitrile	(NBR)
9	neoprene	(CR)
10	viton	(FPM)

We reserve the right to alter specifications without prior notice.