



# ITT

## ROBOT PUMPS

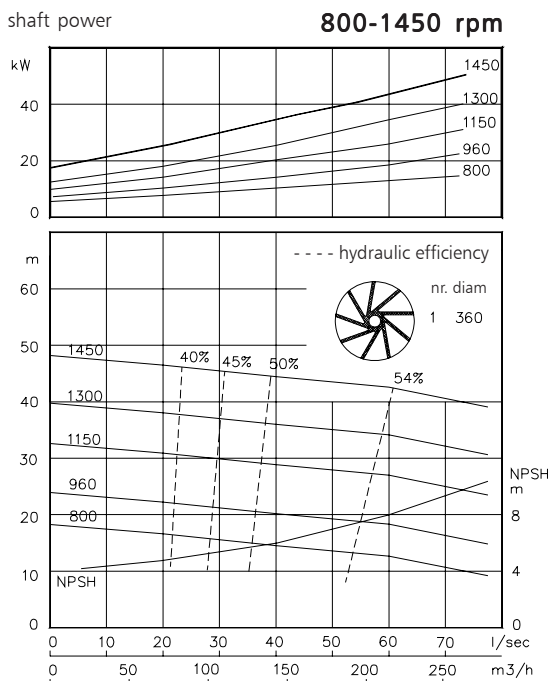
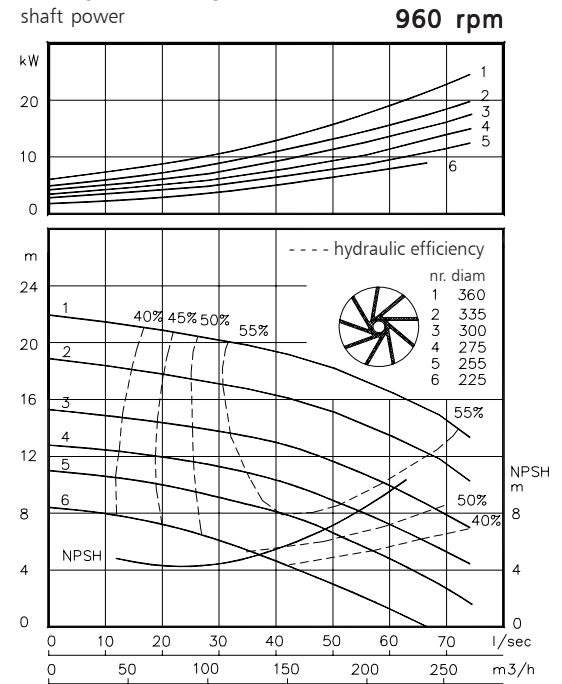
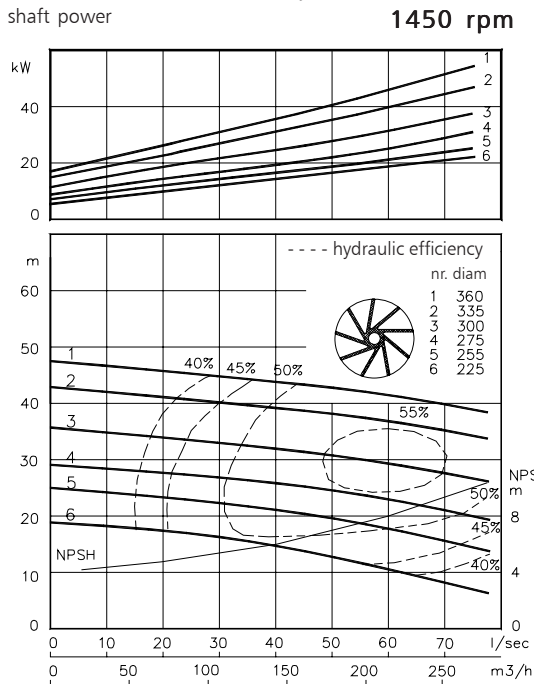
### Dry installed vortex pump

### BW6041

The dry installed vortex pumps are designed to pump a wide variety of solids contaminated liquids. They are used for sewage and other waste water applications. These pumps are designed for a stationary dry installation of pump and motor.

solids passage : 100 mm **50 Hz**  
 discharge flange : NW 100  
 suction flange : NW 125  
 impeller diameter : 360-225 mm  
 recommended min. flow : 6 l/s (21 m<sup>3</sup>/h)

hydraulic characteristics in clean cold water according to ISO 9906 grade 2



Available electric motors		
Degree of protection IP55		
Class	kW	[rpm]
IEC 160L	11	960
	15	1450
IEC 180M	18.5	1450
	15	960
IEC 200L	22	1450
	18.5	960
	22	960
IEC 225S	30	1450
	37	1450
IEC 225M	45	1450

[www.ittwwwalphen.com](http://www.ittwwwalphen.com)

*Engineered for life*

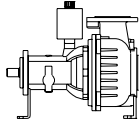


# ITT

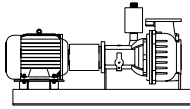
## ROBOT PUMPS

### Installation options

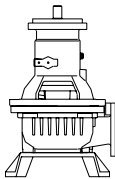
### BW6041

**H**

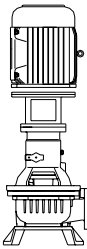
Horizontal installation:  
Bare shaft

**HM**

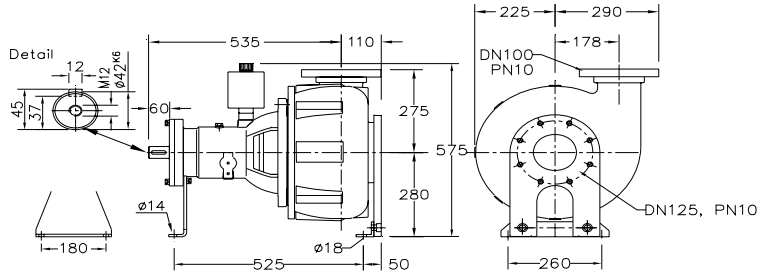
Horizontal installation:  
With foundation plate  
and electric motor.

**V**

Vertical installation:  
Bare shaft

**VM**

Vertical installation:  
With support and electric  
motor.

**Flange connections**

Standard

DIN 2501 PN10/PN16

p.c.d.

Number of holes

Discharge NW 100

180

8x ø19

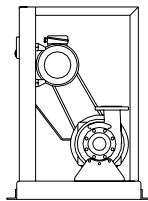
Suction NW 125

210

8x M16

Weight (H version):

160 kg.

**K**

V-belt driven:  
Frame construction.  
For motors IEC100L-200L.

**Optional:****- seal flushing***Other options and materials upon request***Materials**

sealhousing	:	1
pump casing	:	1
impeller	:	2 5
pump shaft	:	3 5
bearing housing	:	1
bolts	:	4 5
elastomer	:	8+9 10
seal lubrication	:	oil
pump seal	:	silicon carbide-ceramic
secondary seal	:	carbon - ceramic
primer	:	alkyd primer
top coating	:	two components high-build polyurethane coating

1	cast iron	EN-GJL-250
2	sg cast iron	EN-GJS-400-15
3	stainless steel 431	X20 CrNi 17 2
4	stainless steel 304	X5 CrNi 18 10
5	stainless steel 316	X5 CrNiMo 17 12 2
6	stainless steel 329	X4 CrNiMoN 27 5 2
7	wear resistant sg iron	HB 500
8	nitrile	(NBR)
9	neoprene	(CR)
10	viton	(FPM)

We reserve the right to alter specifications without prior notice.