



ITT

ROBOT PUMPS

Dry installed vortex pump

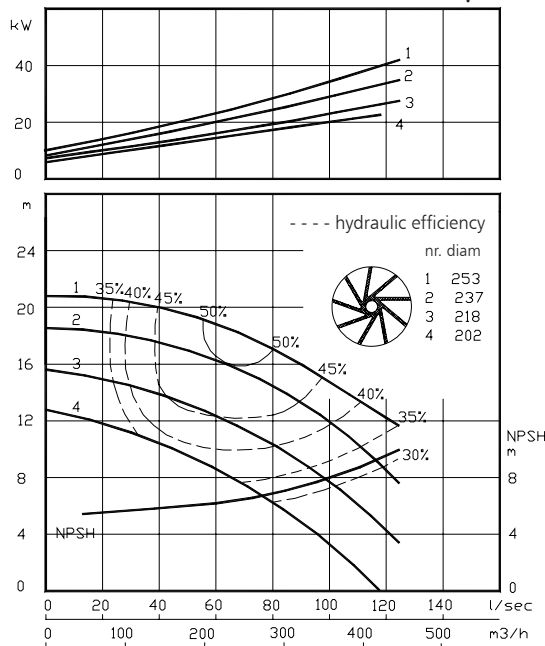
BW5000

The dry installed vortex pumps are designed to pump a wide variety of solids contaminated liquids. They are used for sewage and other waste water applications. These pumps are designed for a stationary dry installation of pump and motor.

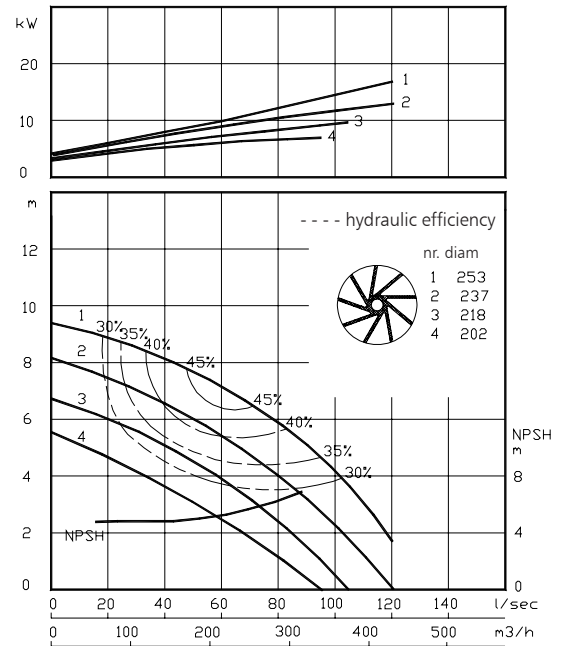
solids passage : 125 mm **50 Hz**
 discharge flange : NW 150
 suction flange : NW 150
 impeller diameter : 253-202 mm
 recommended min. flow : 13 l/s (47 m³/h)

hydraulic characteristics in clean cold water according to ISO 9906 grade 2

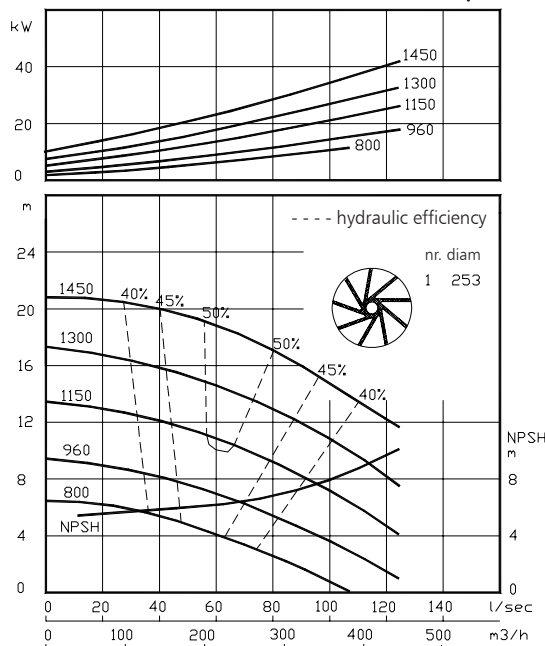
shaft power **1450 rpm**



shaft power **960 rpm**



shaft power **800-1450 rpm**



| Available electric motors Degree of protection IP55 | | |
|--|------|-------|
| Class | kW | [rpm] |
| IEC 160L | 11 | 960 |
| | 15 | 1450 |
| IEC 180M | 18.5 | 1450 |
| | 15 | 960 |
| IEC 200L | 18.5 | 960 |
| | 22 | 960 |
| | 30 | 1450 |
| IEC 225S | 37 | 1450 |
| IEC 225M | 45 | 1450 |

www.itwwwalphen.com

Engineered for life

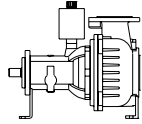


ITT

ROBOT PUMPS

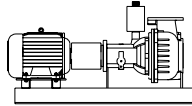
Installation options

BW5000



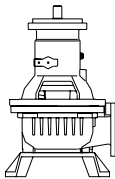
H

Horizontal installation:
Bare shaft



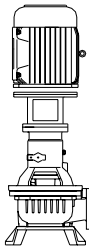
HM

Horizontal installation:
With foundation plate
and electric motor.



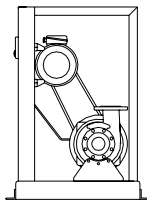
V

Vertical installation:
Bare shaft



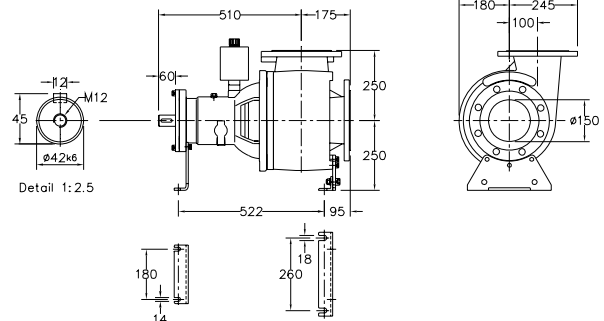
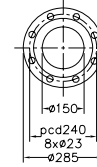
VM

Vertical installation:
With support and electric
motor.



K

V-belt driven:
Frame construction.
For motors IEC100L-200L.



Flange connections

Standard

DIN 2501 PN10/PN16

p.c.d.

Number x holes

Discharge NW 150 240 8x Ø23

Suction NW 150 240 8x Ø23

Weight (H version): 135 kg.

Optional:

- seal flushing

Other options and materials upon request

Materials

| | | |
|------------------|---|--|
| sealhousing | : | 1 |
| pump casing | : | 1 |
| impeller | : | 2 |
| pump shaft | : | 3 5 |
| bearing housing | : | 1 |
| bolts | : | 4 5 |
| elastomer | : | 8+9 10 |
| seal lubrication | : | oil |
| pump seal | : | silicon carbide-silicon carbide |
| secondary seal | : | 1 radial lipseal |
| primer | : | alkyd primer |
| top coating | : | two components high-build polyurethane coating |

| | | |
|----|------------------------|-------------------|
| 1 | cast iron | EN-GJL-250 |
| 2 | sg cast iron | EN-GJS-400-15 |
| 3 | stainless steel 431 | X20 CrNi 17 2 |
| 4 | stainless steel 304 | X5 CrNi 18 10 |
| 5 | stainless steel 316 | X5 CrNiMo 17 12 2 |
| 6 | stainless steel 329 | X4 CrNiMoN 27 5 2 |
| 7 | wear resistant sg iron | HB 500 |
| 8 | nitrile | (NBR) |
| 9 | neoprene | (CR) |
| 10 | viton | (FPM) |

We reserve the right to alter specifications without prior notice.