



ITT

ROBOT PUMPS

Dry installed vortex pump

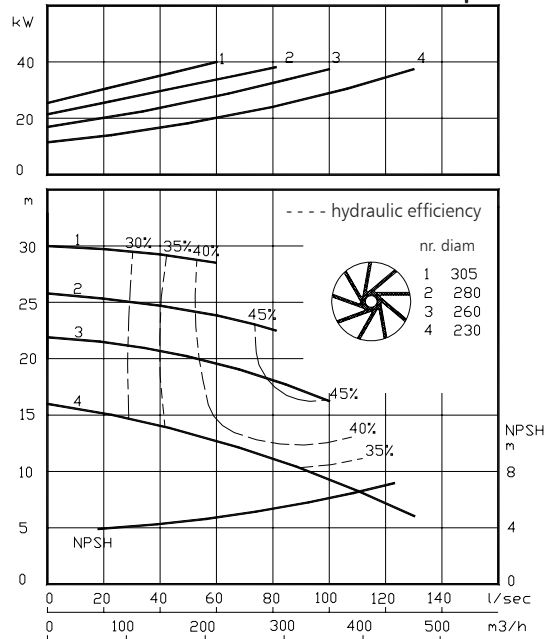
BW6000

The dry installed vortex pumps are designed to pump a wide variety of solids contaminated liquids. They are used for sewage and other waste water applications. These pumps are designed for a stationary dry installation of pump and motor.

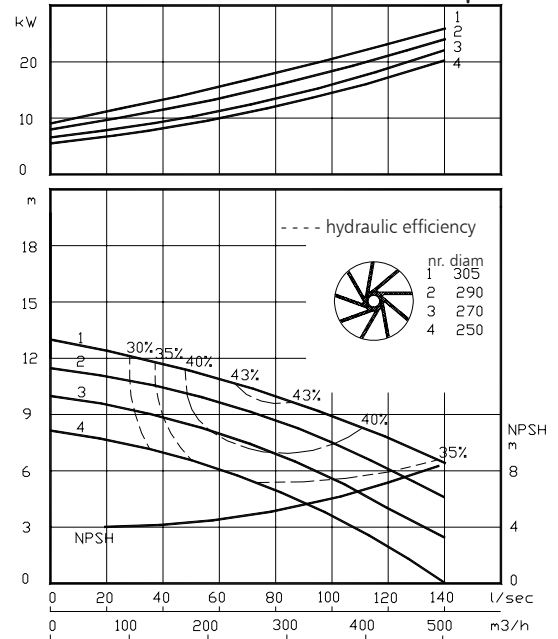
solids passage : 150 mm **50 Hz**
 discharge flange : NW 200
 suction flange : NW 200
 impeller diameter : 305-230 mm
 recommended min. flow : 23 l/s (84 m³/h)

hydraulic characteristics in clean cold water according to ISO 9906 grade 2

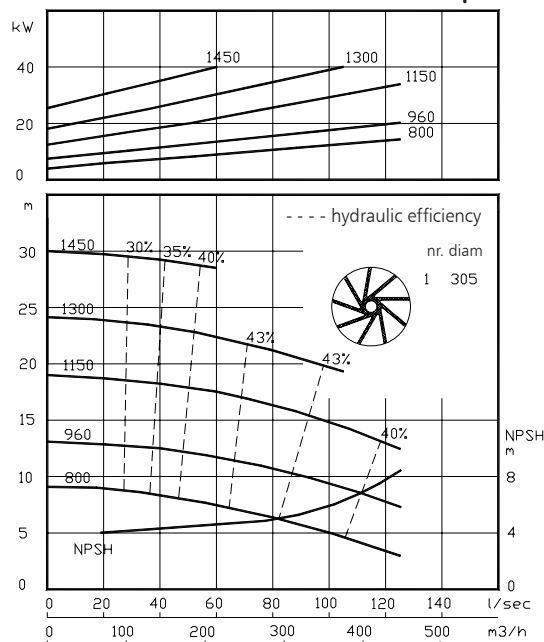
shaft power **1450 rpm**



shaft power **960 rpm**



shaft power **800-1450 rpm**



Available electric motors
 Degree of protection IP55

Class	kW	[rpm]
IEC 160L	11	960
	15	1450
IEC 180M	18.5	1450
	15	960
IEC 180L	22	1450
	18.5	960
IEC 200L	22	960
	30	1450
IEC 225S	37	1450
IEC 225M	45	1450

www.robotpumps.com

Engineered for life



ITT

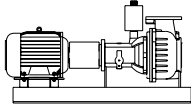
ROBOT PUMPS

Installation options

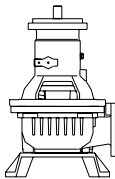
BW6000

**H**

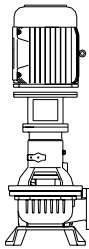
Horizontal installation:
Bare shaft

**HM**

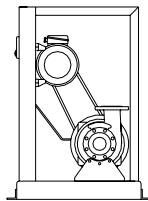
Horizontal installation:
With foundation plate
and electric motor.

**V**

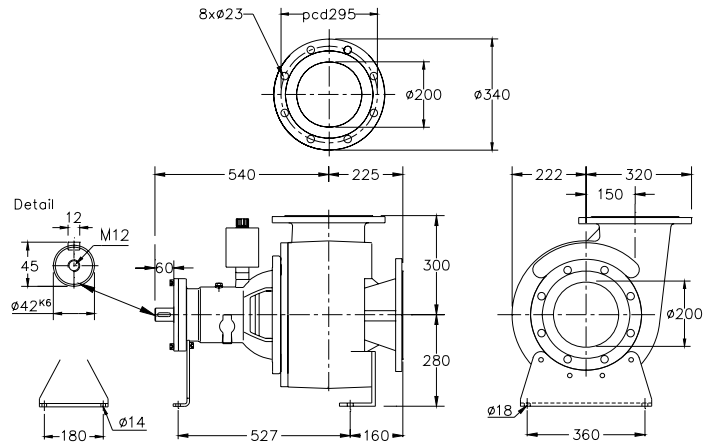
Vertical installation:
Bare shaft

**VM**

Vertical installation:
With support and electric
motor.

**K**

V-belt driven:
Frame construction.
For motors IEC100L-200L.



Flange connections

		Standard	
		DIN 2501 PN10/PN16	
		p.c.d.	Number of holes
Discharge	NW 200	295	8x ø23
Suction	NW 200	295	8x ø23

Weight (H version): 160 kg.

Optional:
- seal flushing

Other options and materials upon request

Materials

sealhousing	: 1
pump casing	: 1
impeller	: 2
pump shaft	: 3 5
bearing housing	: 1
bolts	: 4 5
elastomer	: 8+9 10
seal lubrication	: oil
pump seal	: silicon carbide-silicon carbide
secondary seal	: 1 radial lipseal
primer	: alkyd primer
top coating	: two components high-build polyurethane coating

1	cast iron	EN-GJL-250
2	sg cast iron	EN-GJS-400-15
3	stainless steel 431	X20 CrNi 17 2
4	stainless steel 304	X5 CrNi 18 10
5	stainless steel 316	X5 CrNiMo 17 12 2
6	stainless steel 329	X4 CrNiMoN 27 5 2
7	wear resistant sg iron	HB 500
8	nitrile	(NBR)
9	neoprene	(CR)
10	viton	(FPM)

We reserve the right to alter specifications without prior notice.