



# ITT

## ROBOT PUMPS

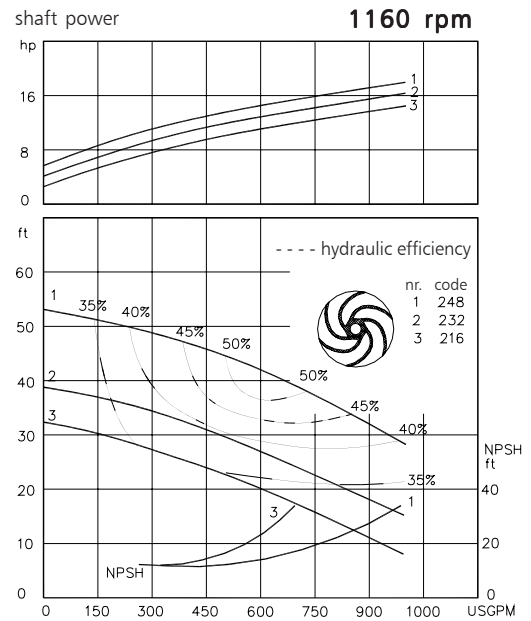
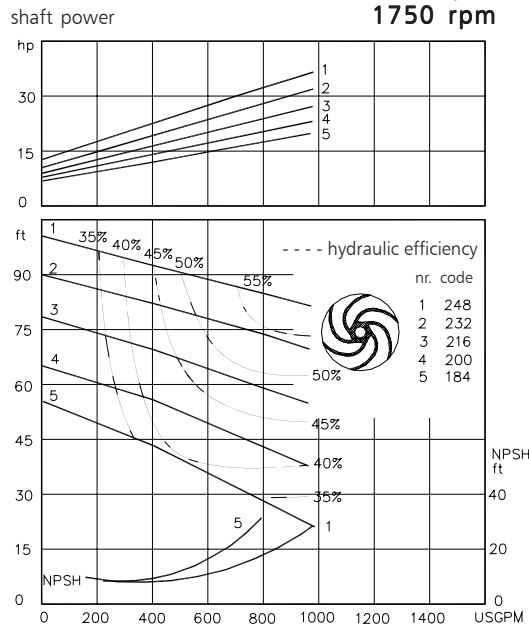
### Dry Installed Vortex Pump

### BW3000

The dry installed vortex pumps are designed to pump a wide variety of solids contaminated liquids. They are used for sewage and other waste water applications. These pumps are designed for a stationary dry installation of pump and motor.

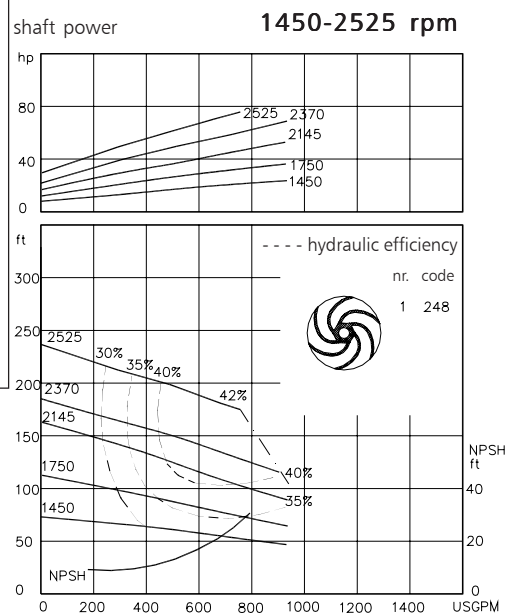
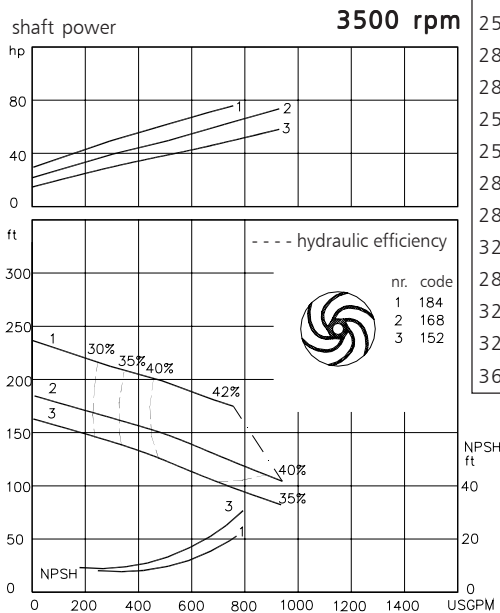
solids passage : 3" **60 c/s**  
 discharge flange : 4"  
 suction flange : 4"  
 impeller code : 248-184  
 recommended minium flow : 95 USGPM

hydraulic characteristics in water at 68°F



Available electric motors  
 Degree of protection IP55

NEMA	[hp]	[rpm]
256T	10	1160
284T	15	1160
286T	20	1160
254T	15	1750
256T	20	1750
284T	25	1750
286T	30	1750
324T	40	1750
286T	40	3500
324T	50	3500
326T	60	3500
364T	75	3500



[www.ittwwwalphen.com](http://www.ittwwwalphen.com)

*Engineered for life*

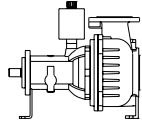


# ITT

## ROBOT PUMPS

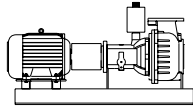
### Installation options

### BW3000



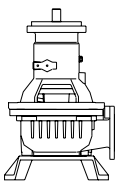
**H**

Horizontal installation:  
Bare shaft



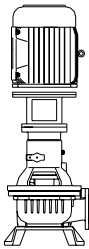
**HM**

Horizontal installation:  
With foundation plate  
and electric motor.



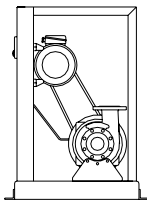
**V**

Vertical installation:  
Bare shaft



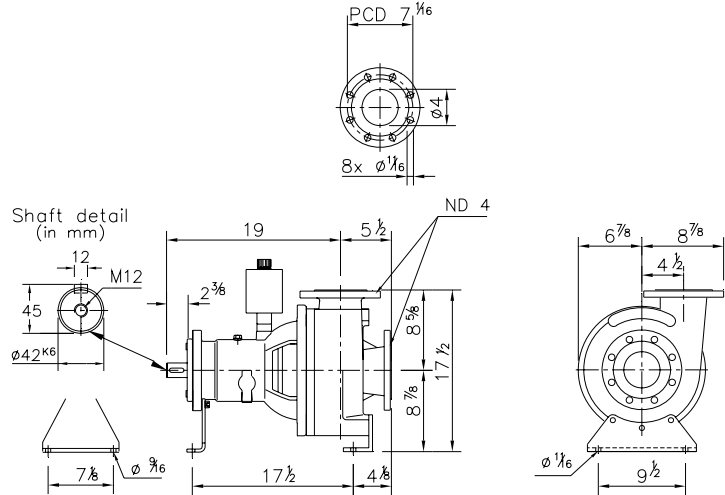
**VM**

Vertical installation:  
With support and electric  
motor.



**K**

V-belt driven:  
Frame construction.  
For motors NEMA  
145T - 324T.



#### Flange connections

Standard

		p.c.d.	Number x holes
Discharge	ND 4	$7\frac{1}{2}$	$8 \times \phi \frac{3}{4}$
Suction	ND 4	$7\frac{1}{2}$	$8 \times \phi \frac{3}{4}$

Weight (H version): 360 lbs

#### Optional:

- seal flushing

*Other options and materials upon request*

### Materials

sealhousing	: 1
pump casing	: 1
impeller	: 2
pump shaft	: 3 5
bearing housing	: 1
bolts	: 4 5
elastomer	: 8+9 10
seal lubrication	: oil
pump seal	: silicon carbide-silicon carbide
secondary seal	: 1 radial lipseal
primer	: Alkyd primer
top coating	: Two component high-build polyurethane coating

1	cast iron	ASTM A-48 Cl.35
2	sg cast iron	ASTM A445 Gr.60-46-18
3	stainless steel	AISI 431
4	stainless steel	AISI 304
5	stainless steel	AISI 316
6	stainless steel	AISI 329
7	wear resistant sg iron	HB500
8	nitrile	(NBR)
9	neoprene	(CR)
10	viton	(FPM)

We reserve the right to alter specifications without prior notice.