



# ITT

## ROBOT PUMPS

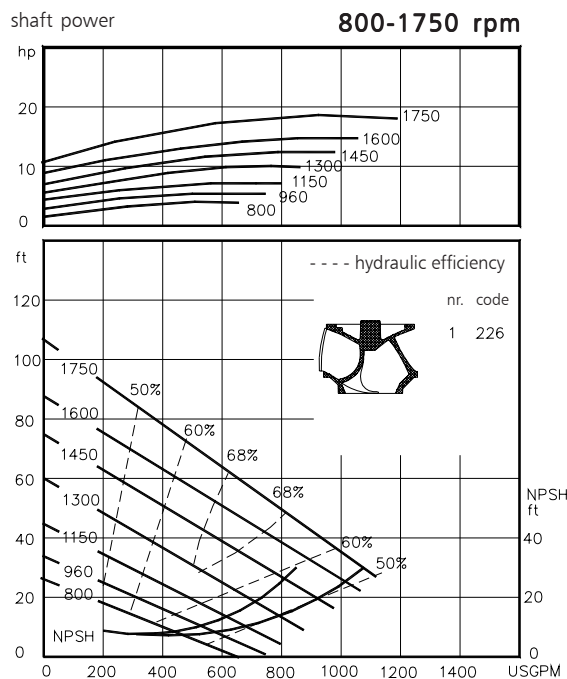
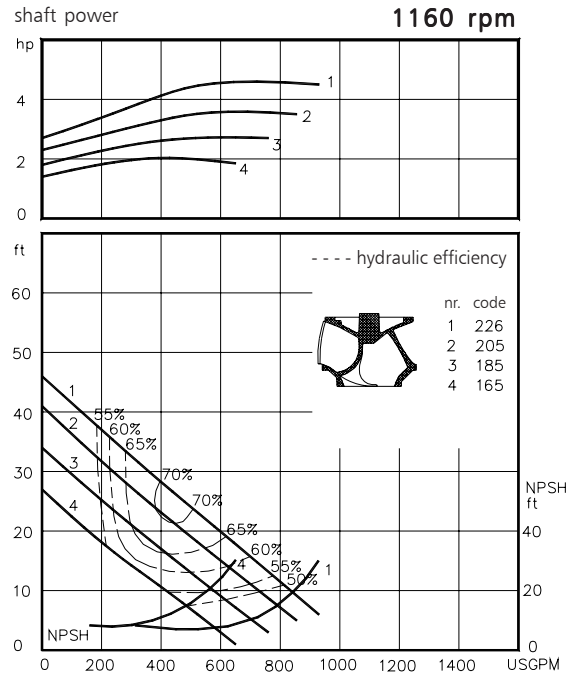
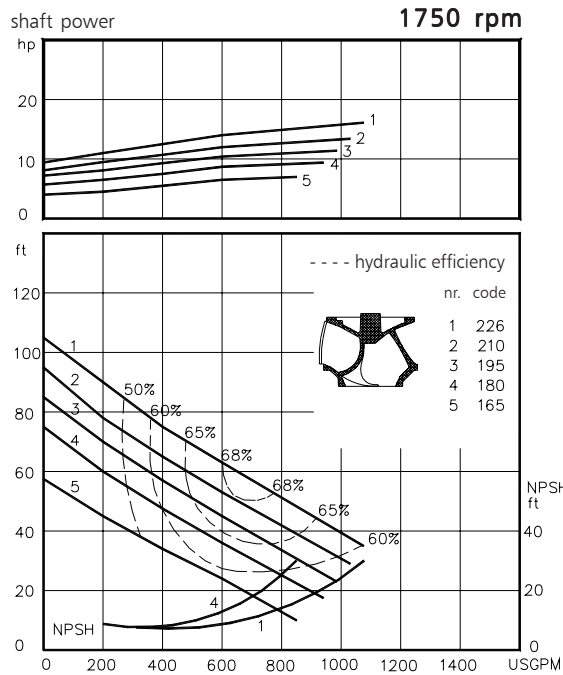
### BT - Turbotex Pump

### BT4040

BT pumps are designed to pump sewage and other kinds of waste water in many different applications. These pumps are equally suitable for clean water or lightly contaminated liquids. They are designed for a stationary dry installation of pump and motor.

solids passage : 4"  
 discharge flange : 4"  
 suction flange : 5"  
 impeller code : 226-165  
 recommended minium flow : 95 USGPM

hydraulic characteristics in water at 68°F



Available electric motors Degree of protection IP55		
NEMA	[hp]	[rpm]
184T	2.0	1160
213T	3.0	1160
215T	5.0	1160
184T	5.0	1750
213T	7.5	1750
215T	10	1750
254T	15	1750
256T	20	1750

[www.ittwwwalphen.com](http://www.ittwwwalphen.com)

*Engineered for life*

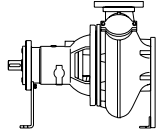


# ITT

## ROBOT PUMPS

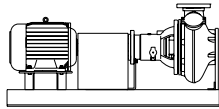
### Installation options

### BT4040



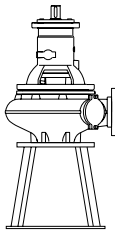
**H**

Horizontal installation:  
Bare shaft



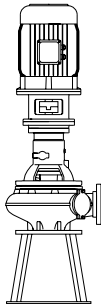
**HM**

Horizontal installation:  
With foundation plate  
and electric motor.



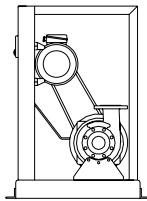
**V**

Vertical installation:  
Bare shaft



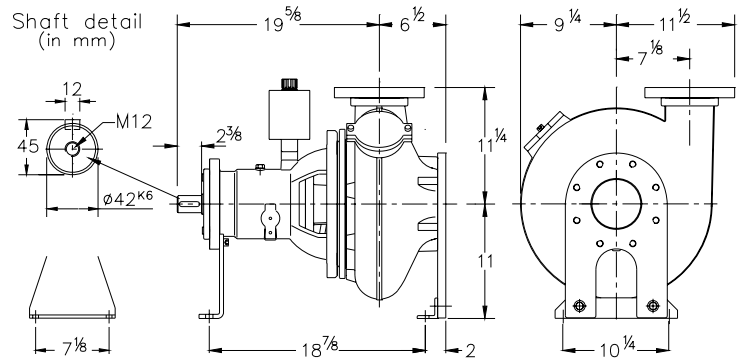
**VM**

Vertical installation:  
With support and electric  
motor.



**K**

V-belt driven:  
Frame construction.  
For motors NEMA  
145T - 324T.



#### Flange connections

		p.c.d.	Standard
Discharge	ND 4	7 $\frac{1}{2}$	ANSI 150
Suction	ND 5	8 $\frac{1}{2}$	Number x holes
			8x $\phi \frac{7}{8}$
			8x $\frac{3}{4}$ UNC

Weight (H version): 295 lbs

#### Optional:

- seal flushing

*Other options and materials upon request*

### Materials

sealhousing	: 1
pump casing	: 1
impeller	: 2
pump shaft	: 3 5
bearing housing	: 1
bolts	: 4 5
elastomer	: 8+9 10
seal lubrication	: oil
pump seal	: silicon carbide-silicon carbide
secondary seal	: carbon - ceramic
primer	: Alkyd primer
top coating	: Two component high-build polyurethane coating

1	cast iron	ASTM A-48 Cl.35
2	sg cast iron	ASTM A445 Gr.60-46-18
3	stainless steel	AISI 431
4	stainless steel	AISI 304
5	stainless steel	AISI 316
6	bronze	ASTM B 145 Gr. 4a
7	wear resistant sg iron	HB500
8	nitrile	(NBR)
9	neoprene	(CR)
10	viton	(FPM)

We reserve the right to alter specifications without prior notice.