



ITT

ROBOT PUMPS

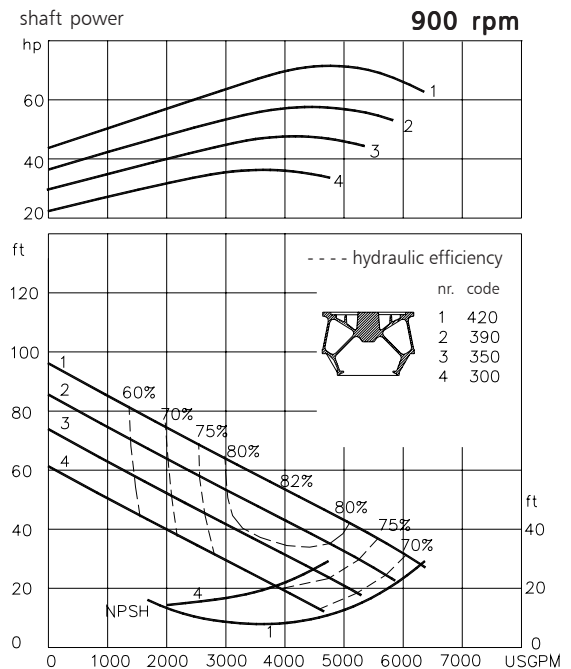
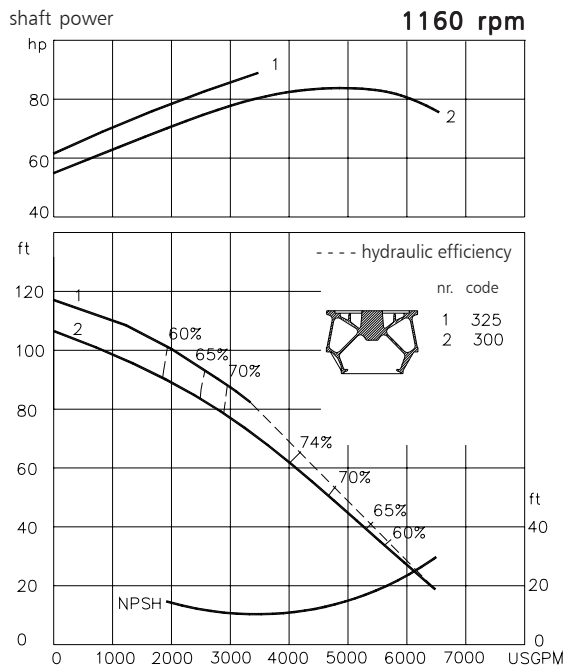
BT - Turbotex Pump

BT8040

BT pumps are designed to pump sewage and other kinds of waste water in many different applications. These pumps are equally suitable for clean water or lightly contaminated liquids. They are designed for a stationary dry installation of pump and motor.

solids passage : 4 1/4" x 5 1/4" **60 c/s**
 discharge flange : 12"
 suction flange : 10"
 impeller code : 420 - 300
 recommended minium flow : 588 USGPM

hydraulic characteristics in water at 68°F



Available electric motors		
Degree of protection IP55		
NEMA	[hp]	[rpm]
364T	30	900
365T	40	900
404T	50	900
405T	60	900
444T	75	900
445T	100	900
404T	60	1160
405T	75	1160
444T	100	1160

www.ittwwwalphen.com

Engineered for life

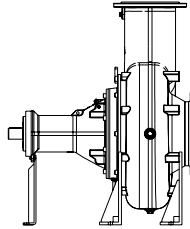


ITT

ROBOT PUMPS

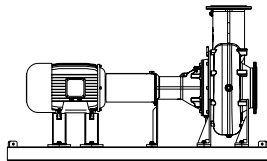
Installation options

BT8040



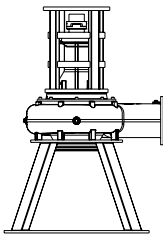
H

Horizontal bare shaft installation.



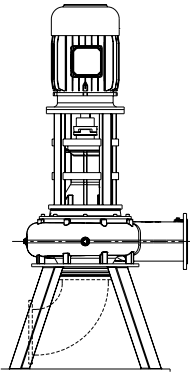
HM

Horizontal installation:
With foundation plate
and electric motor.



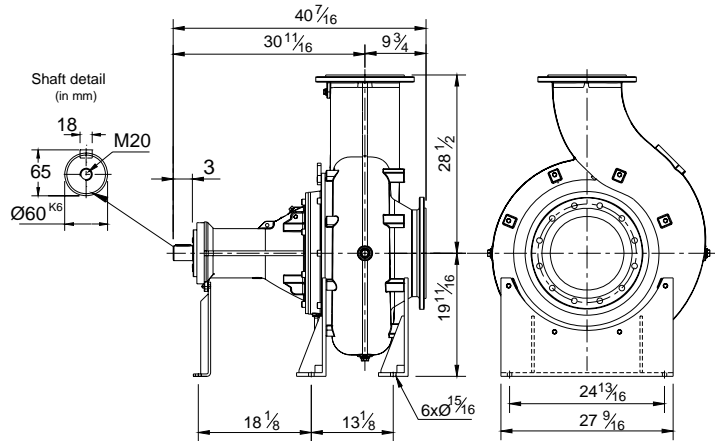
V

Vertical bare shaft installation.



VM

Vertical installation
with stand and electric
motor.



Flange connections

		p.c.d.	Standard ANSI 150 Number x holes
Discharge	ND 10	14 1/4	12 x Ø 1
Suction	ND 12	17	12 x Ø 1

Weight (H version): 1408 lbs

Optional:

- seal flushing

Other options and materials upon request

Materials

sealhousing	: 1
pump casing	: 1
impeller	: 2 6 7
pump shaft	: 3 5
bearing housing	: 1
bolts	: 4 5
elastomer	: 8+9 10
seal lubrication	: oil
pump seal	: silicon carbide-silicon carbide
secondary seal	: carbon - silicon carbide
primer	: Alkyd primer
top coating	: Two component high-build polyurethane coating

1	cast iron	ASTM A-48 Cl.35
2	sg cast iron	ASTM A445 Gr.60-46-18
3	stainless steel	AISI 431
4	stainless steel	AISI 304
5	stainless steel	AISI 316
6	bronze	ASTM B 145 Gr. 4a
7	wear resistant sg iron	HB500
8	nitrile	(NBR)
9	neoprene	(CR)
10	viton	(FPM)

We reserve the right to alter specifications without prior notice.