



ITT

ROBOT PUMPS

Channel pump

RC2202BG

50 Hz

The channel impeller pumps are designed to pump lightly contaminated waste water at high efficiencies. RC pumps are equipped with an open channel impeller running against an adjustable suction cover. Excellent for drainage or leakage water.

Pump

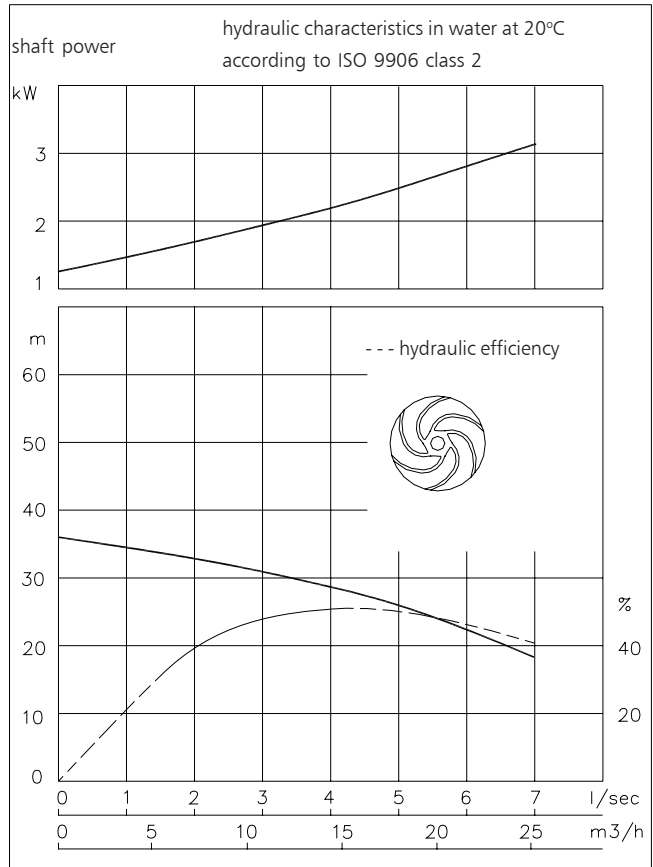
solids passage : 8 mm
 suction diameter : 8 mm screen
 discharge diameter : 40 mm
 impeller diameter : 156 mm
 recommended minimum flow : 0.5 l/s (2 m³/h)

Motor

rated shaft power : 3.1 kW
 rated electrical power : 3.9 kW
 mains : 50 Hz - 3 phase
 speed : 2900 rpm
 motor efficiency : 79 %
 rated power factor (cos phi) : 0.84
 degree of protection : IP 68
 isolation class : F (155 °C)
 max. water temperature : 40 °C
 (higher temp. on request)
 standard cable length : 10 m

Materials

motor housing : 1
 seal housing : 1
 volute : 1
 impeller : 1
 suction cover : 1
 shaft : 3 5
 bolts : 4 5
 elastomers : 8+9 10
 electrical cable : 9
 mechanical seals : oil lubricated
 pump seal : silicon carbide-silicon carbide
 motor seal : carbon-ceramic
 primer : Alkyd primer
 top coating : Two component high-build polyurethane coating



Pump curves are for cast iron only.

1	cast iron	EN-GJL-250
2	sg cast iron	EN-GJS-400-15
3	stainless steel 431	X20 CrNi 17 2
4	stainless steel 304	X5 CrNi 18 10
5	stainless steel 316	X5 CrNiMo 17 12 2
6	stainless steel 329	X4 CrNiMoN 27 5 2
7	wear resistant sg iron	HB 500
8	nitrile	(NBR)
9	neoprene	(CR)
10	viton	(FPM)

www.ittwalphen.com

Engineered for life

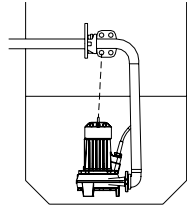


ITT

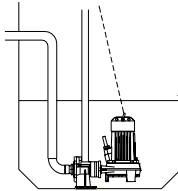
ROBOT PUMPS

Installation options

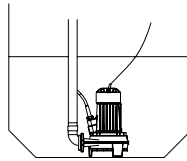
RC2202BG



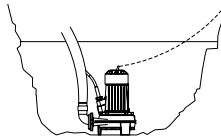
H
Header coupling:
Type HK50



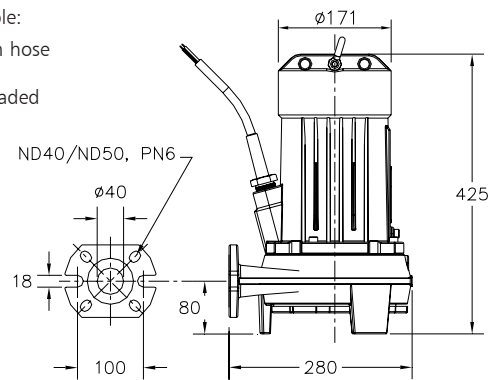
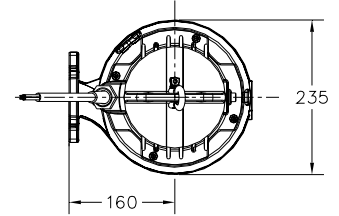
V
Guide bar coupling:
Type V50



F
Freestanding:
With 50mm hose
adapter
or R2" threaded
connection



T
Transportable:
With 50mm hose
adapter
or R2" threaded
connection



The motor is cooled by the surrounding water.

Version

B Basic

Weight

47 kg

Optional:

Thermostiches in motorwindings.

Flexible protective sheating for cable
(AISI 316)

Water detector in motor and oil housing

Motor connection details

voltage [V]*	rated current[A]	number of cables x number of cores x cross section [mm²]			
		DOL-start	YD-start	with waterdetector and/or thermostiches	
				DOL-start	YD-start
220	12.3	1x4x1.5	1x7x1.5	1x7x1.5	1x10x1.5
380	7.1	1x4x1.5	1x7x1.5	1x7x1.5	1x10x1.5
400	6.7	1x4x1.5	1x7x1.5	1x7x1.5	1x10x1.5
415	6.5	1x4x1.5	1x7x1.5	1x7x1.5	1x10x1.5
500	5.4	1x4x1.5	1x7x1.5	1x7x1.5	1x10x1.5

starting current DOL- start : 7.9 x rated current

starting current YD- start : 2.6 x rated current

* other voltages on request

We reserve the right to alter specifications without prior notice.