



# ITT

## ROBOT PUMPS

### Channel pump

### RC2202BH

### 50 Hz

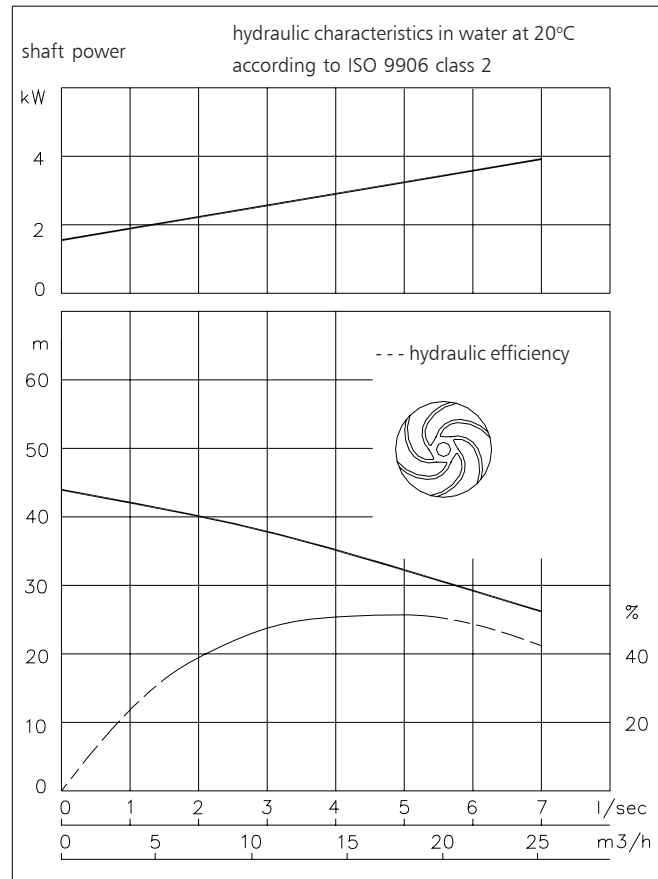
The channel impeller pumps are designed to pump lightly contaminated waste water at high efficiencies. RC pumps are equipped with an open channel impeller running against an adjustable suction cover. Excellent for drainage or leakage water.

#### Pump

solids passage : 8 mm  
 suction diameter : 8 mm screen  
 discharge diameter : 40 mm  
 impeller diameter : 168 mm  
 recommended minimum flow : 0.5 l/s (2 m<sup>3</sup>/h)

#### Motor

rated shaft power : 4.0 kW  
 rated electrical power : 5.0 kW  
 mains : 50 Hz - 3 phase  
 speed : 2900 rpm  
 motor efficiency : 80 %  
 rated power factor (cos phi) : 0.85  
 degree of protection : IP 68  
 isolation class : F (155 °C)  
 max. water temperature : 40 °C  
 (higher temp. on request)  
 standard cable length : 10 m



Pump curves are for cast iron only.

#### Materials

motor housing : 1  
 seal housing : 1  
 volute : 1  
 impeller : 1  
 suction cover : 1  
 shaft : 3 5  
 bolts : 4 5  
 elastomers : 8+9 10  
 electrical cable : 9  
 mechanical seals : oil lubricated  
 pump seal : silicon carbide-silicon carbide  
 motor seal : carbon-ceramic  
 primer : Alkyd primer  
 top coating : Two component high-build polyurethane coating

1	cast iron	EN-GJL-250
2	sg cast iron	EN-GJS-400-15
3	stainless steel 431	X20 CrNi 17 2
4	stainless steel 304	X5 CrNi 18 10
5	stainless steel 316	X5 CrNiMo 17 12 2
6	stainless steel 329	X4 CrNiMoN 27 5 2
7	wear resistant sg iron	HB 500
8	nitrile	(NBR)
9	neoprene	(CR)
10	viton	(FPM)

[www.ittwalphen.com](http://www.ittwalphen.com)

*Engineered for life*

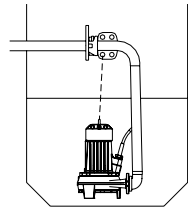


# ITT

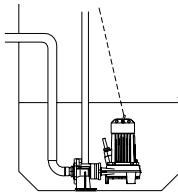
## ROBOT PUMPS

### Installation options

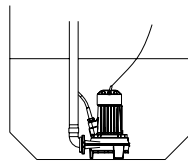
### RC2202BH



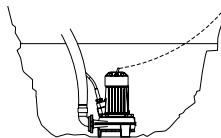
**H**  
Header coupling:  
Type HK50



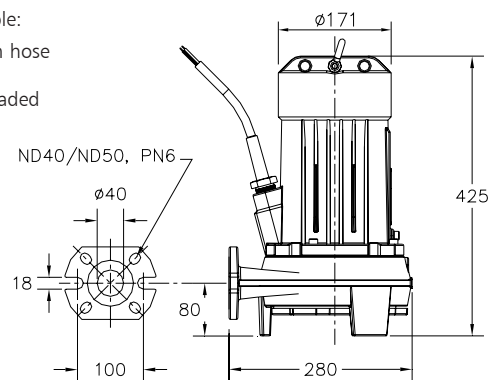
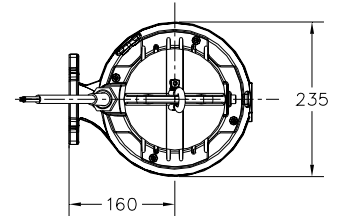
**V**  
Guide bar coupling:  
Type V50



**F**  
Freestanding:  
With 50mm hose  
adapter  
or R2" threaded  
connection



**T**  
Transportable:  
With 50mm hose  
adapter  
or R2" threaded  
connection



The motor is cooled by the surrounding water.

#### Version

#### Weight

**B Basic**

47 kg

#### Optional:

**Thermoswitches** in motorwindings.

**Flexible protective sheating for cable**  
(AISI 316)

**Water detector** in motor and oil housing

### Motor connection details

voltage [V]*	current [A]	number of cables x number of cores x cross section [mm <sup>2</sup> ]			
				with waterdetector and / or thermoswitches	
		DOL-start	YD-start	DOL-start	YD-start
220	15.4	1x4x1.5	1x7x1.5	1x7x1.5	1x10x1.5
380	8.9	1x4x1.5	1x7x1.5	1x7x1.5	1x10x1.5
400	8.5	1x4x1.5	1x7x1.5	1x7x1.5	1x10x1.5
415	8.2	1x4x1.5	1x7x1.5	1x7x1.5	1x10x1.5
500	6.8	1x4x1.5	1x7x1.5	1x7x1.5	1x10x1.5

starting current DOL-start : 6.2 x rated current

\* other voltages on request

starting current YD-start : 2.1 x rated current

We reserve the right to alter specifications without prior notice.