



# ITT

## ROBOT PUMPS

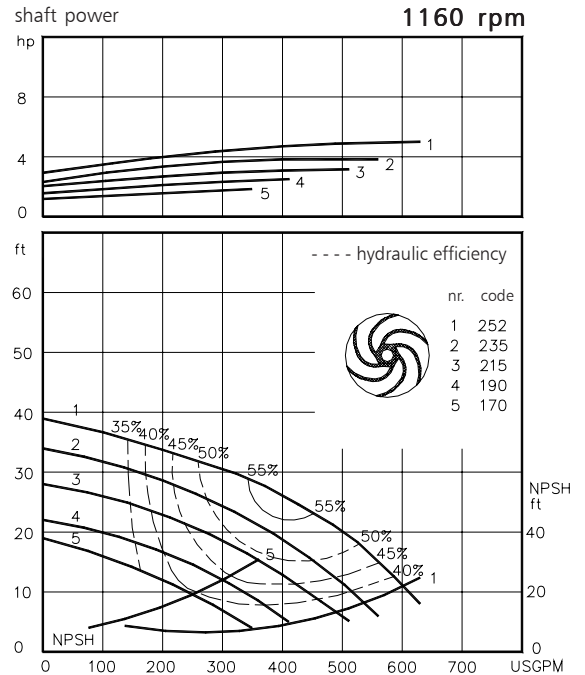
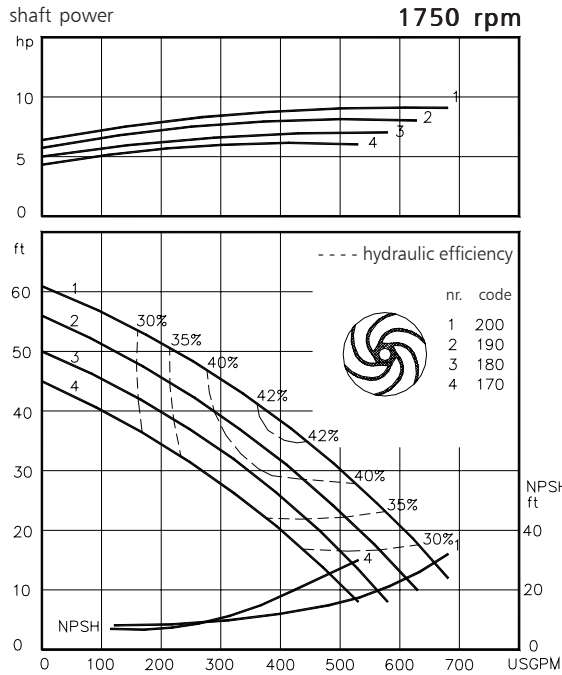
### Dry installed stainless steel vortex pump

### BW2030

The dry installed stainless steel vortex pumps are designed to pump a wide variety of solids contaminated liquids. They are used for sewage and other waste water applications. The pump can be used in aggressive applications pH = 1-13. Standard elastomers are in FPM (Viton).

solids passage : 3" **60 c/s**  
 discharge flange : 4"  
 suction flange : 4"  
 impeller code : 252-170  
 recommended minium flow : 95 USGPM

hydraulic characteristics in water at 68°F



Available electric motors		
Degree of protection IP55		
NEMA	[hp]	[rpm]
184T	2.0	1160
213T	3.0	1160
215T	5.0	1160
184T	5.0	1750
213T	7.5	1750
215T	10	1750

[www.ittwalphen.com](http://www.ittwalphen.com)

*Engineered for life*



# ITT

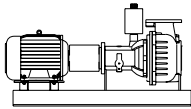
## ROBOT PUMPS

### Installation options

### BW2030

**H**

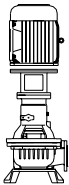
Horizontal installation:  
Bare shaft

**HM**

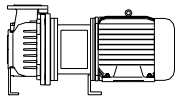
Horizontal installation:  
With foundation plate  
and electric motor.

**V**

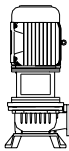
Vertical installation:  
Bare shaft

**VM**

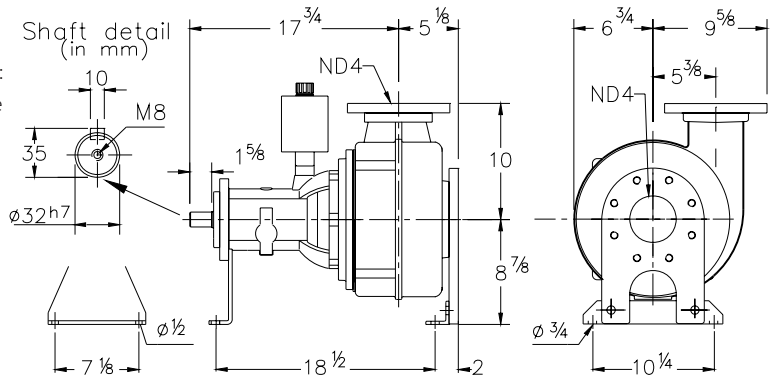
Vertical installation:  
With support and electric  
motor.

**HS**

Short coupled:  
Horizontal installation.

**VS**

Short coupled:  
Vertical installation.

**Flange connections**

Standard

ANSI 150

Number x holes

Discharge	ND 4	7 1/2
Suction	ND 4	7 1/2

8 x $\varnothing$ 3/4
8 x 5/8 UNC

Weight (H version): 198 lbs

**Optional:****- seal flushing***Other options and materials upon request*

### Materials

sealhousing	: 5
pump casing	: 5
impeller	: 5 6
pump shaft	: 5
bearing housing	: 1
bolts	: 4+5
elastomer	: 10
seal lubrication	: oil
pump seal	: silicon carbide-silicon carbide
secondary seal	: 1 radial lipseal
primer	: Alkyd primer
top coating	: Two component high-build polyurethane coating

1	cast iron	ASTM A-48 Cl.35
2	sg cast iron	ASTM A445 Gr.60-46-18
3	stainless steel	AISI 431
4	stainless steel	AISI 304
5	stainless steel	AISI 316
6	stainless steel	AISI 329
7	wear resistant sg iron	HB500
8	nitrile	(NBR)
9	neoprene	(CR)
10	viton	(FPM)

We reserve the right to alter specifications without prior notice.